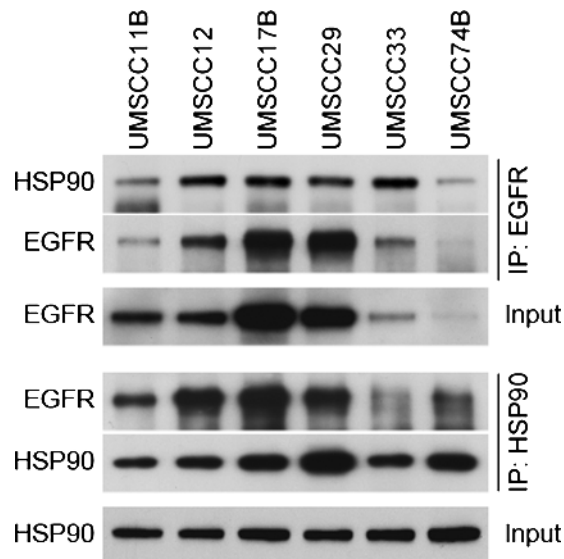


**Figure W1.** Effect of ammonium molybdate on the interaction of mature WT-EGFR with HSP90. The effect of ammonium molybdate on the interaction between WT-EGFR and HSP90 was assessed by IP as shown in Figure 1A. The full-length immunoblot shows an increase in the interaction between mature EGFR (~170 kDa) with HSP90 with increasing concentrations of ammonium molybdate.



**Figure W2.** Specificity of immunoadsorption of EGFR and HSP90. The specificity of antibody and the interaction between EGFR and HSP90 were confirmed by IP of EGFR or HSP90 followed by immunoblot analysis of HSP90 or EGFR, in six HNSCC cell lines. Both approaches yielded relatively similar results, indicating the specificity of protein-protein interaction.