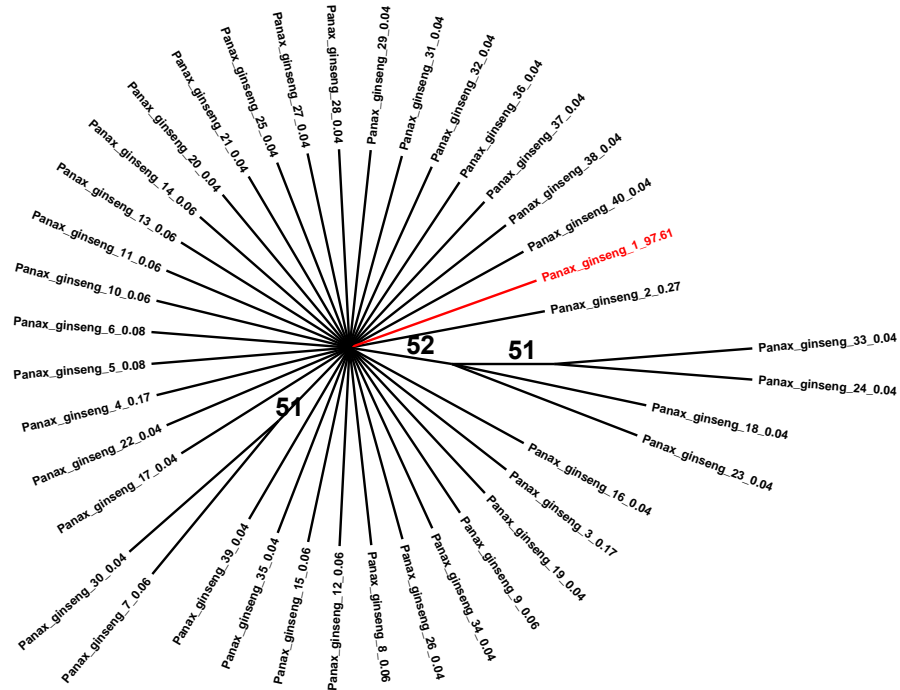


Hi wt'U50 Unrooted Maximum Parsimony trees displaying the evolutionary mechanisms of intra-genomic ITS2 variants in plant genomes. ***C+**The concerted evolution mechanism. *Panax ginseng* is used as an example. The red line indicates the most major variant. ***D+**The birth-and-death evolution mechanism. *Arabidopsis thaliana* is used as an example. The red lines indicate the two main variant clusters. ***E+**The divergent evolution mechanism. *Solanum lyratum* is used as an example. The red lines indicate multiple clusters of variants.

Hi wt'U5A.



Hi wt'U5B.

