

Figure S4. Two identical variants of ITS2 in the genera *Panax* and *Eleutherococcus* of Araliaceae. **(A)** The Maximum Parsimony (MP) tree of ITS2 in Araliaceae. One minor variant of ITS2 in *Eleutherococcus giraldii* showed close affinity to the ITS2 variants of *Panax ginseng* and was clustered with them. **(B)** This ITS2 variant, which was the major variant in the *Panax ginseng* genome but minor in *Eleutherococcus giraldii*, was confirmed by direct sequencing of PCR products using specific primers. The sequencing trace from *E. giraldii* shows double peaks at some bases, and these double peaks correspond to the major ITS2 variant in *P. ginseng*. The bases having double peaks are boxed in red.

Figure S4A.

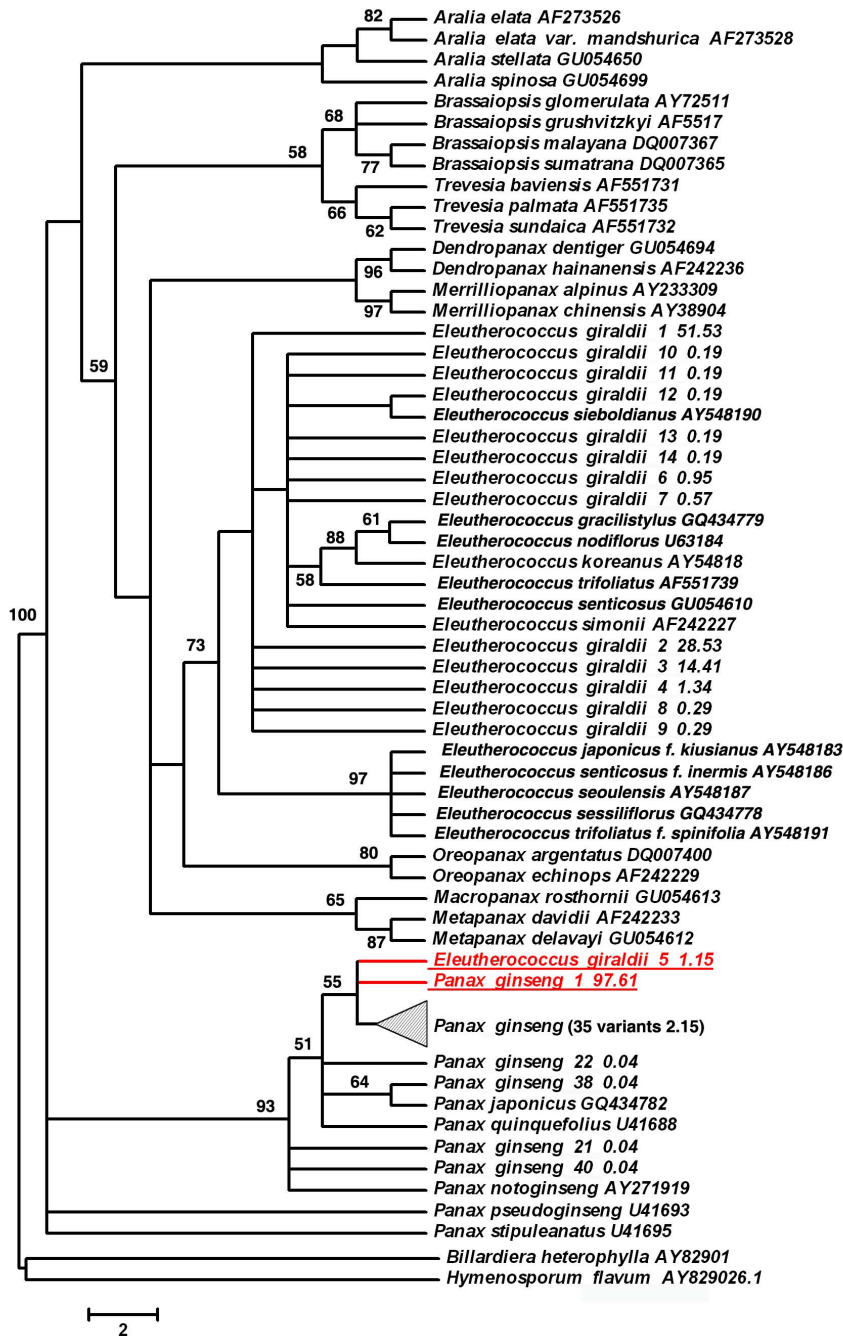


Figure S4B.

