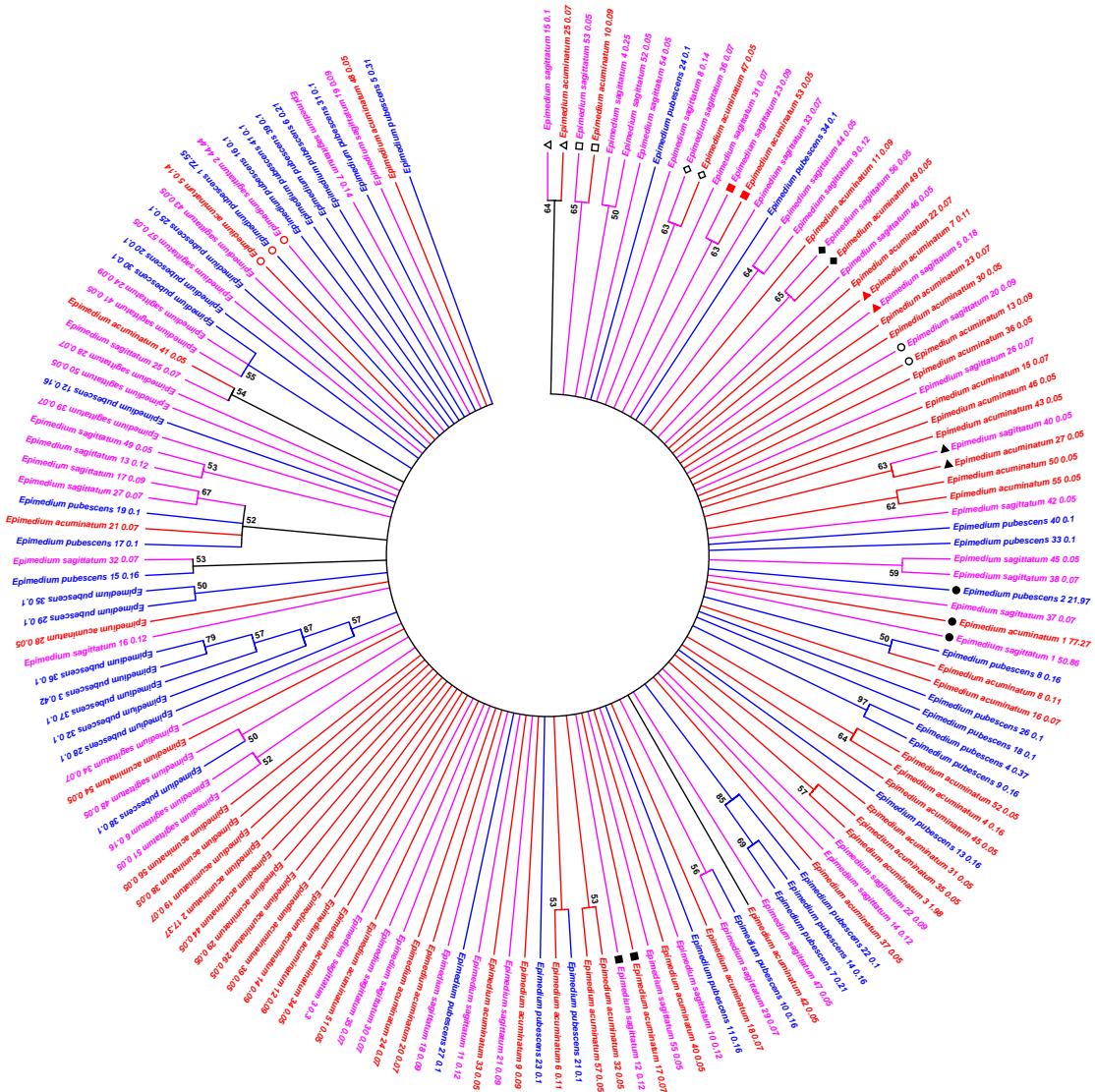


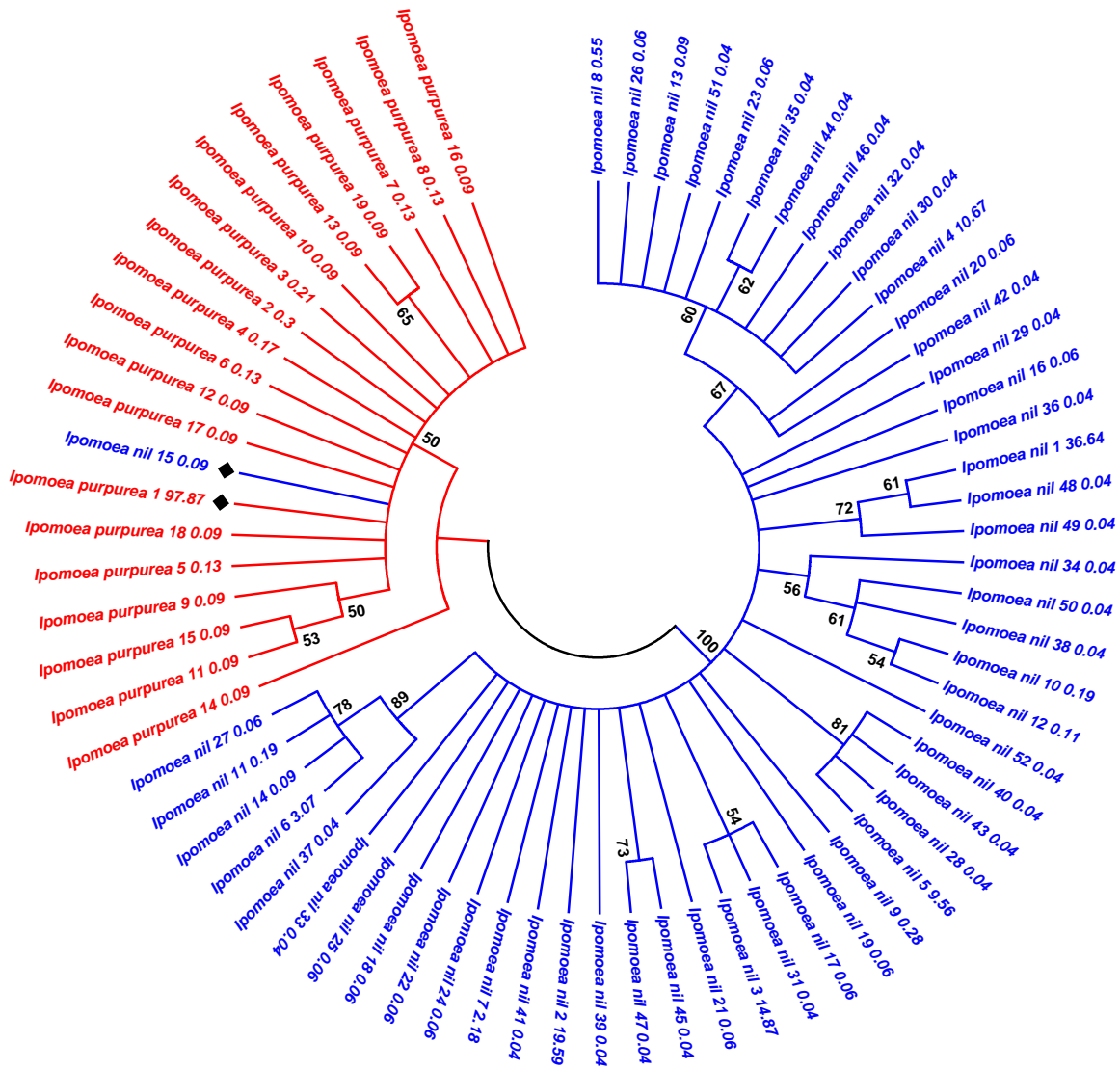
Hi wt g'U9. The Neighbor-Joining and the Maximum Parsimony trees of ITS2 variants indicated that genetic information from the common ancestor was maintained in the genomes of descendants. The same colors represent the same species. The same shade and color of symbols show the variants with 100% identity. The Latin names of species are followed by the rank and RVA of the variants. **(A,B)** *Epimedium* (Berberidaceae). **(C,D)** *Inula* (Asteraceae). **(E,F)** *Ipomoea* (Convolvulaceae). **(G,H)** *Panax* (Araliaceae). **(I,J)** *Pinus* (Pinaceae).

Hi wt g'U9A.

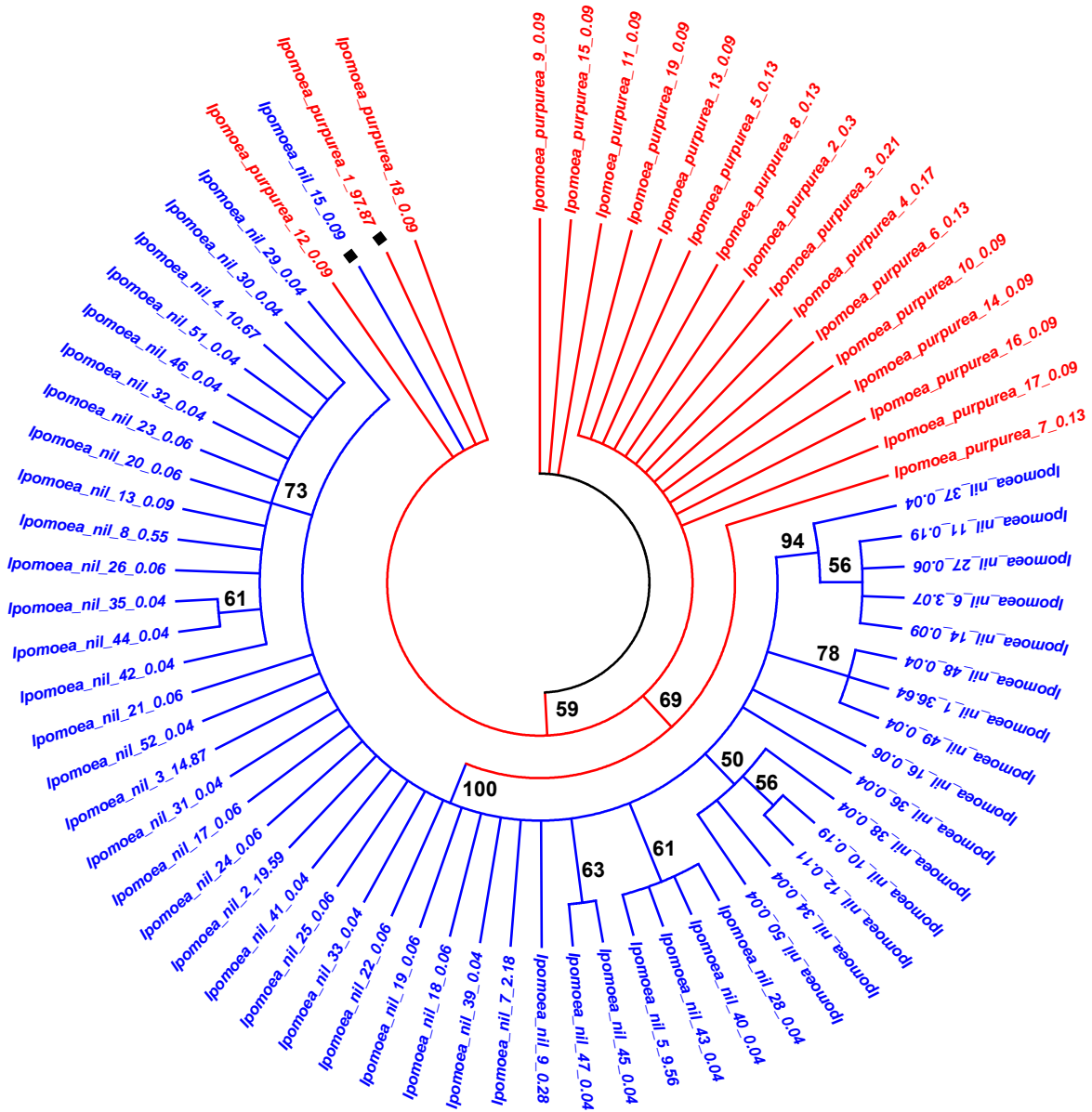




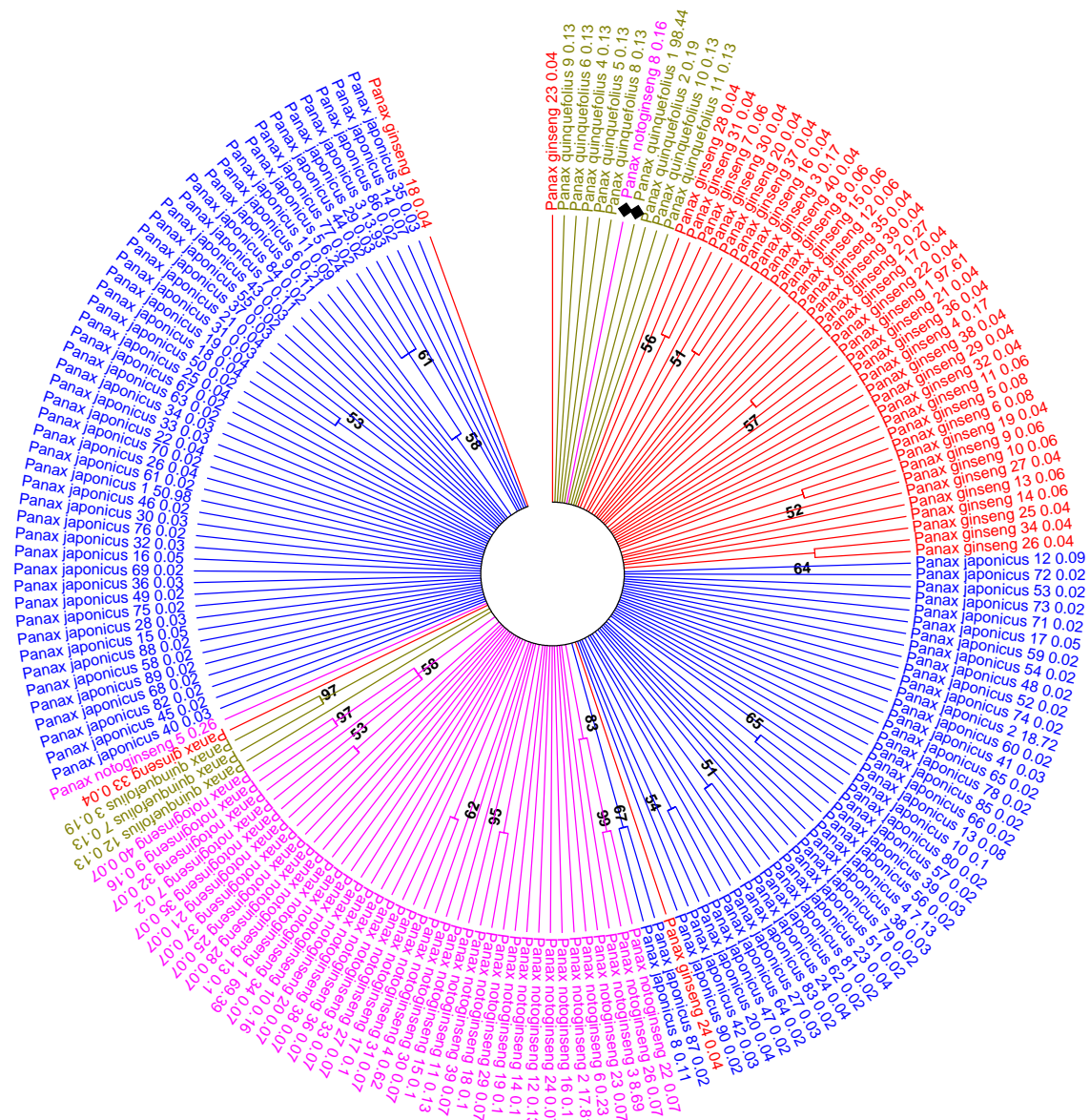
Hi wt'U9E.



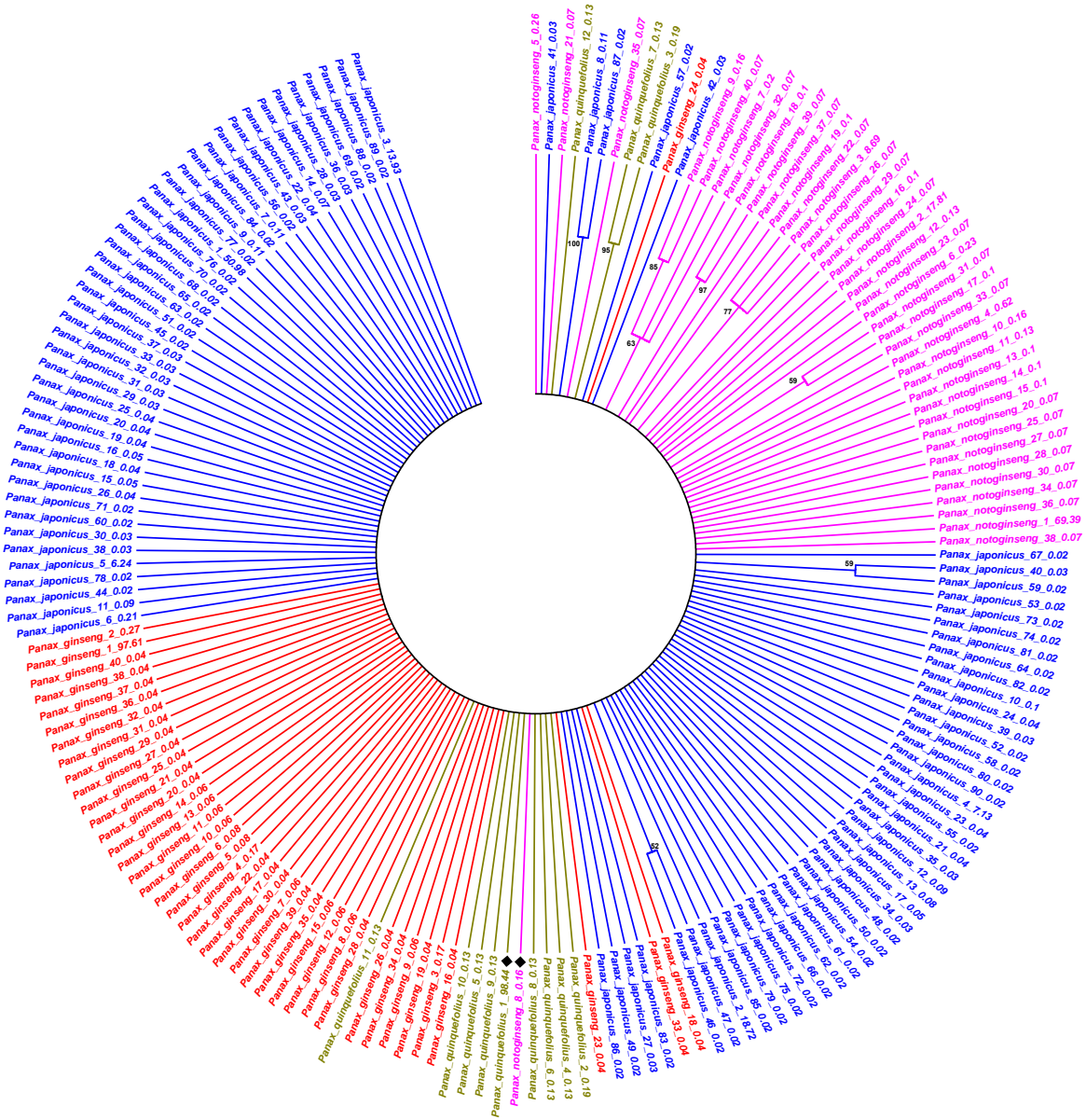
Hli wtg'UF.



Hi wt'UG.



Hli wtg'UDH.



Hi wt'U9I.

