

Figure 1. The Neighbor-Joining tree of ITS2 variants in the genera **(A)** *Astragalus* (Fabaceae), **(B)** *Clerodendrum* (Verbenaceae), and **(C)** *Euphorbia* (Euphorbiaceae). The same colors represent the same species. The Latin names of species are followed by the rank and RVA of the variants.

Figure 1; A.

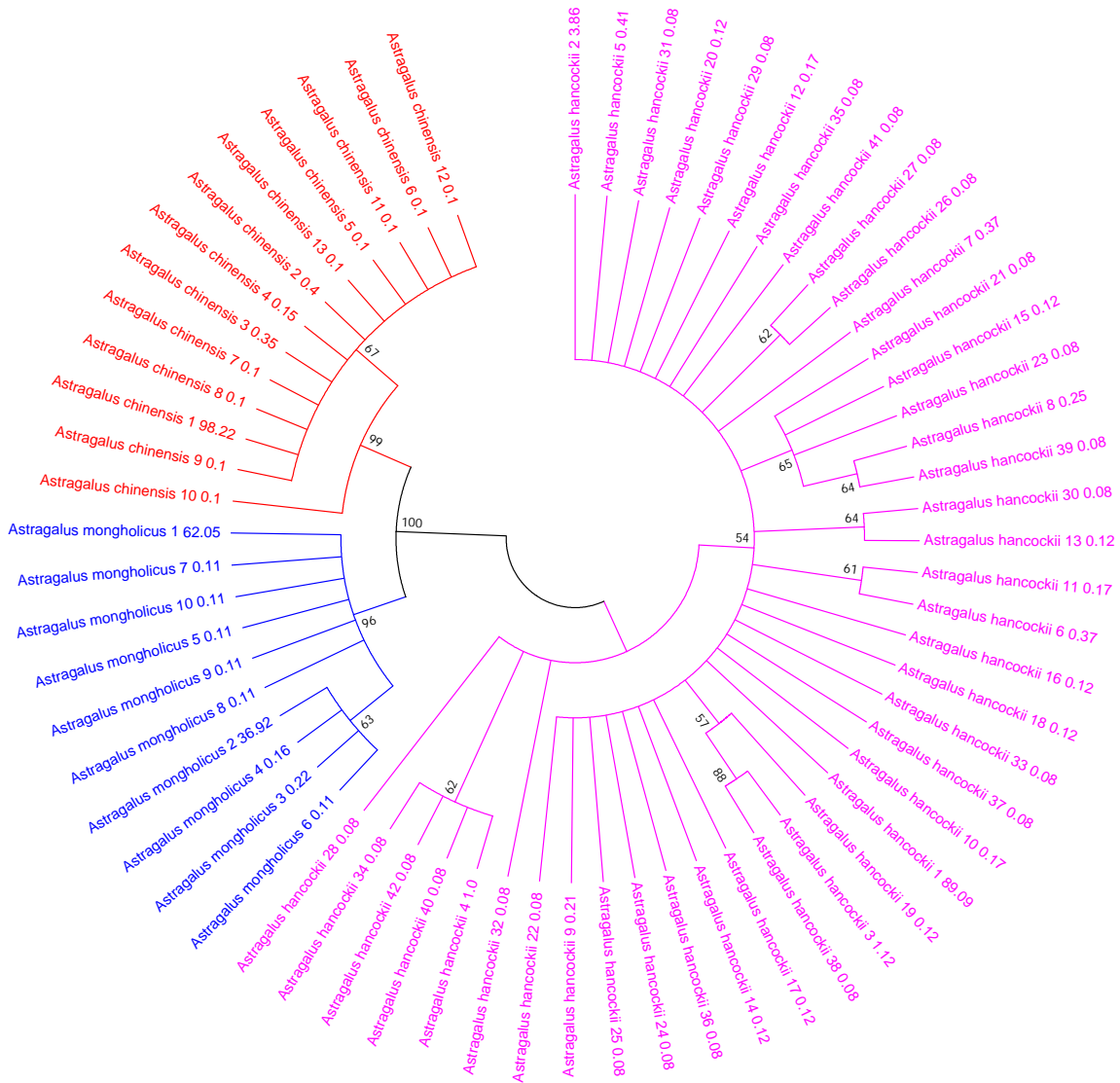


Figure S9C.

