

Figure S1 Fry and Plk1 colocalize to spindle poles during the early mitotic phase. HeLa cells were fixed and stained with anti-Plk1 (green) and anti-Fry (red) antibodies. DNA was stained with DAPI (blue). Bar, 10 μ m.

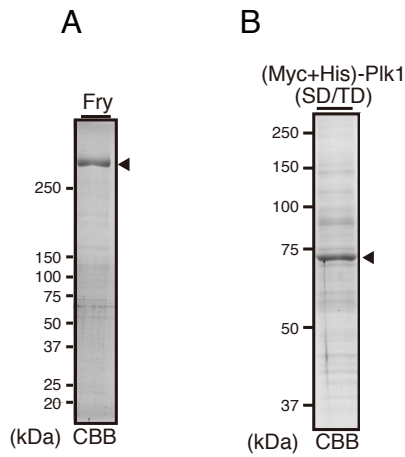


Figure S2 Purification of Recombinant Fry and (Myc+His)-tagged Plk1(S137D/T210D). (A) Purification of recombinant Fry. GST-Fry was expressed in Sf21 cells by baculovirus and purified with glutathione-Sepharose beads. The bound GST-Fry was exposed to prescission protease and eluted. The purified protein was analyzed by SDS-PAGE and stained with CBB. (B) Purification of (Myc+His)-Plk1(S137D/T210D). (Myc+His)-Plk1(SD/TD) was expressed in Sf21 cells, purified with nickel agarose and analyzed by SDS-PAGE and CBB staining.