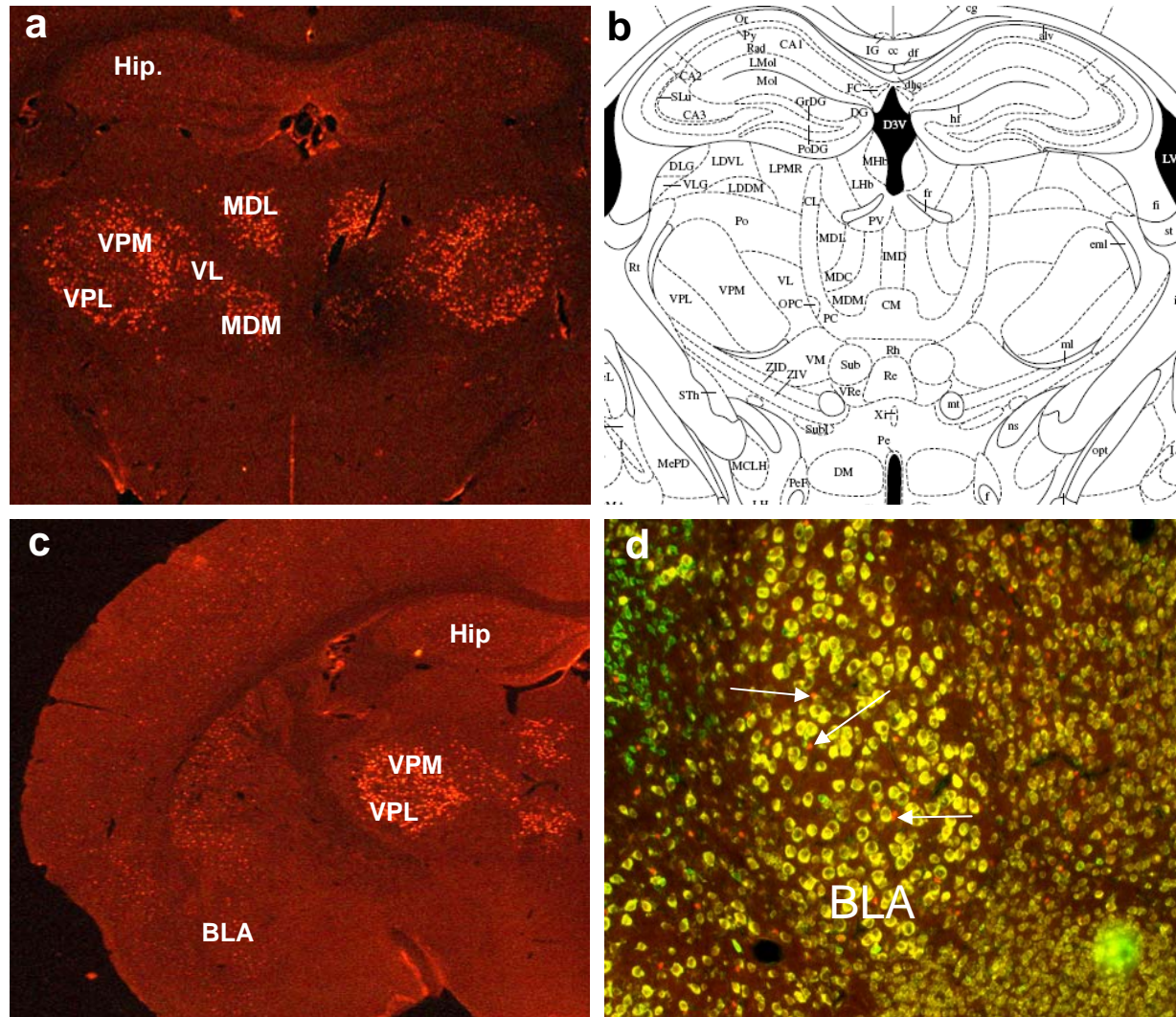


Supplemental Figure 1



Supplemental Figure 1. Identification of NR2C localization by β -Gal staining in NR2C +/- mice reveals high expression of NR2C in thalamic nuclei and minimal expression in the amygdala. Coronal sections show strong expression of NR2C in (a) mediodorsal lateral (MDL), mediodorsal medial (MDM), ventrolateral (VL), ventral posterolateral (VPL) and ventral posteromedial (VPM) thalamic nuclei. (b) Reference figure showing localization at Bregma -1.70 mm, interaural 2.10 mm from G. Paxinos *The Mouse Brain in Stereotaxic Coordinates*, 2nd Edition Academic Press. (c) Coronal section shows strong expression of NR2C in ventral posterolateral (VPL) and ventral posteromedial (VPM) thalamic nuclei and minimal expression of NR2C in basolateral amygdala (BLA). (d) Co-localization labeling with NeuN shows expression of NR2C in the basolateral amygdala (BLA) but does not co-localize with neuronal marker. Other abbreviations; hippocampus (Hip).