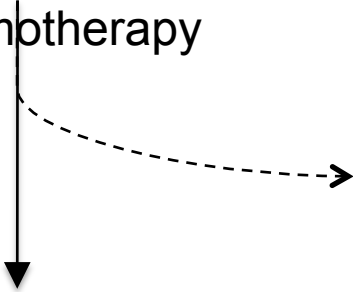


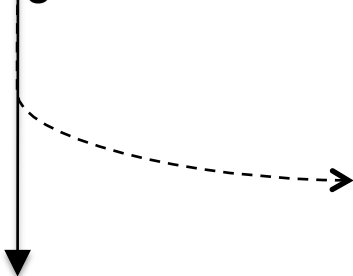
Supplementary Figure 1

68 primary breast cancers with core biopsy taken at 24 hours post chemotherapy



Excluded - not assessable for RAD51
11 no proliferation in sections

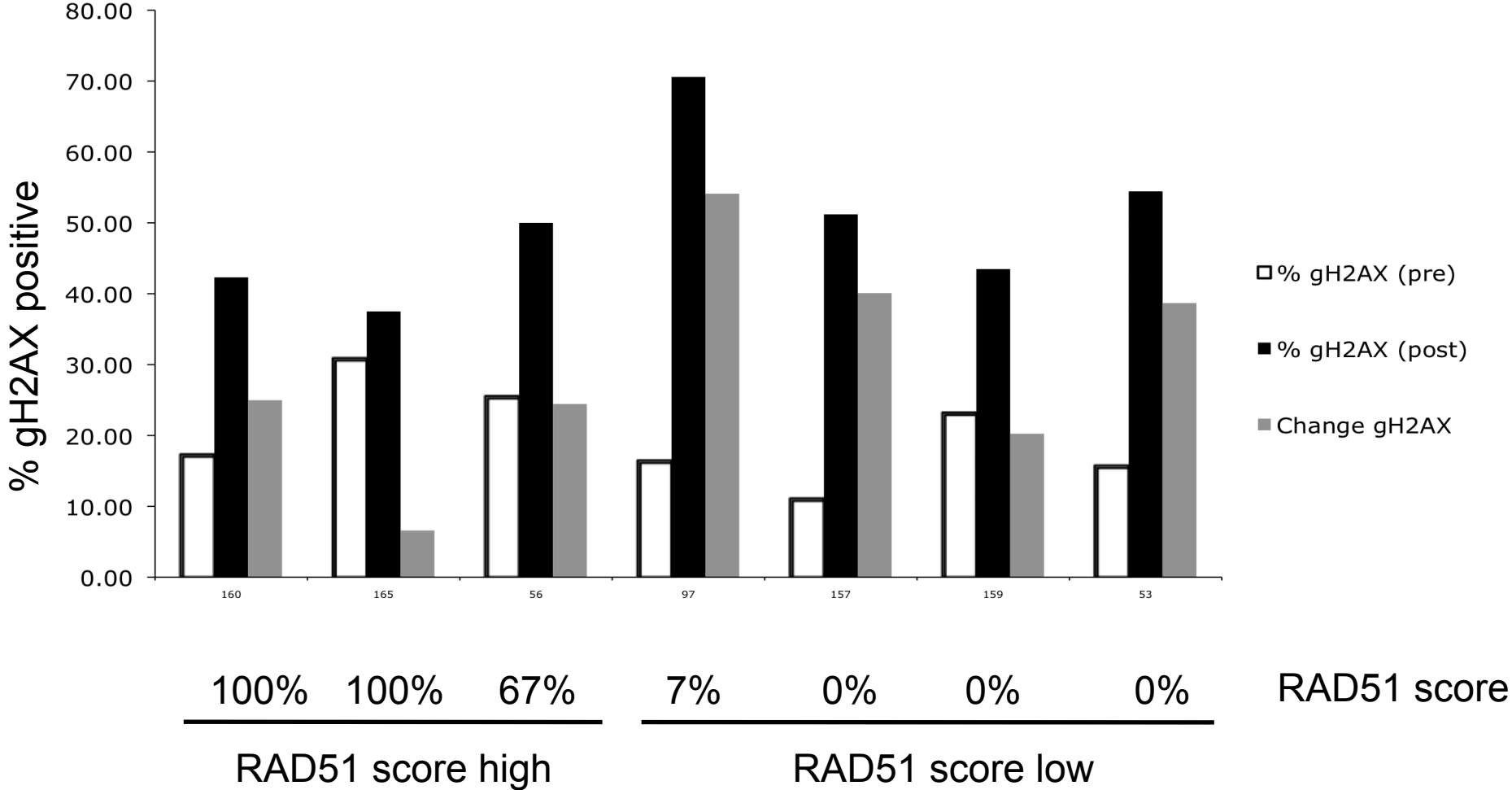
57 cancers assessed for RAD51/geminin



Excluded - no pathCR information
8 Radiotherapy following neoadjuvant chemotherapy with no surgery
1 Lost to followup

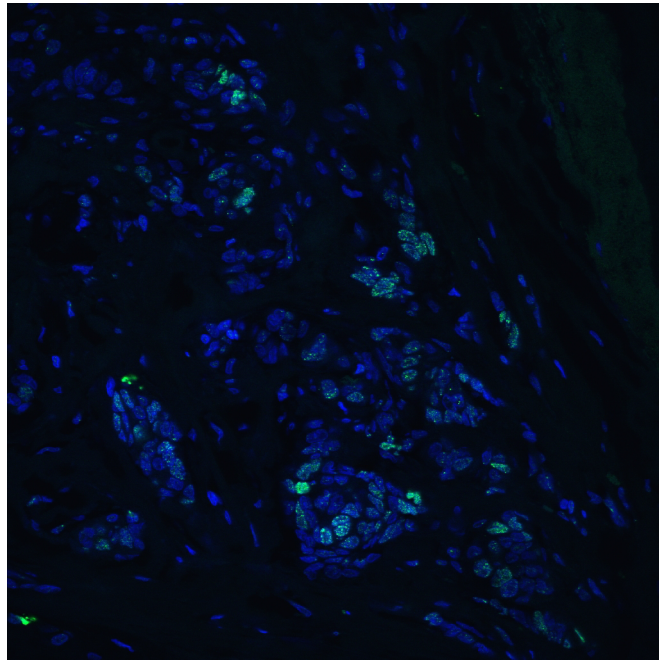
48 cancers assessed for correlation between RAD51 score and pathCR

Supplementary Figure 2

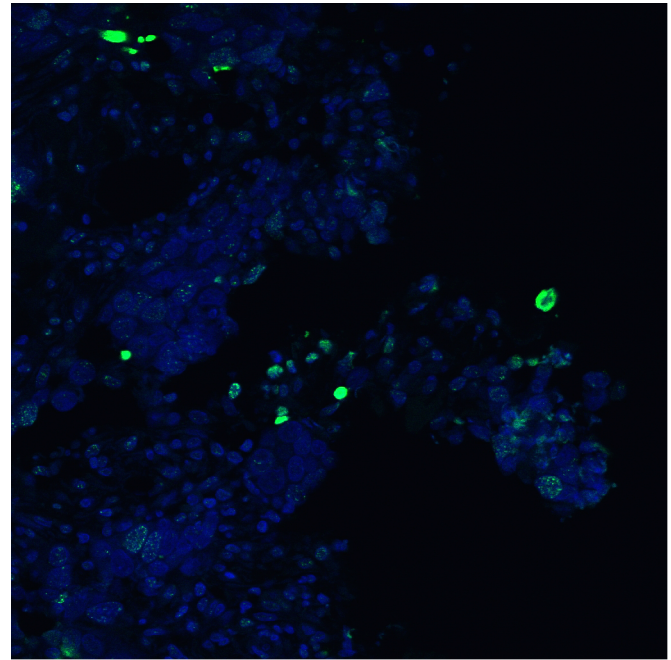


Supplementary Figure 3

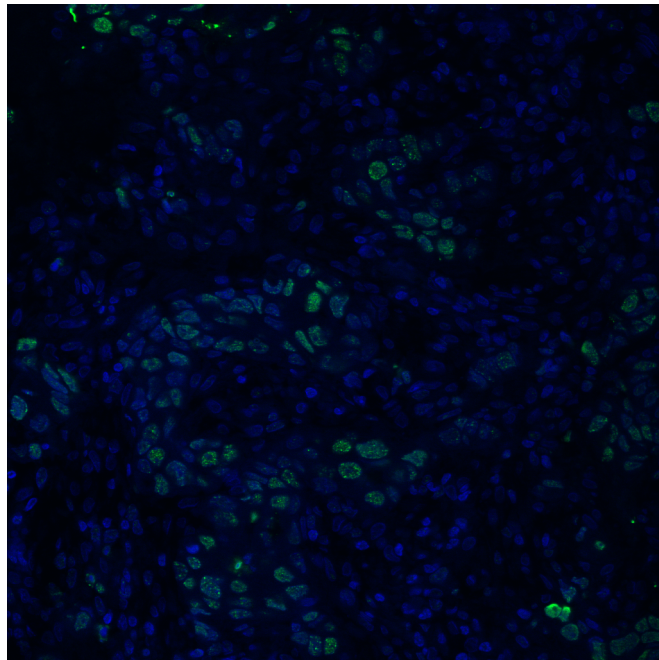
A



B



C



D

