

SUPPLEMENTARY FIGURES

N-terminal deletion does not affect α -synuclein membrane binding, self-association and toxicity in human neuroblastoma cells, unlike yeast

Katherina Vamvaca, Peter T. Lansbury Jr. & Leonidas Stefanis

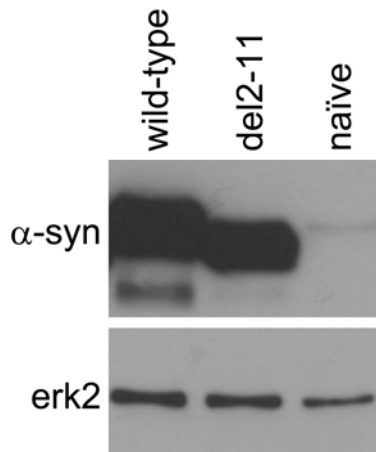


Fig. S1. Wild-type and del2-11 α -syn levels in polyclonal SHSY-5Y cells are about 30-fold higher than endogenous α -syn levels in naïve cells. Erk2 serves as a loading control.

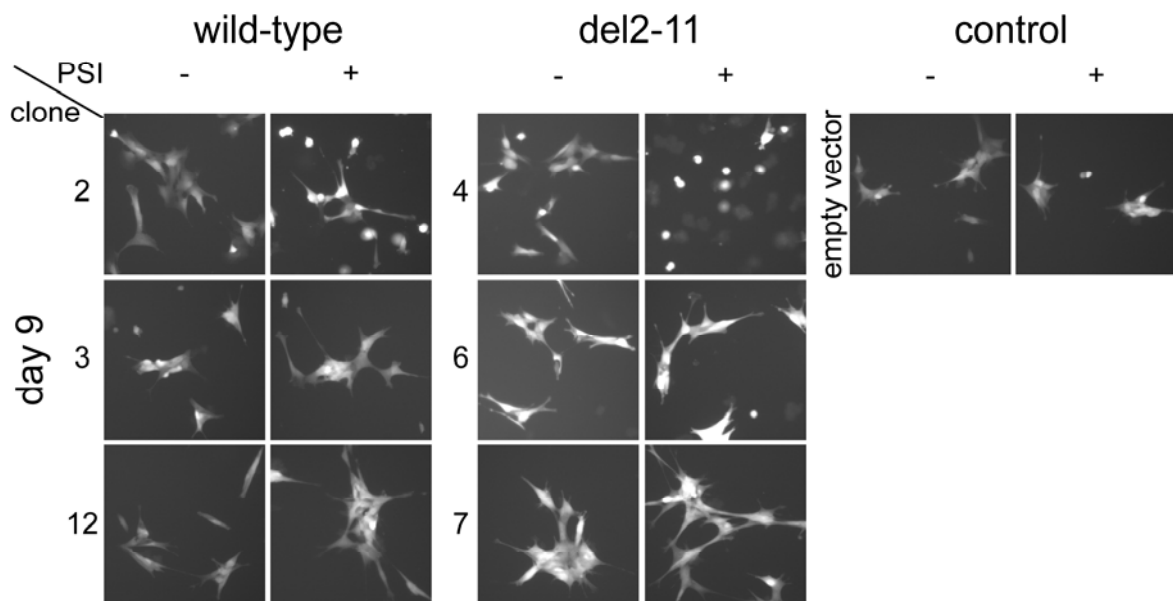


Fig. S2. Fluorescence microscopy images of wild-type, del2-11 and empty-vector control clones, after a 9-day RA-treatment, in the absence and presence of PSI (added on day 5).