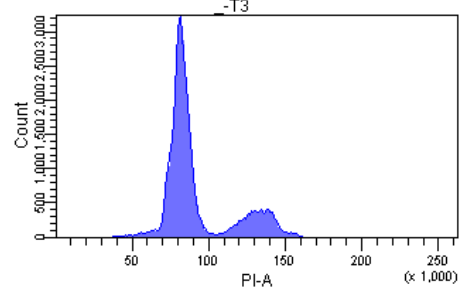
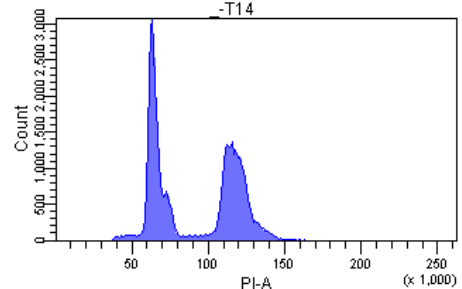


(A) Flow cytometry data for HeLa synchronization experiment with the unlabeled histone data using a double thymidine block. (B-D) Flow cytometry data for HeLa synchronization experiment using a double thymidine block for the heavy methyl experiments. (E) Flow cytometry data for HeLa synchronization experiment using a thymidine/nocodazole block for the heavy methyl experiments. (F) Flow cytometry data for HeLa synchronization experiment using a thymidine/nocodazole block for the qRT-PCR analysis. (G) Flow cytometry data for HeLa synchronization experiment for microarray experiments.

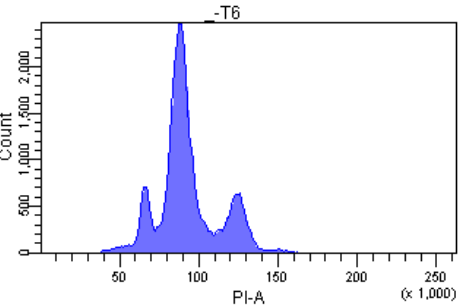
(B) Double thymidine; t = 3 hr



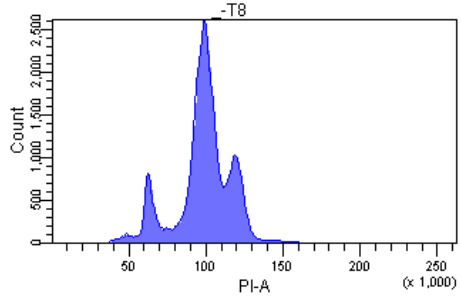
Double thymidine; t = 14 hr



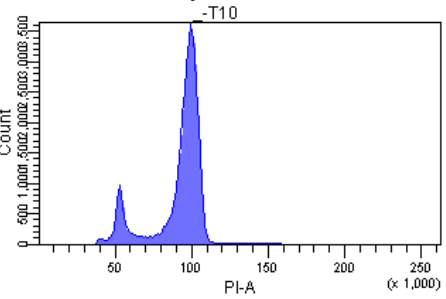
Double thymidine; t = 6 hr



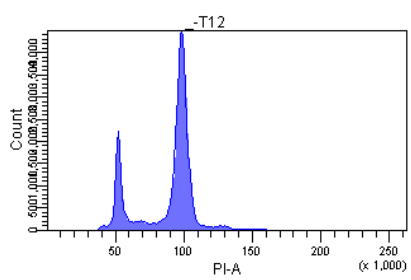
Double thymidine; t = 8 hr

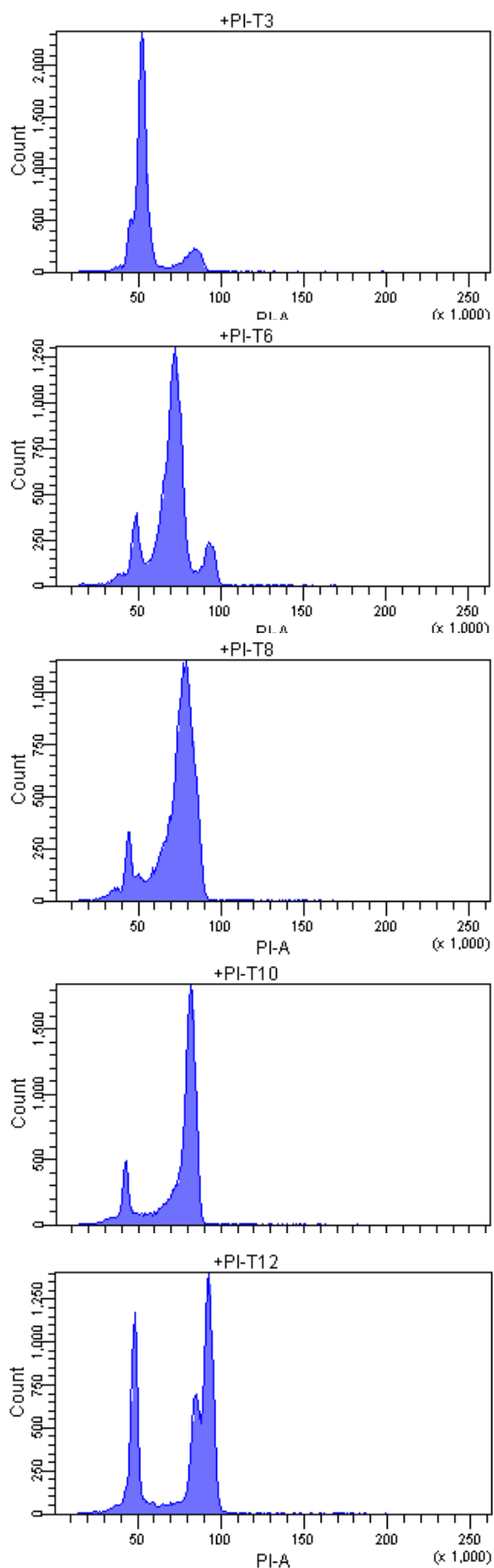
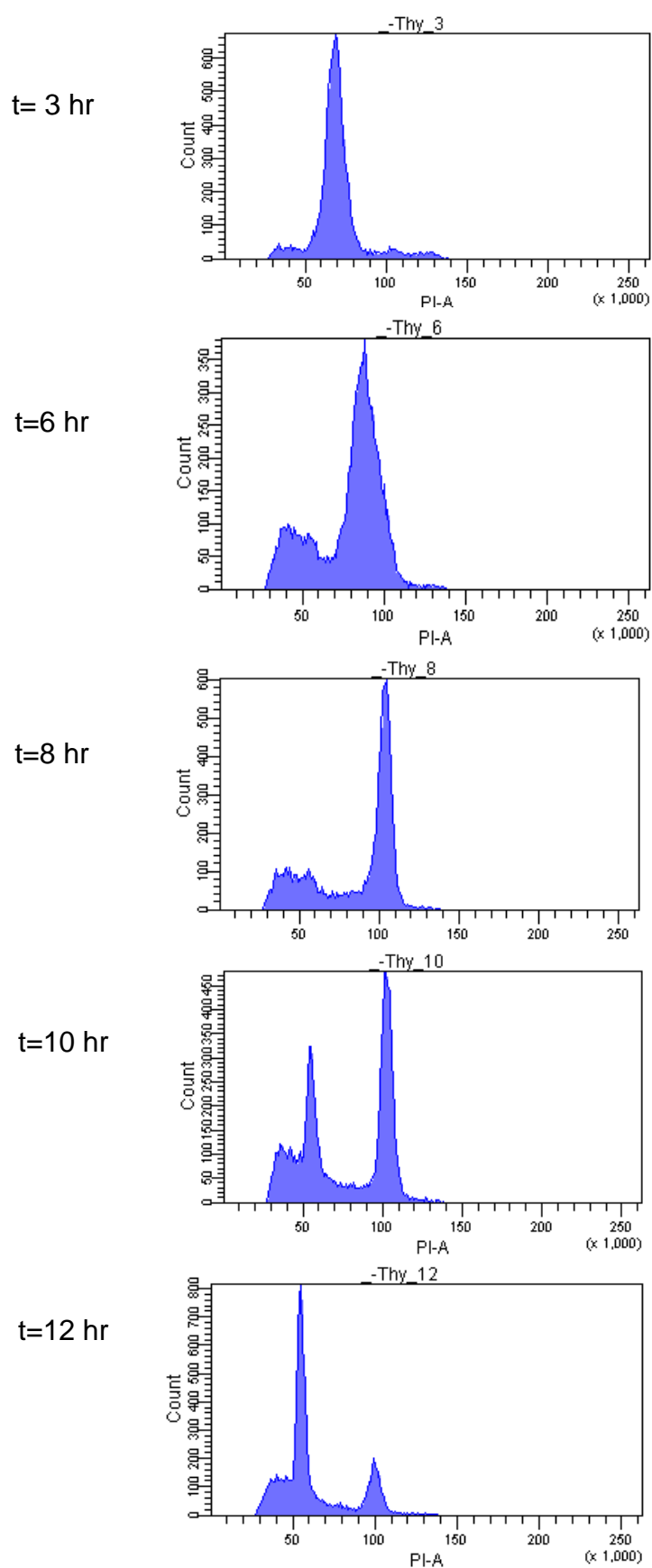


Double thymidine; t = 10 hr

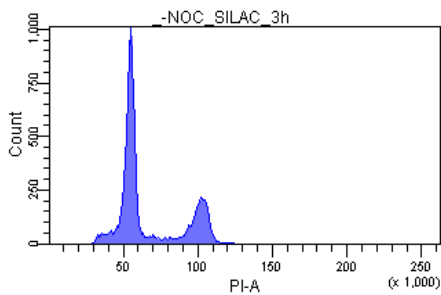
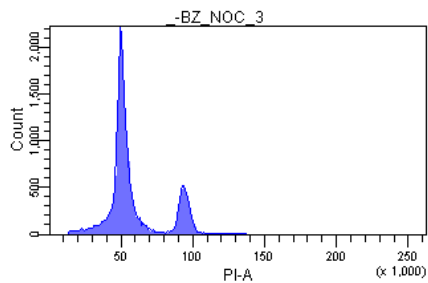


Double thymidine; t = 12 hr

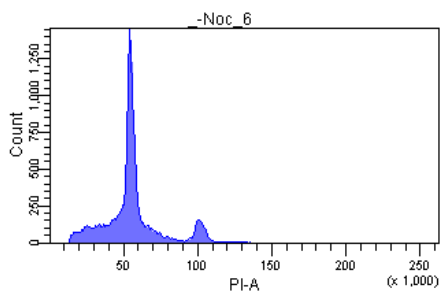
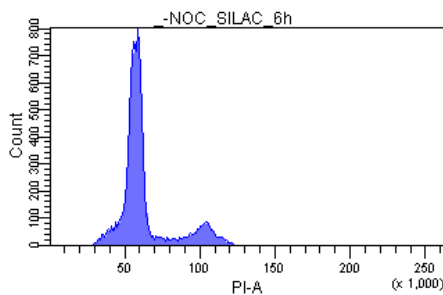
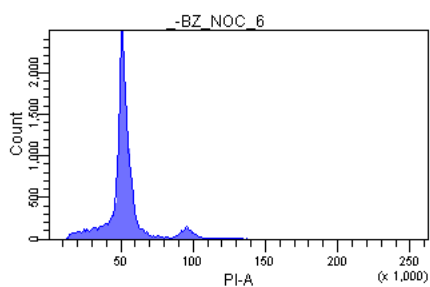


(C)**(D)**

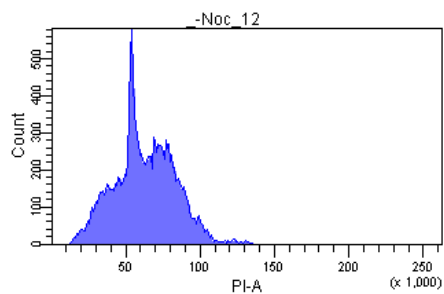
(E) Thymidine/Nocodazole;
t = 3 hr



Thymidine/Nocodazole;
t = 6 hr

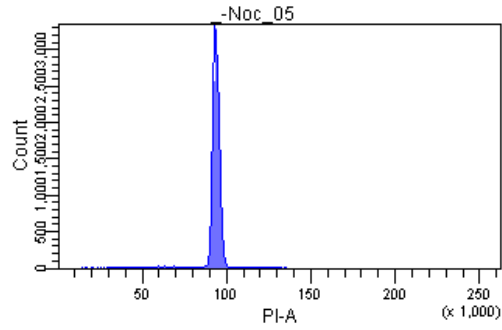


Thymidine/Nocodazole;
t = 12 hr

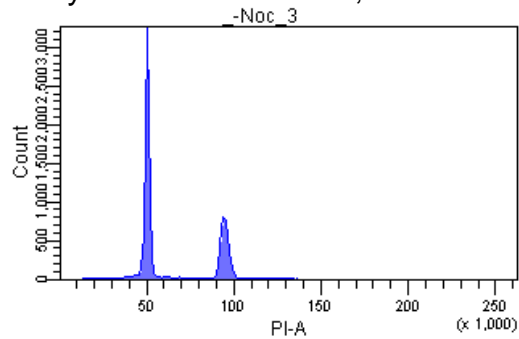


(F)

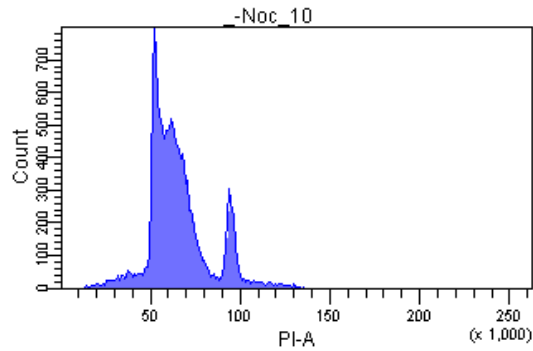
Thymidine/Nocodazole; t = 0.5 hr



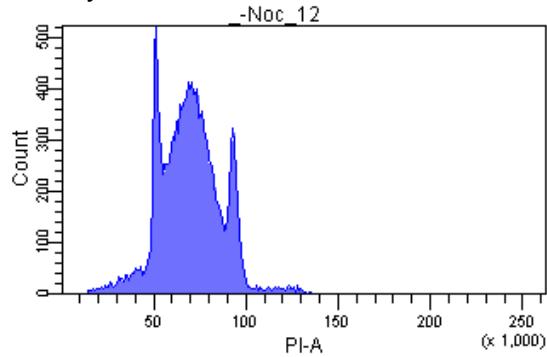
Thymidine/Nocodazole; t = 3 hr



Thymidine/Nocodazole; t = 10 hr

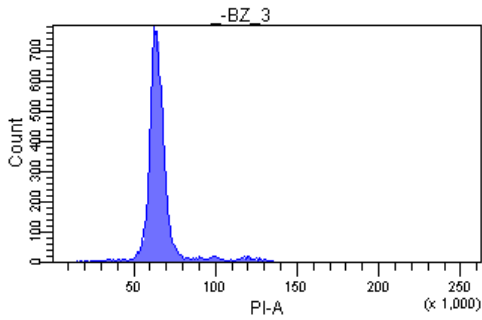


Thymidine/Nocodazole; t = 12 hr

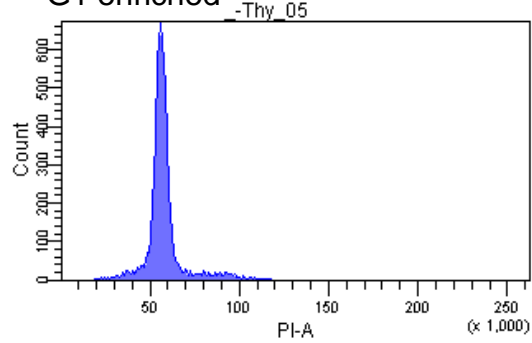


(G)

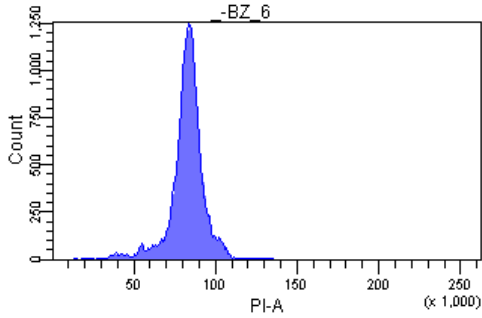
Double thymidine; t = 3 hr
G1 enriched



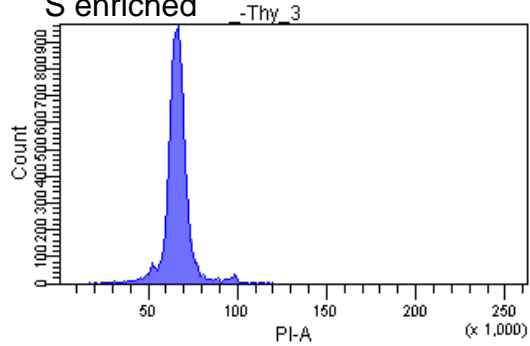
Double thymidine; t = 0.5 hr
G1 enriched



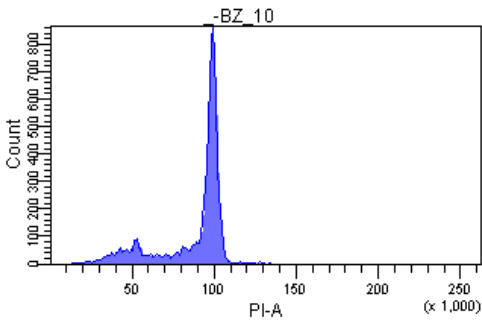
Double thymidine; t = 6 hr
S enriched



Double thymidine; t = 3 hr
S enriched



Double thymidine; t = 10 hr
G2/M enriched



Double thymidine; t = 6 hr
G2/M enriched

