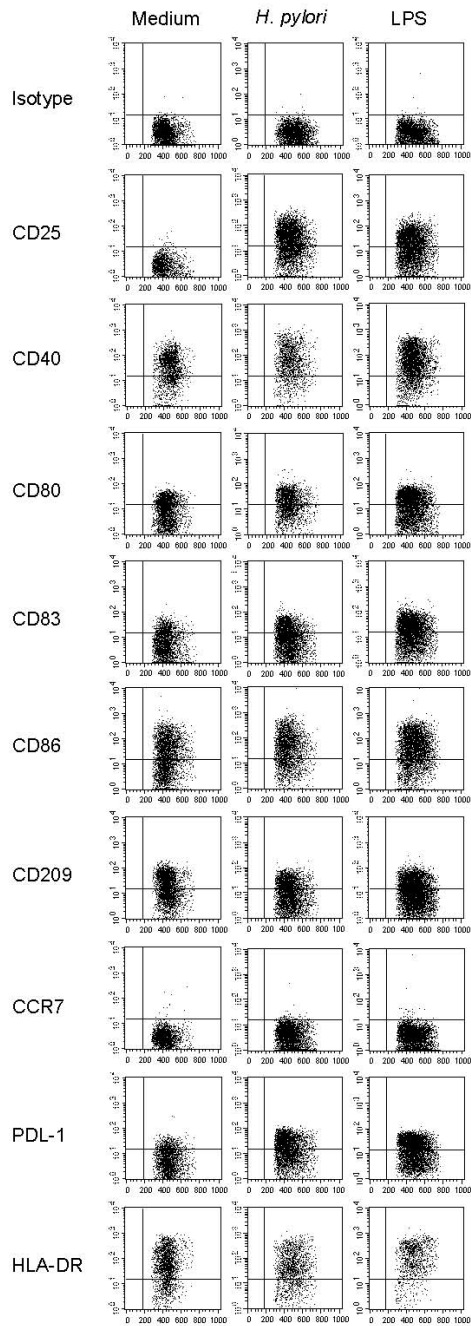


SUPPLEMENTARY FIGURES

FIGURE-S1:

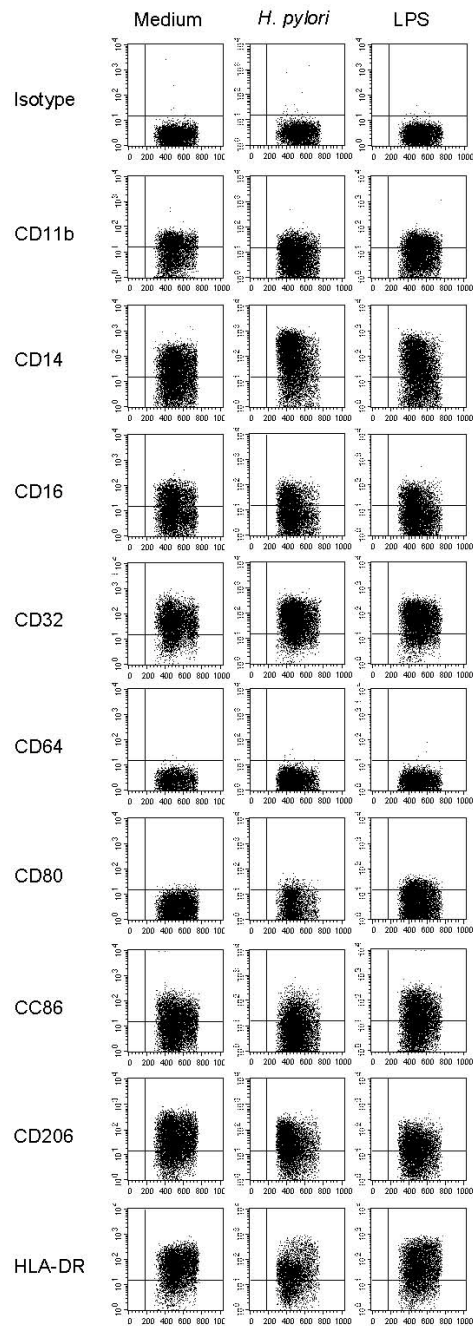
H. pylori induces the expression of CD25, CD80, CD83, CCR7, and PDL-1 but down-regulates CD209 on DCs.



Immature DCs were infected with *H. pylori* for 1 h (MOI =10). Cells were washed, incubated for another 24 h, and surface molecule expression was determined by flow cytometry. Cells incubated in the presence of LPS (100 ng/ml) or in medium alone served as controls. One representative of at least five independent experiments (donors) is shown.

FIGURE-S2:

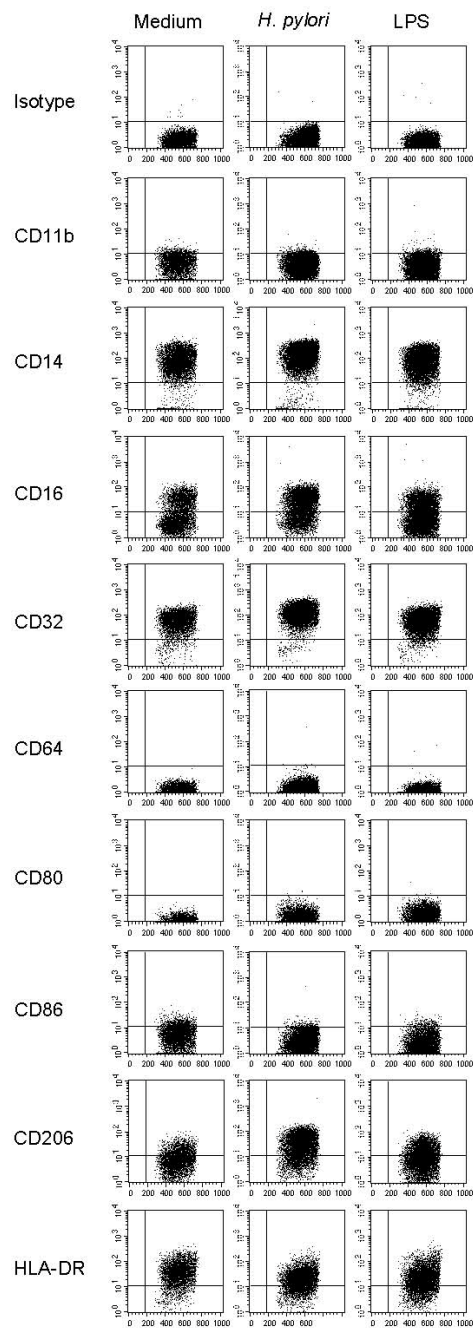
H. pylori induces the expression of CD14 and CD32 but downregulates CD11b and HLA-DR on M1 macrophages.



M1 macrophages were infected with *H. pylori* for 1 h (MOI =10). Cells were washed, incubated for another 24 h, and surface molecule expression was determined by flow cytometry. Cells incubated in the presence of LPS (100 ng/ml) or in medium alone served as controls. One representative of at least five independent experiments (donors) is shown.

FIGURE-S3:

H. pylori induces the expression of CD14 and CD206 on M2 macrophages.



M2 macrophages were infected with *H. pylori* for 1 h (MOI =10). Cells were washed, incubated for another 24 h, and surface molecule expression was determined by flow cytometry. Cells incubated in the presence of LPS (100 ng/ml) or in medium alone served as controls. One representative of at least five independent experiments (donors) is shown.