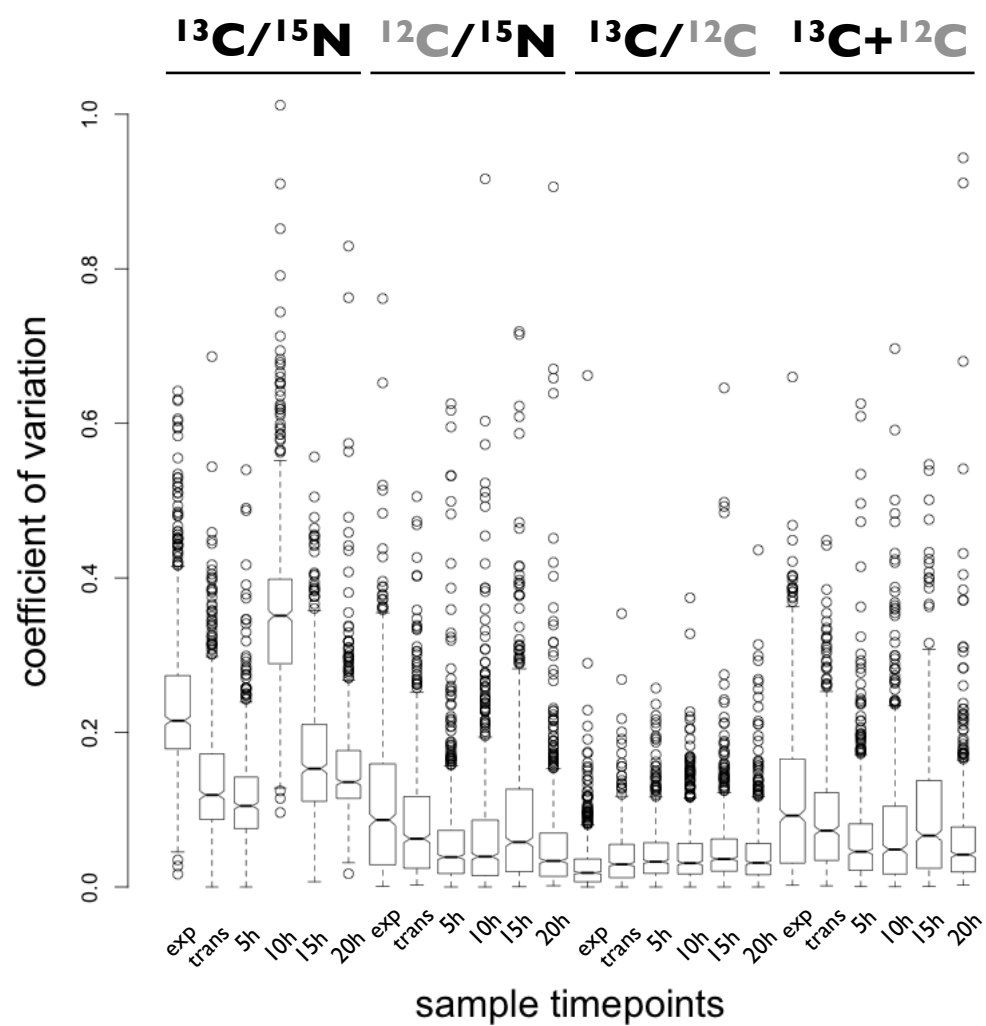


# wild-type



# *clpP* mutant

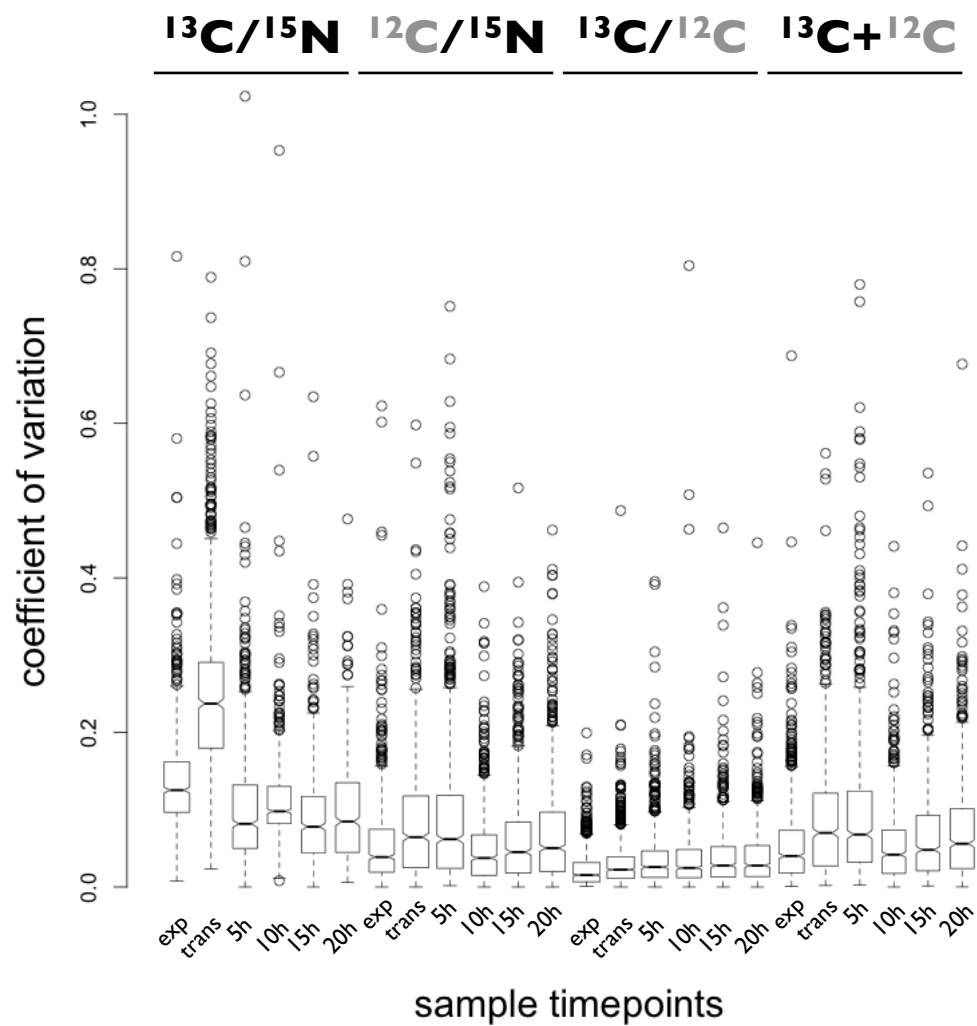
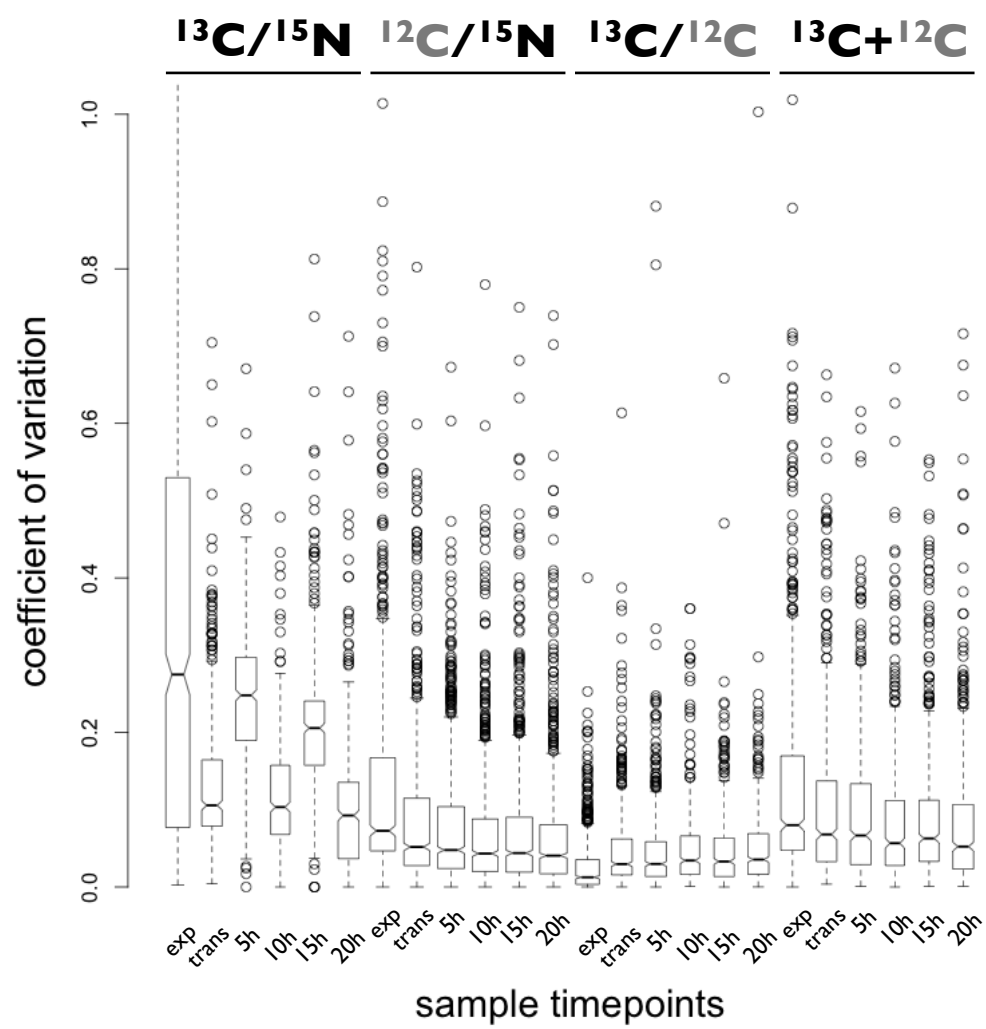


Figure S1A

# wild-type



# *clpP* mutant

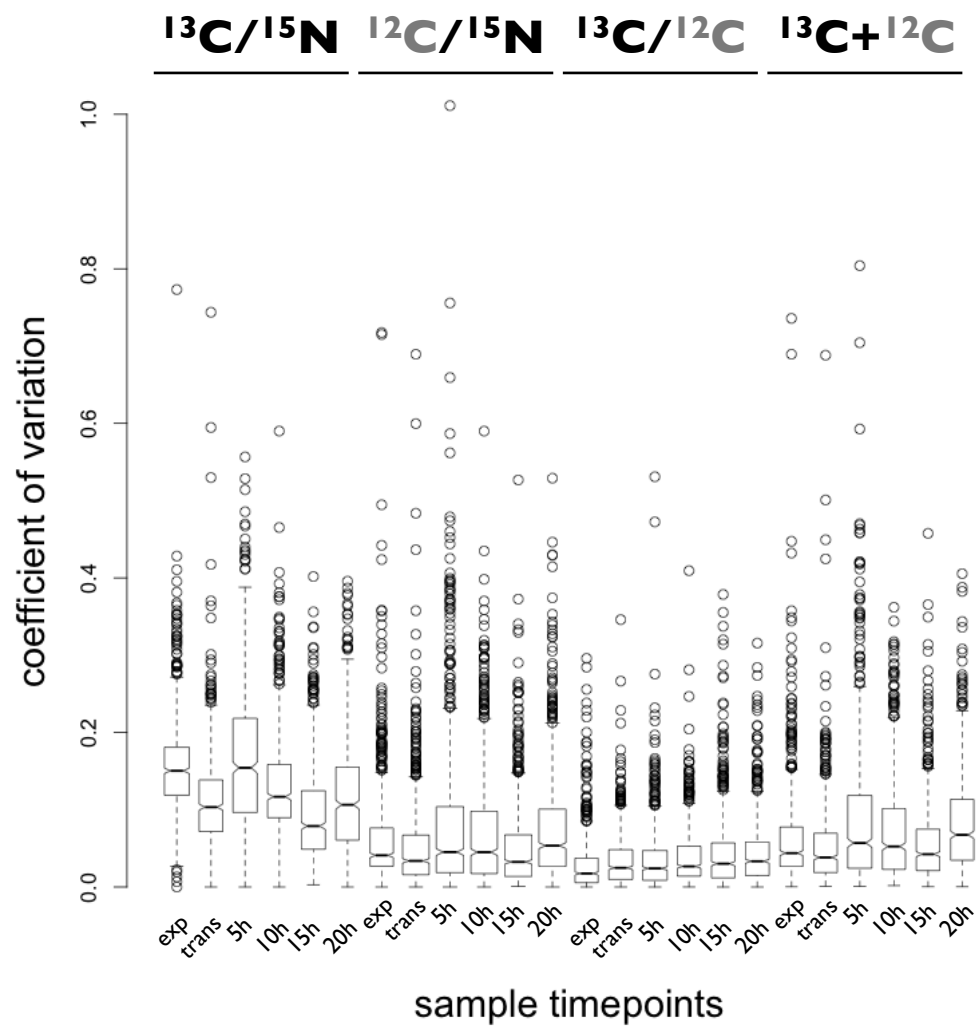


Figure S1B

# wild-type, soluble fraction

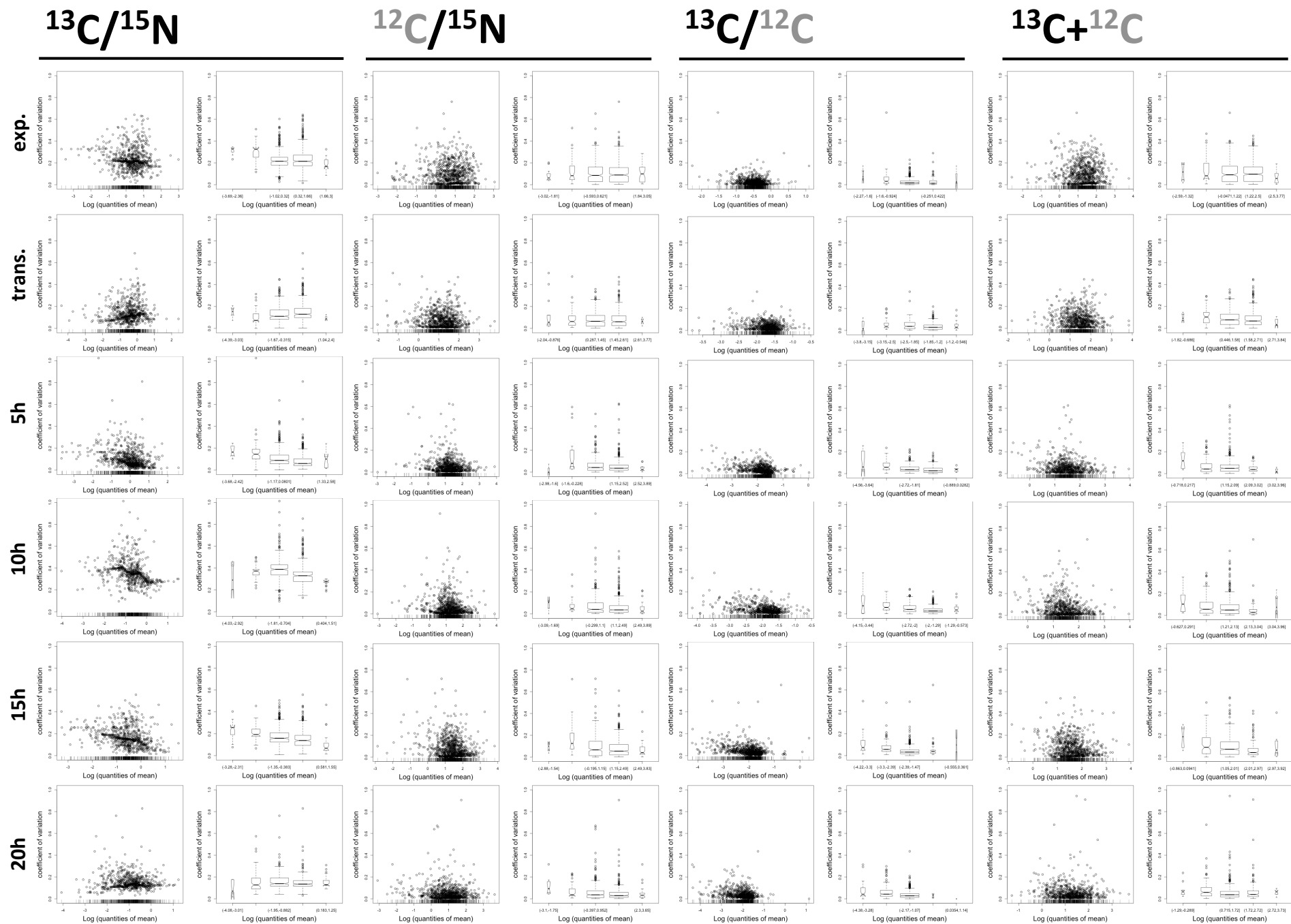


Figure S1C

# wild-type, non-soluble fraction

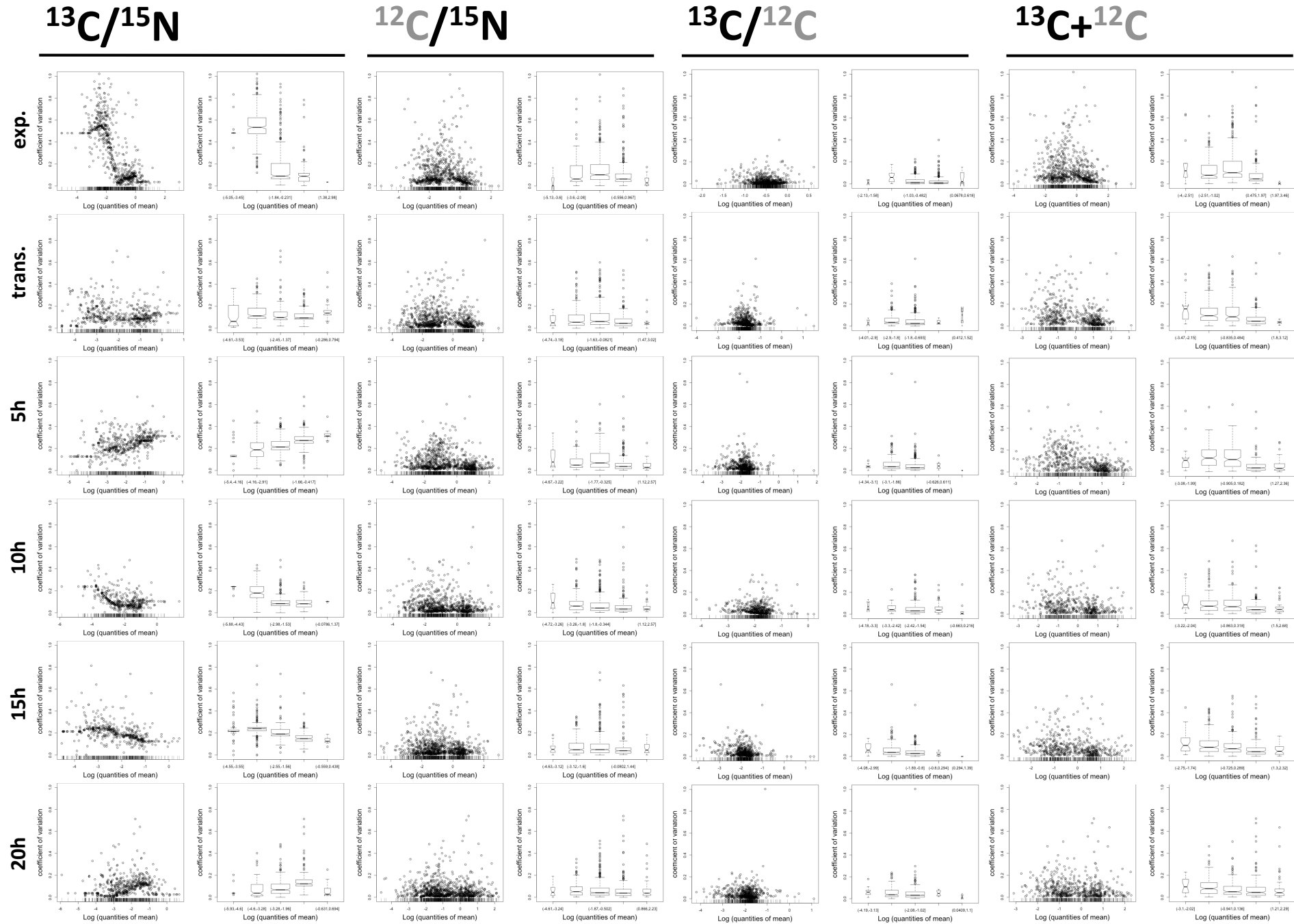


Figure S1D

**Figure S1:**

A boxplot is depicted for the coefficients of variation of the  $^{13}\text{C}/^{15}\text{N}$ ,  $^{12}\text{C}/^{15}\text{N}$ ,  $^{13}\text{C}/^{12}\text{C}$  and  $^{13}\text{C}/^{15}\text{N} + ^{12}\text{C}/^{15}\text{N}$  values for the wild type and the *clpP* mutant strain of the (A) soluble and (B) non-soluble fraction. In addition a variation plot and the corresponding boxplot are displayed for the correlation between quantity and coefficient of variation of each sample point for the (C) soluble and (D) non-soluble fraction.