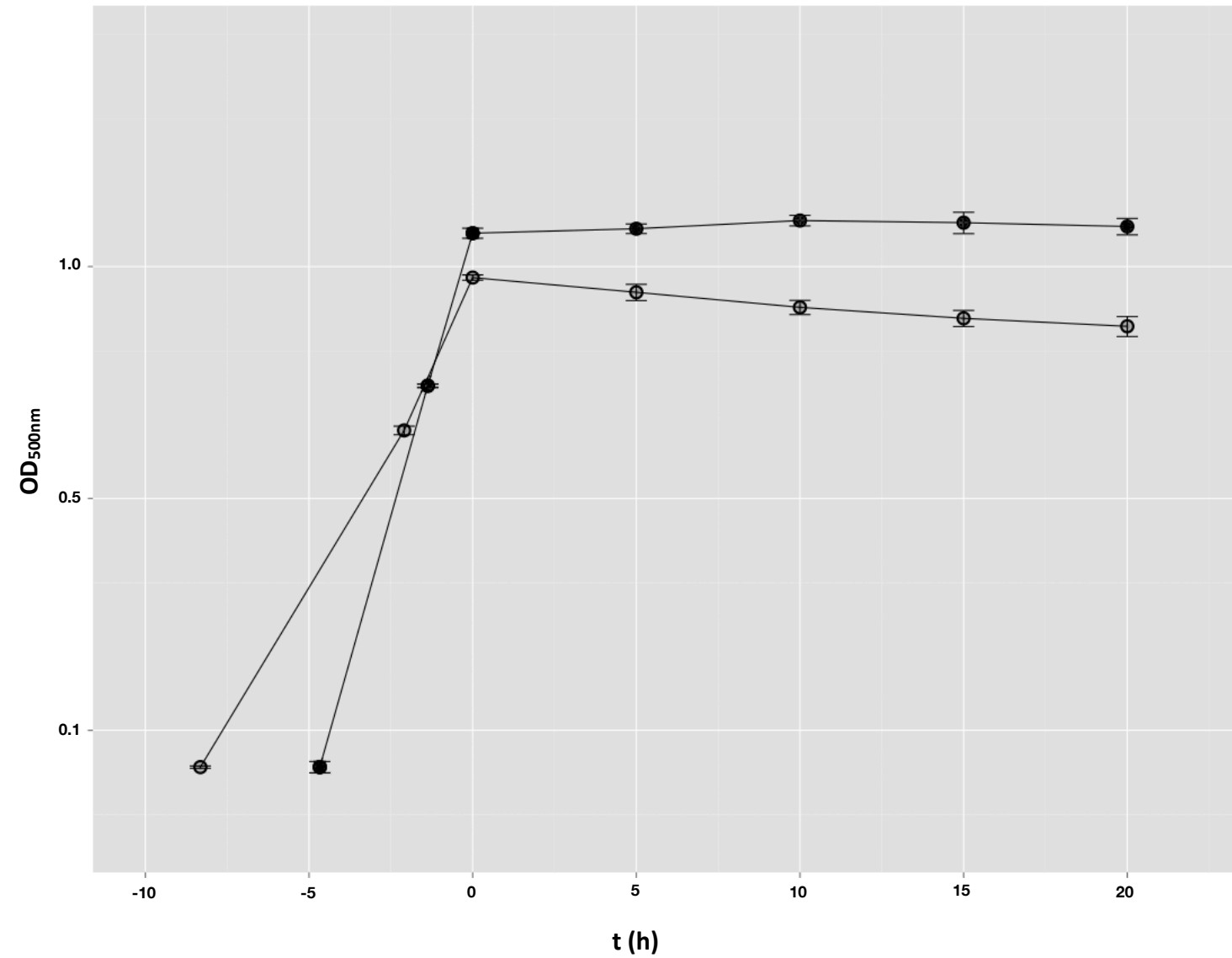
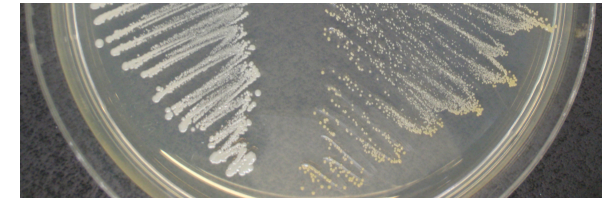


S.aureus strains in CDM



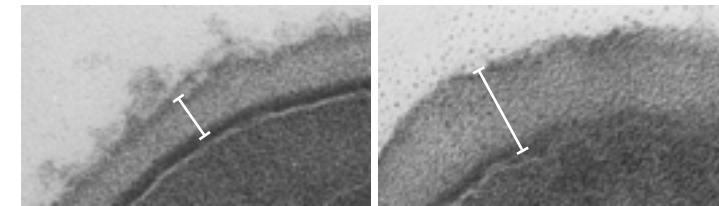
TSB plate

wild type $\Delta clpP$



cell wall (TEM)

wild type $\Delta clpP$



36.7 nm \pm 4.94

60.4 nm \pm 4.11

Western blot

wild type $\Delta clpP$
log stat log stat

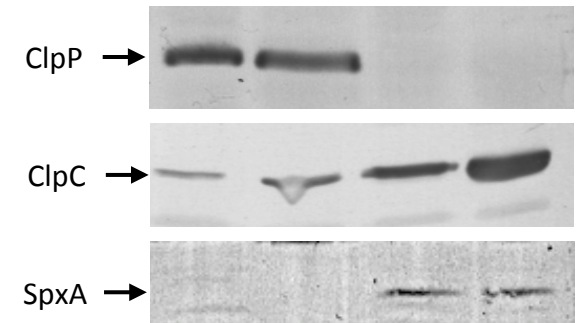


Figure S6

Figure S6:

Growth curves are shown for the wild type (closed circles) and *clpP* mutant (open circles). The cells were grown at 37°C in a chemically defined medium. As a phenotypical difference, a stronger pigmentation and a thicker cell wall could be observed the *clpP* mutant. As expected the deletion of *clpP* leads to the induction of ClpC and stabilization of SpxA.