

Supplemental Data. Figure S2

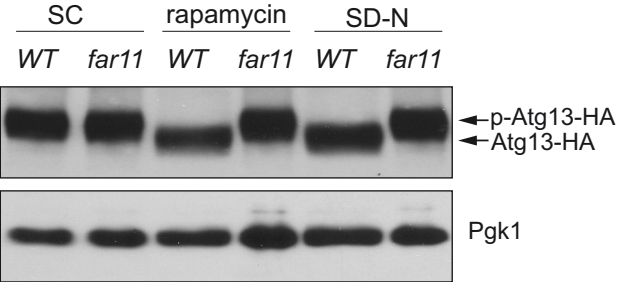


Figure S2. Atg13 is dephosphorylated after the induction of autophagy in a Far11-dependent manner. Western-blot of protein extracts from yeast cells expressing a HA-tagged version of Atg13. Cells were grown in SC medium, SC plus rapamycin (100nM) and SD-N (nitrogen starvation conditions; 0.17 YNB without aa, without ammonium sulfate + 2% glucose). The blot was probed with an anti-HA antibody. The cytosolic protein Pgk1 was used as a loading control.