

Supplementary:

Table I. Primers for real-time PCR

Genes	Forward	Reverse
Arginase I	CAGAAGAATGGAAGAGTCAG	CAGATATGCAGGGAGTCACC
iNOS	AATAGAGGAACATCTGGCCAGG	ATGGCCGACCTGATGTTGC
IL-10	AGTGGAGCAGGTGAAGAGTG	TTCGGAGAGAGGTACAAACG
IL-12	GTTCGAATCCAGCGCAAGAA	AGACATTCCCGCCTTTGCA
IL-6	GAGAAAAGAGTTGTGCAATGGC	CCAGTTTGGTAGCATCCATCAT
TNF- α	TGTAGCCCACGTCGTAGCAAA	CTGGCACCACCTAGTTGGTTGT
TGF- β	TGCTAATGGTGGACCGCAA	CACTGCTTCCCGAATGTCTGA
IFN- γ	GCAACAGCAAGGCGAAAAA	GAAGACCATTCCCGACAAAA
VEGF	TTACTGCTGTACCTCCACC	ACAGGACGGCTTGAAGATG

Supplemental Figure 1

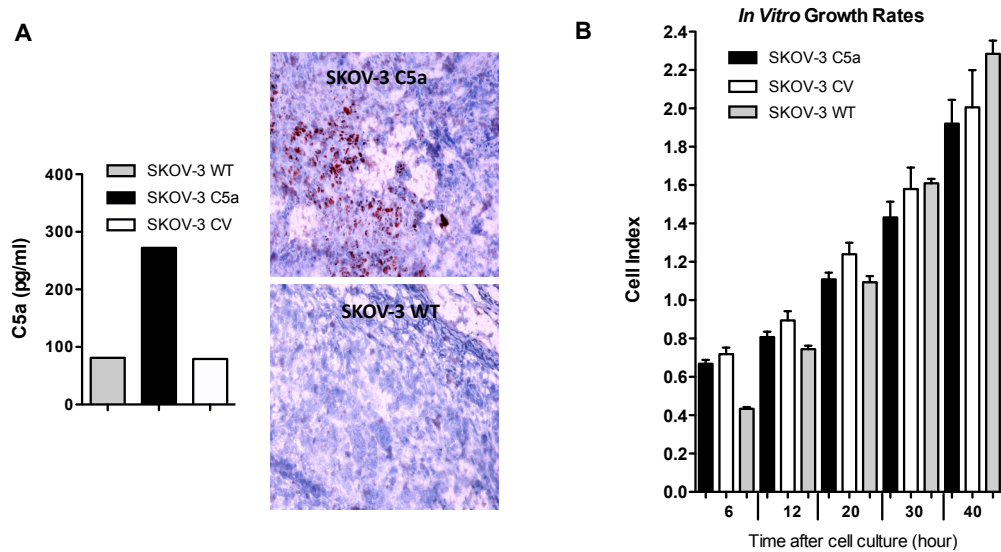


Figure S1. C5a expression by transfected SKOV-3 cells and *in vitro*. (A) C5a levels of SKOV-3 cells by ELISA from SKOV-3 wildtype (WT), SKOV-3 C5a or SKOV-3 CV cells. Staining of tumor tissue sections following *in vivo* passage by IHC revealed expression of C5a (brown) in SKOV-3 C5a tumor but not in SKOV-3 WT tumor. Magnification: 20x. (B) *In vitro* SKOV-3 cell growth at different timepoints as indicated.

Supplemental Figure 2

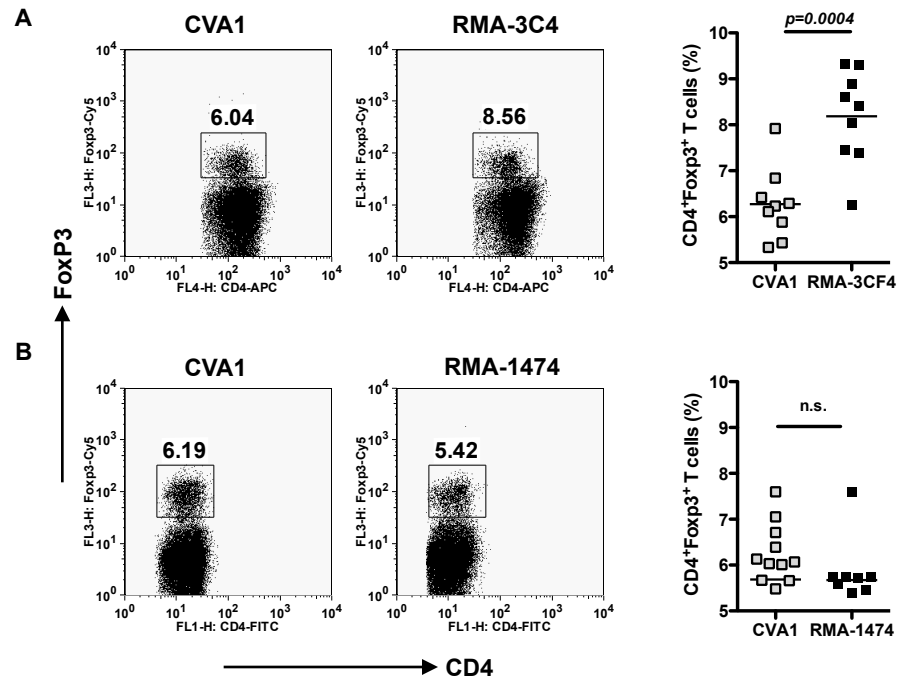


Figure S2. Splenic Treg infiltration in tumor-bearing mice. (A) Splens from C5a-high expressing lymphoma RMA-3CF4 or RMA CVA1 were stained for CD4 and Foxp3. Representative dot plots (cells were gated on the CD4⁺ T cells) and summarized data are shown. (B) Splens from C5a-low expressing lymphoma RMA-1474 or RMA CVA1 were stained for CD4 and Foxp3. Representative dot plots (cells were gated on the CD4⁺ T cells) and summarized data are shown.