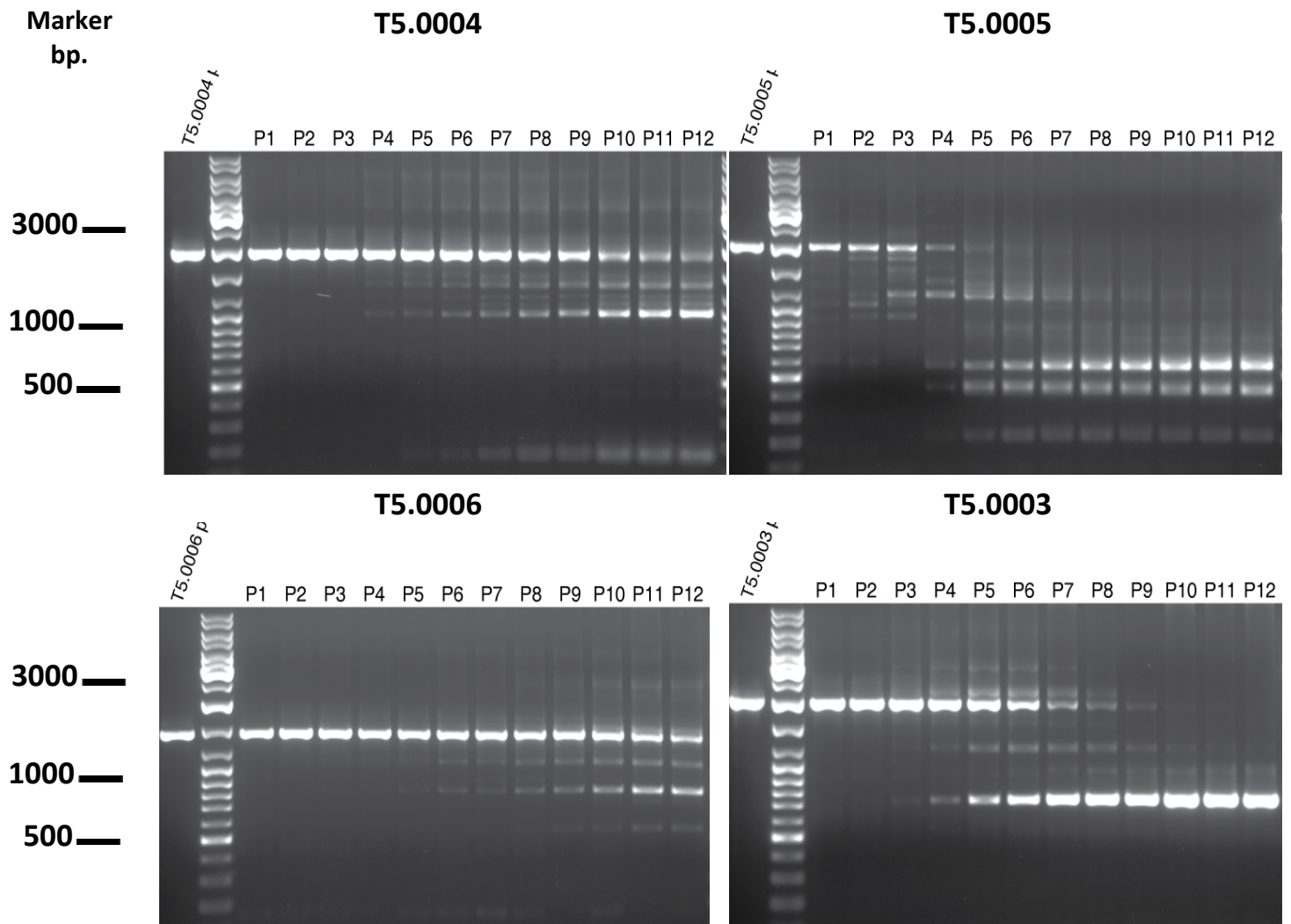


Supplemental Figure 2



Supplemental Figure 2. Stability profile of vectors by serial passage. This shows the stability of the named vectors (see main text, Table 1), during serial passage as shown in Figure 2 in the main body of the paper. The sizes of the original PCR amplified bands are: T5.0004 – 1761bp.; T5.0005 – 1821bp.; T5.0006 – 1282bp.; T5.0003 – 1788bp. The lane on the far left in each gel is an amplification from the original plasmid, and the lane next to it is a size marker, with key sizes as shown.