

Supporting Information

Hollis and Zou 10.1073/pnas.1206218109

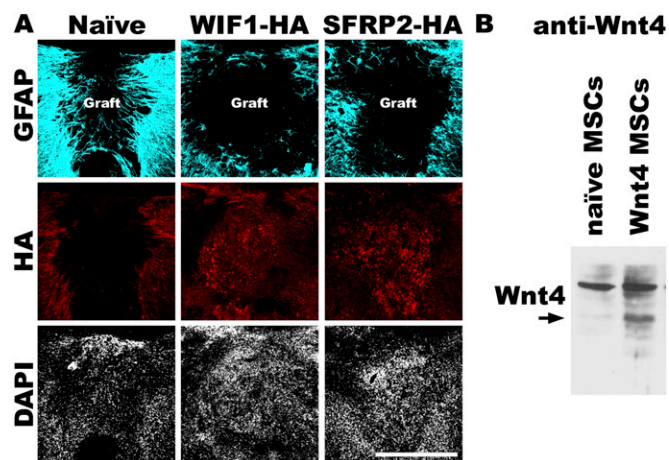


Fig. S1. Bone marrow stromal cells (BMSCs) continue to express Wnt4, Wnt inhibitory factor 1 (WIF1), and SFRP2 at 1 mo post spinal cord injury (SCI). (A) Fluorescent immunohistochemistry demonstrates HA staining of BMSC grafts in animals grafted with HA-tagged WIF1 and SFRP2, but not with naïve BMSCs. (B) Western blot detection of Wnt4 from Wnt4-secreting BMSC grafts excised at 1 mo post SCI. (Scale bar, 500 μ m.)

Other Supporting Information Files

[SI Appendix \(DOCX\)](#)