

# Supplementary Figure 2

Multiple alignments of the deduced amino acid sequences for IPPi identified from insects

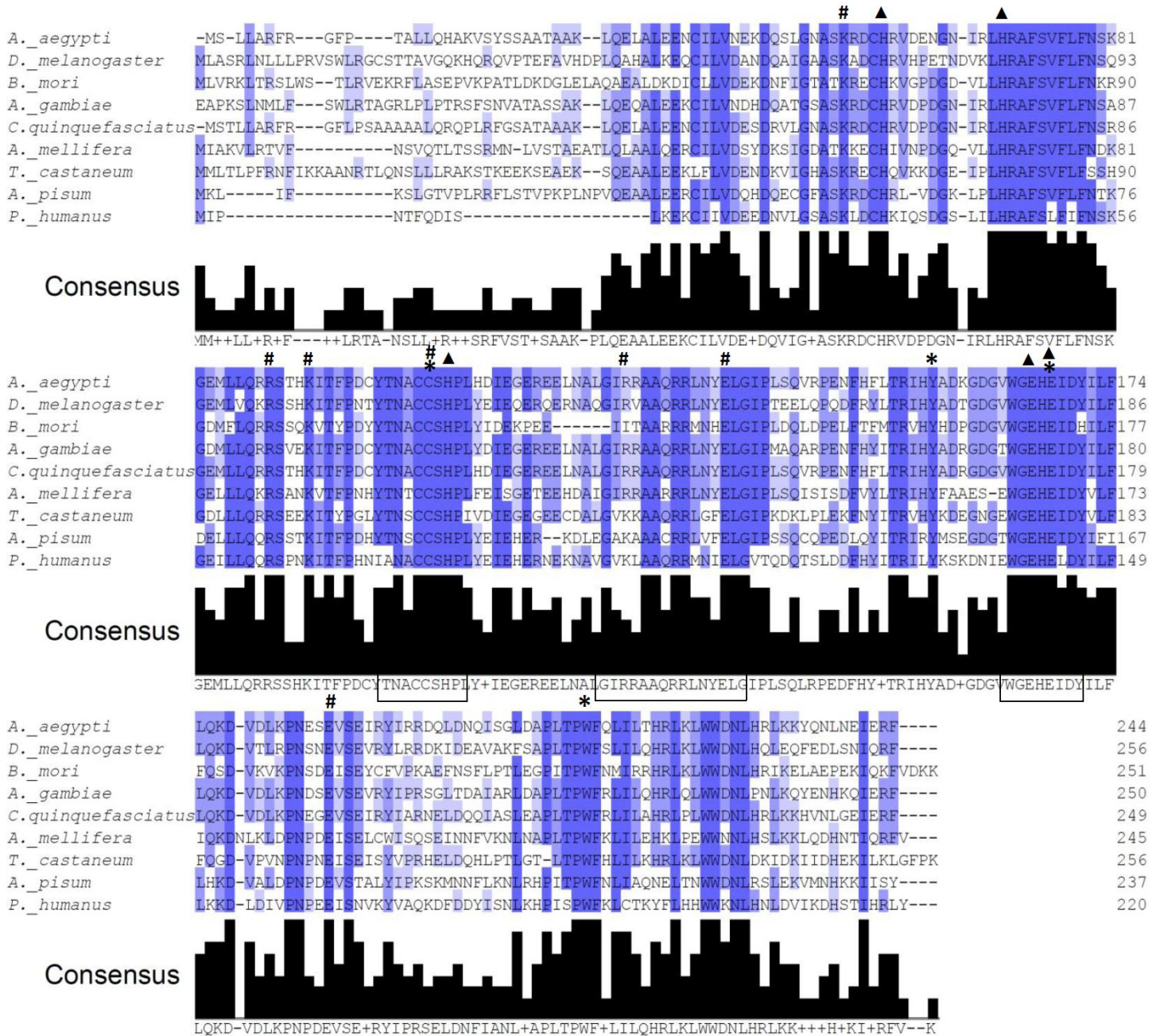


Figure captions are as in Fig 2. (▲): Residues important for metal coordination. (\*): Residues important for catalysis. (#): Residues important for interaction with the diphosphate moiety of the substrate. The putative NUDIX motif is highlighted by a grey box.

Accession numbers: *Aedes aegypti*: AAEL006144; *Drosophila melanogaster*: CG5919; *Bombyx mori*: BGIBMGA004904-PA; *Anopheles gambiae*: XP\_321388.3; *Culex quinquefasciatus*: XP\_001868438.1; *Apis mellifera*: XP\_001121223; *Tribolium castaneum*: XP\_971524.1  
*Acyrtosiphon pisum*: BAH70865.1; *Pediculus humanus*: XP\_002430029