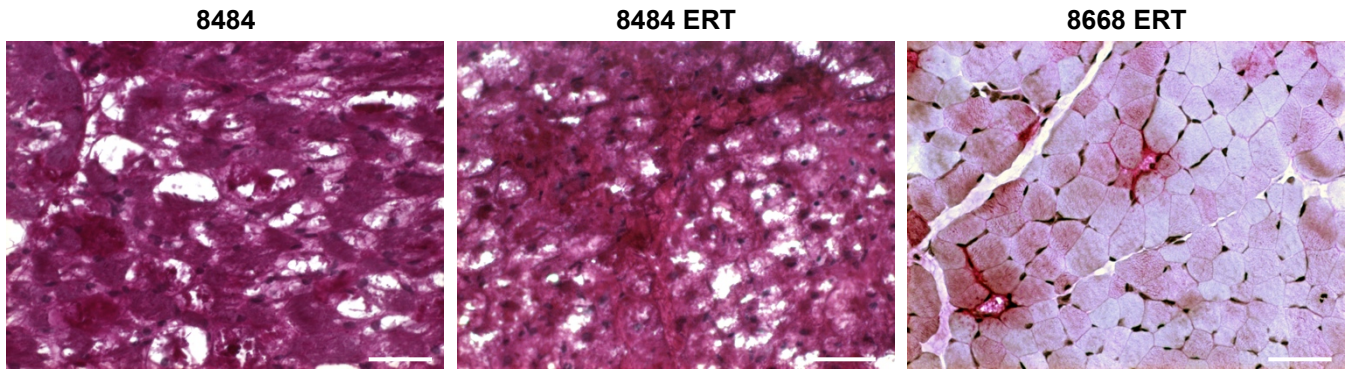


a

Infantile-onset GSDII patients



b

Adult-onset GSDII patient

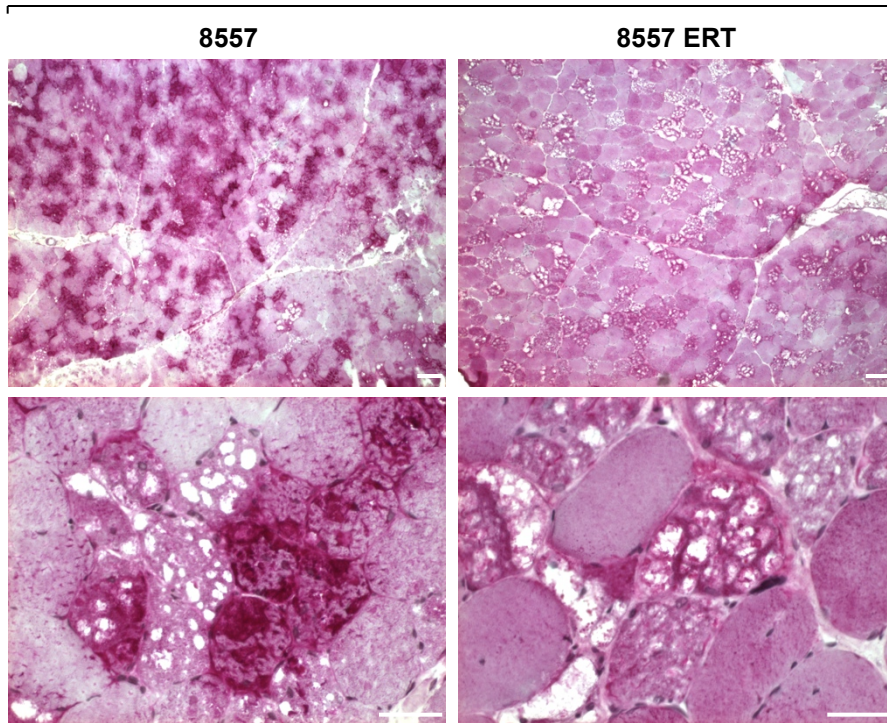


Figure S2. PAS staining of pre- and post-ERT biopsies in infantile and adult-onset GSDII patients. **(a)** Infantile-onset GSDII patients (8484: pre-ERT biopsy; 8484 ERT: post-ERT biopsy; ERT started at 8 months; 8668 ERT: post-ERT biopsy; ERT started at 3 weeks). **(b)** Adult-onset GSDII patient (8557: pre-ERT biopsy; 8557 ERT: post-ERT biopsy). Bar: 40µm.