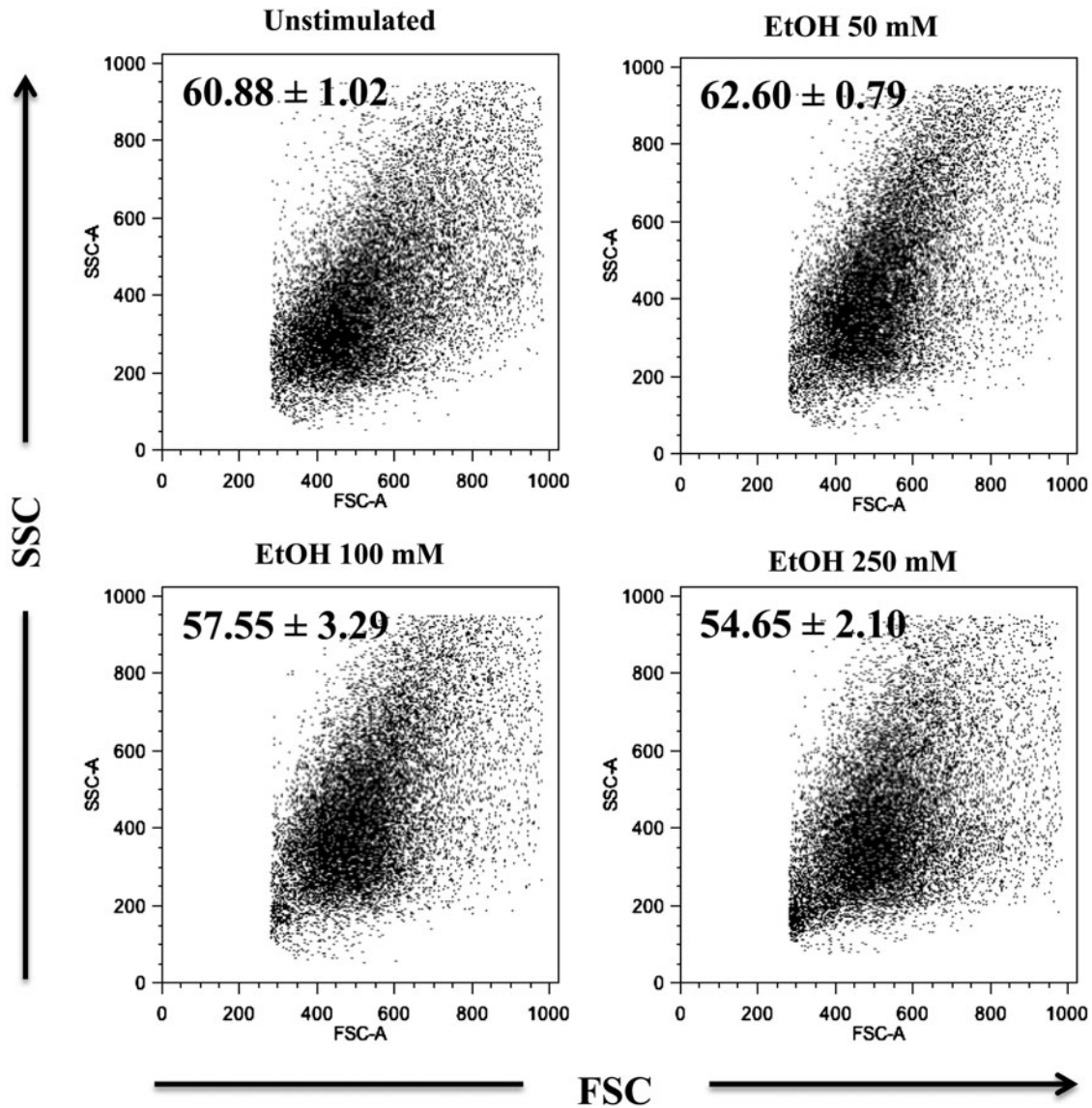


Supplementary Data



SUPPLEMENTARY FIG. S1. Ethanol exposure did not influence the percentage of live cells. Bone marrow-derived dendritic cells (2×10^6 cell/well) were cultured in 96-well plates in the presence or absence of varying concentrations of ethanol for 24 h at 37°C. The cells were harvested, and cell suspensions were analyzed for cell viability by flow cytometry. Representative FACS plots were taken from a single animal and demonstrate the percentage of viable cells within the live gate of total events collected. Numbers indicate the mean percentage of cells in the live gate \pm SEM, $n=4$. $P>0.05$.