

SUPPLEMENTAL FIGURES

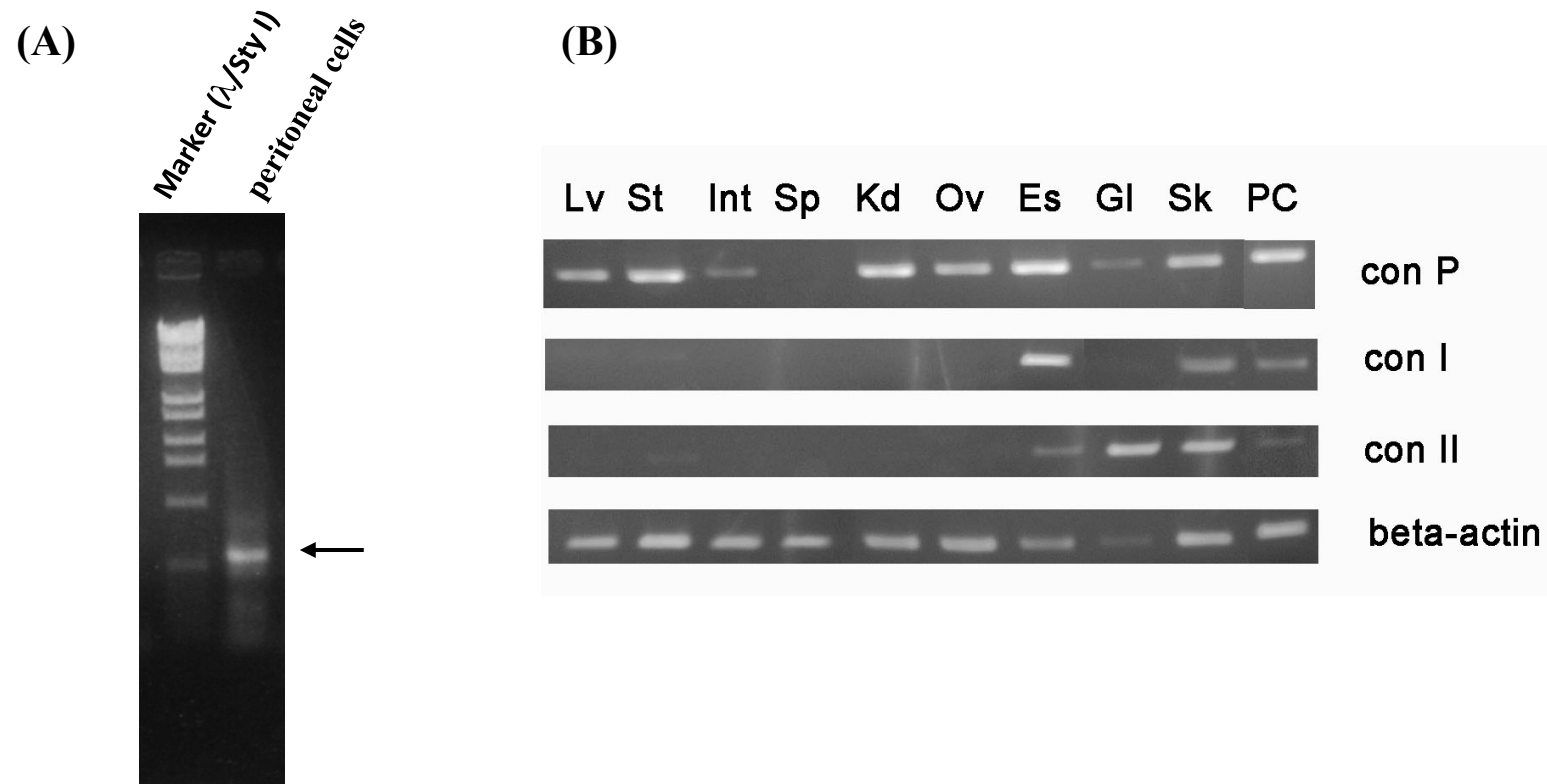


FIGURE S1. RT-PCR analysis of RNA from the peritoneal cells of conger eel using common primers for congerins (A) and RNAs from various tissues using specific primers for individual RNAs of Con-P, Con I and ConII (B). Lv, liver; St, stomach; Int, intestine; Sp, spleen; Kd, kidney; Ov, gonad; Es, esophagus; Gl, gill; Sk, skin; PC, peritoneal cells. Beta actin was used as control.