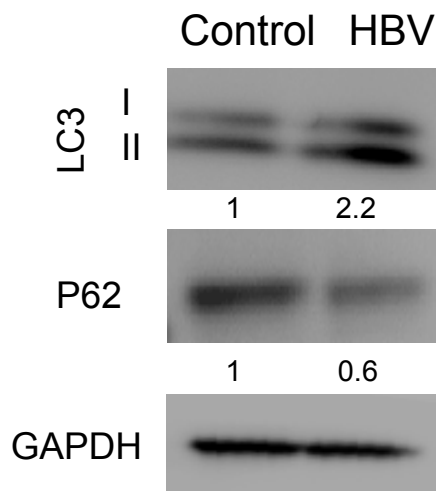
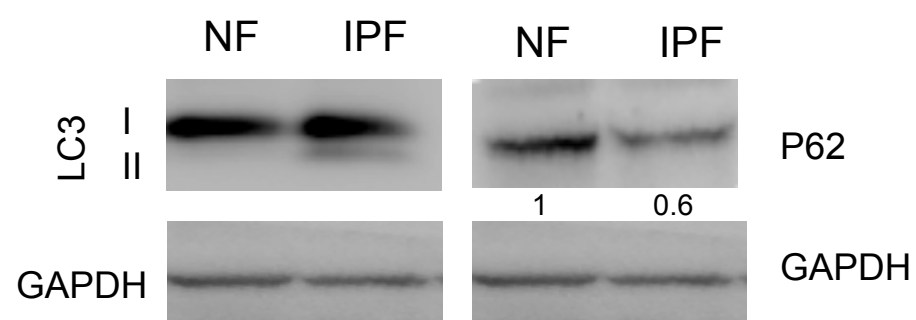


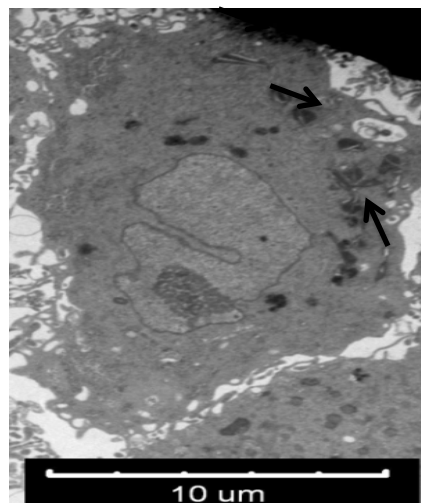
A 1° human stellate cells



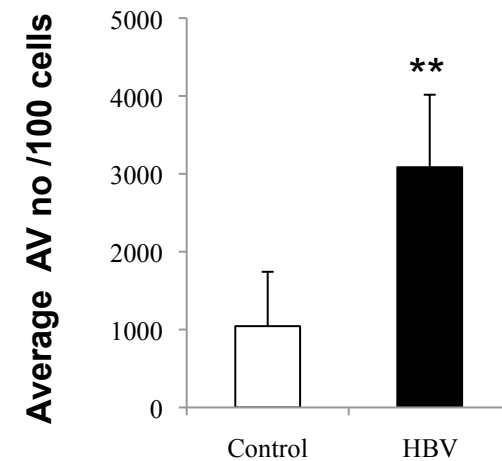
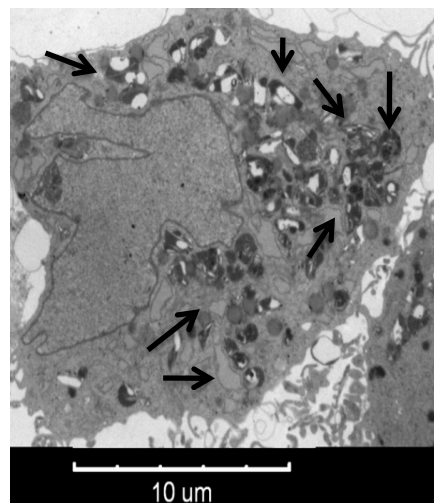
C 1° human pulmonary fibroblast



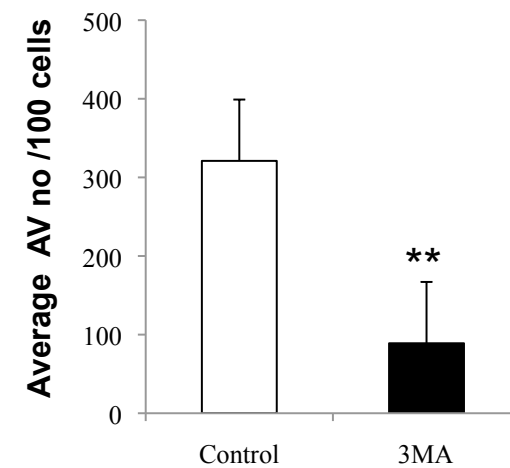
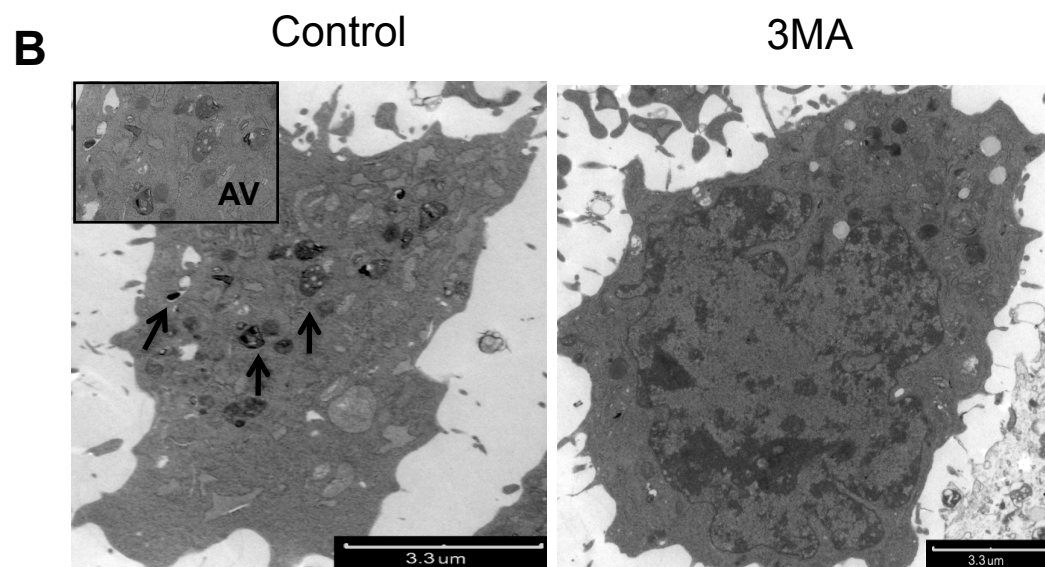
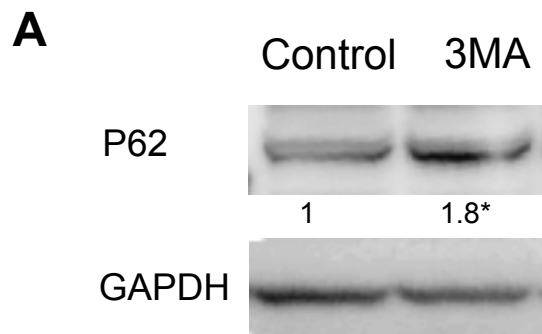
B Control



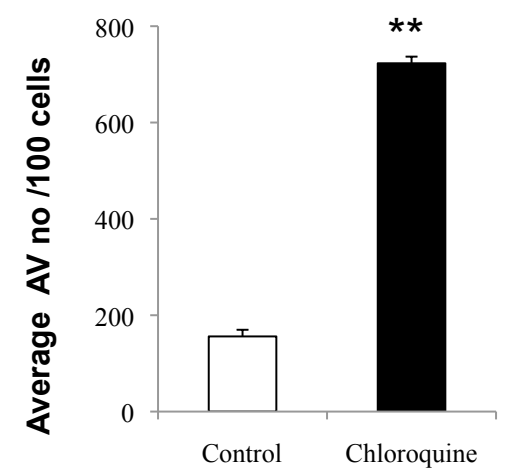
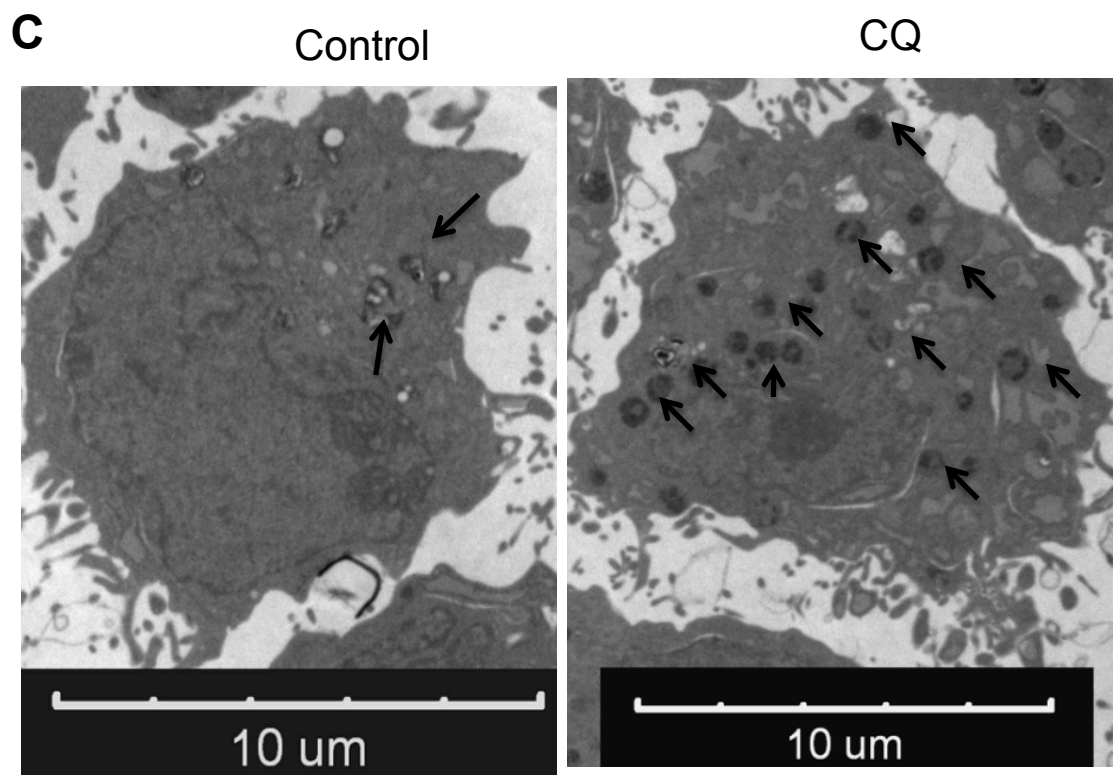
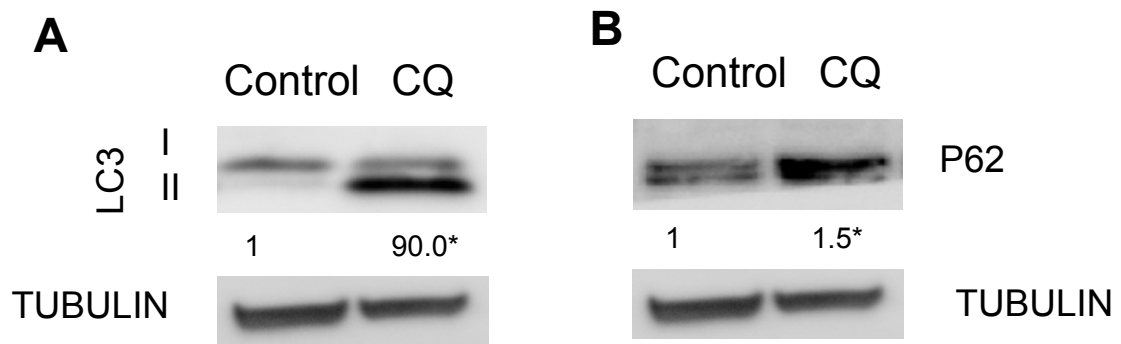
HBV



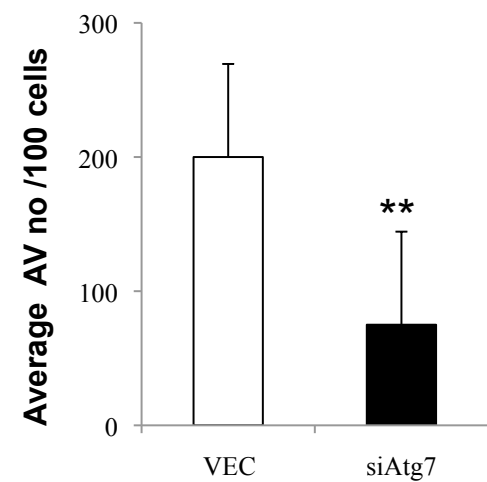
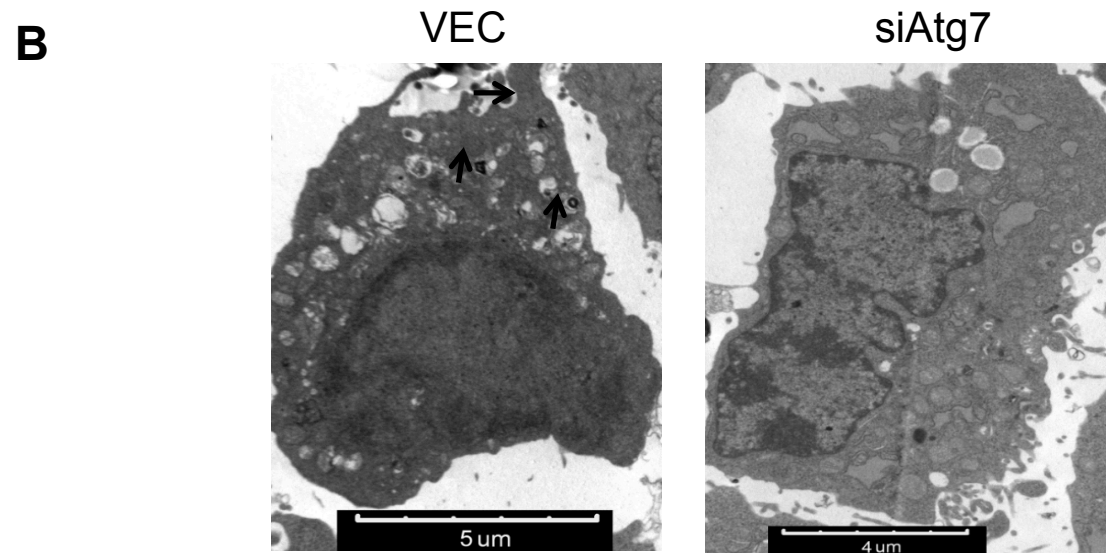
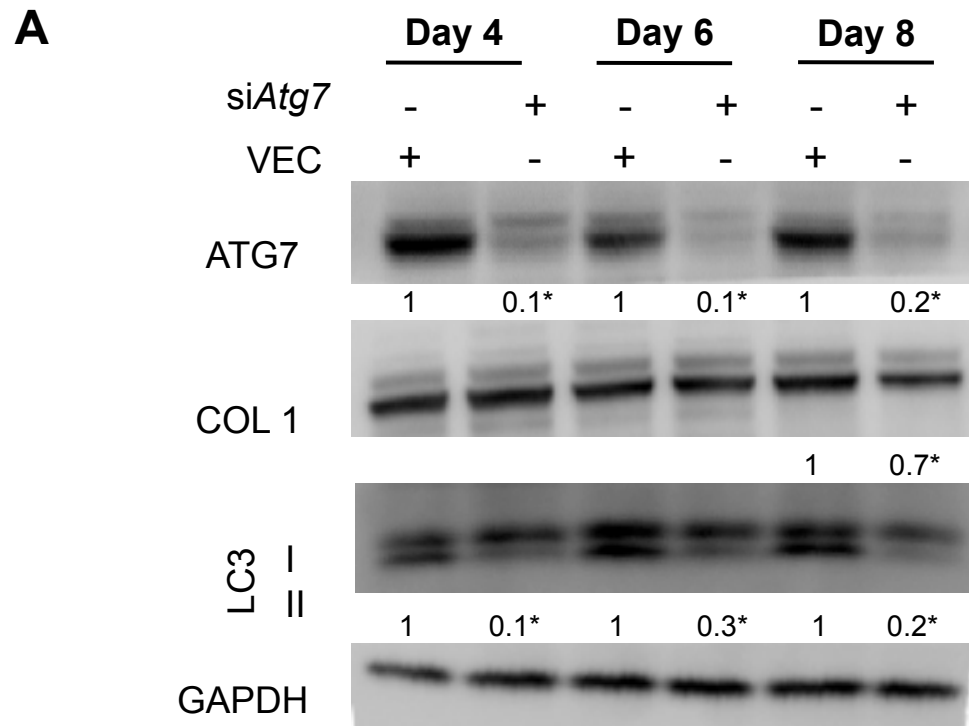
Supplemental Figure 1. Autophagy is upregulated in human stellate cells after liver injury *in vivo* and in primary human fibroblasts from patients with idiopathic pulmonary fibrosis



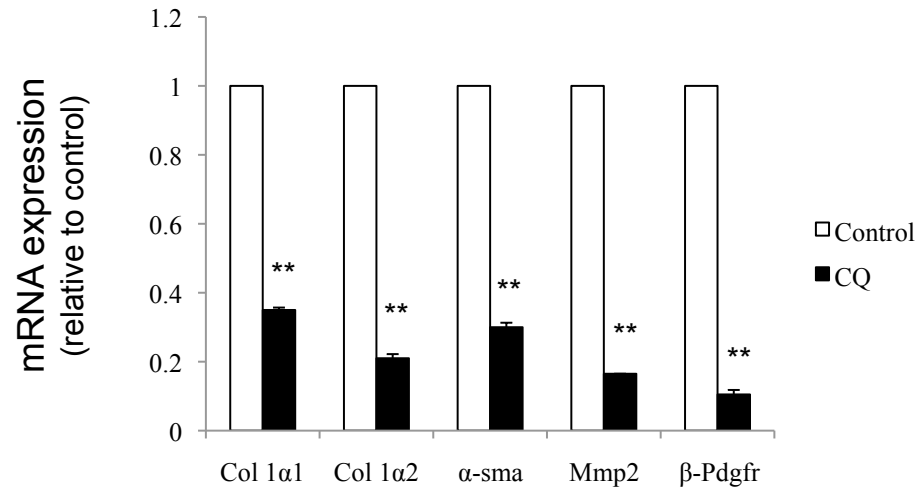
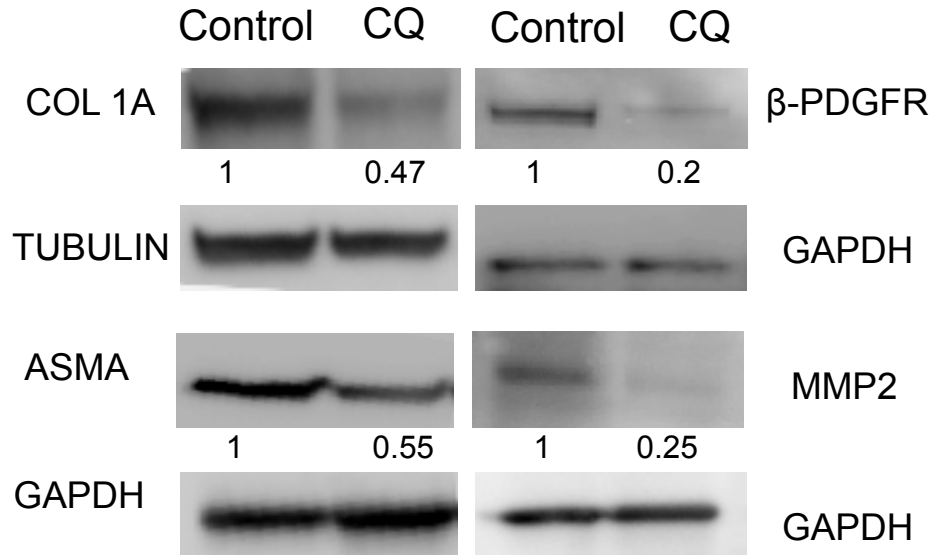
Supplemental Figure 2. 3MA blocks autophagy in stellate cells



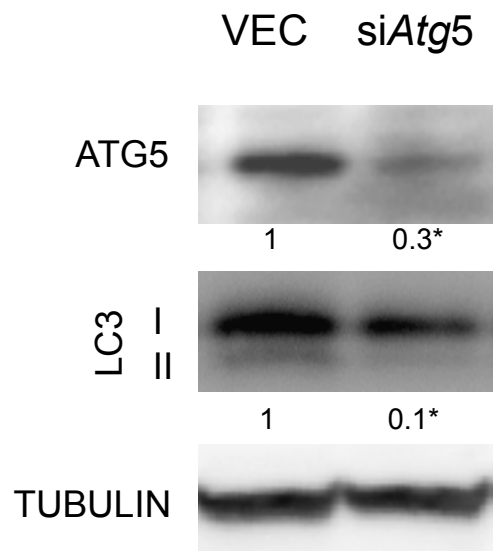
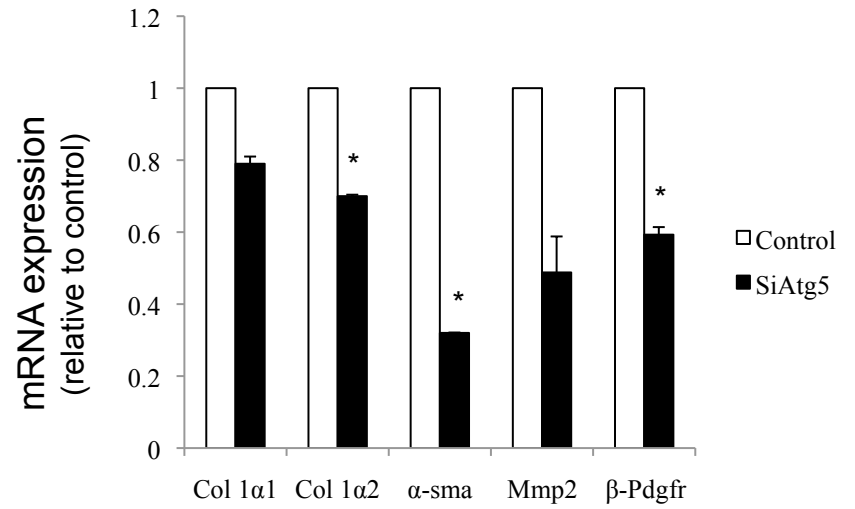
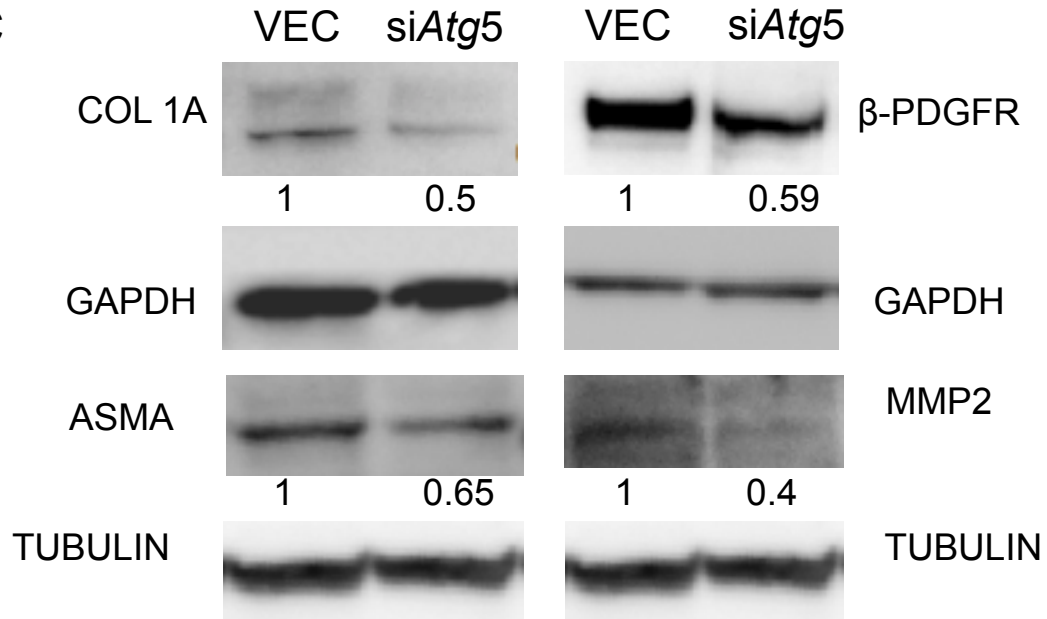
Supplemental Figure 3. Chloroquine blocks autophagy in stellate cells



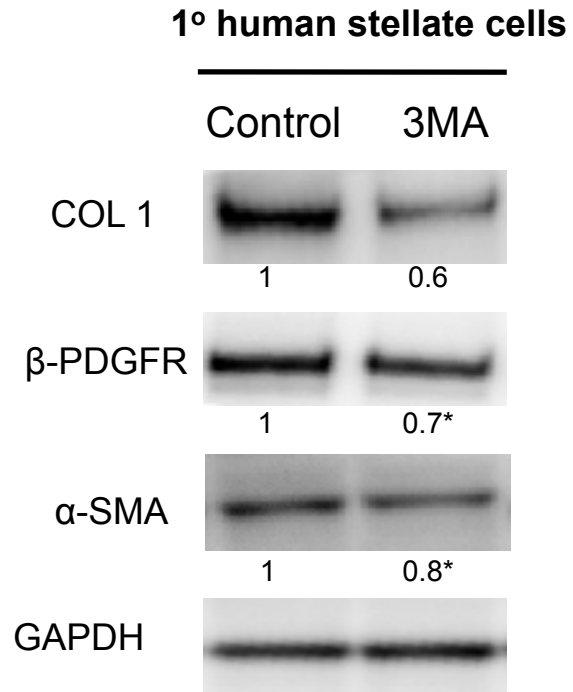
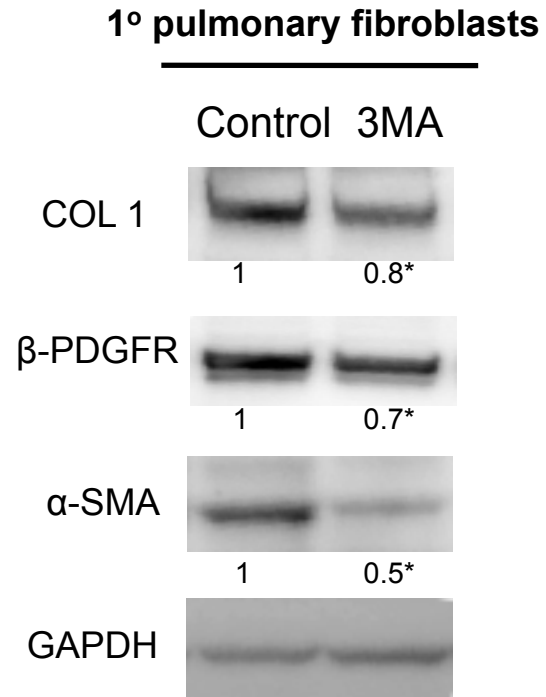
Supplemental Figure 4. Autophagy is attenuated in stellate cells by silencing *Atg7*.

A**B**

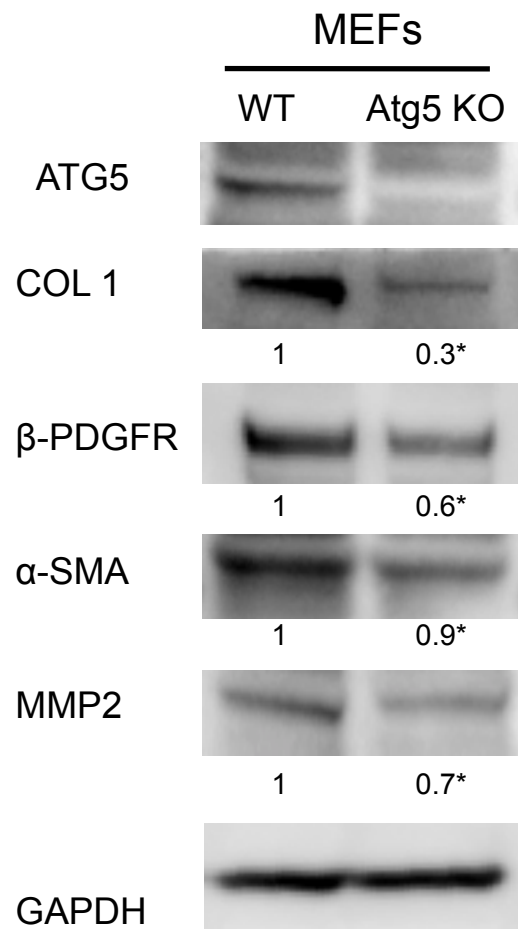
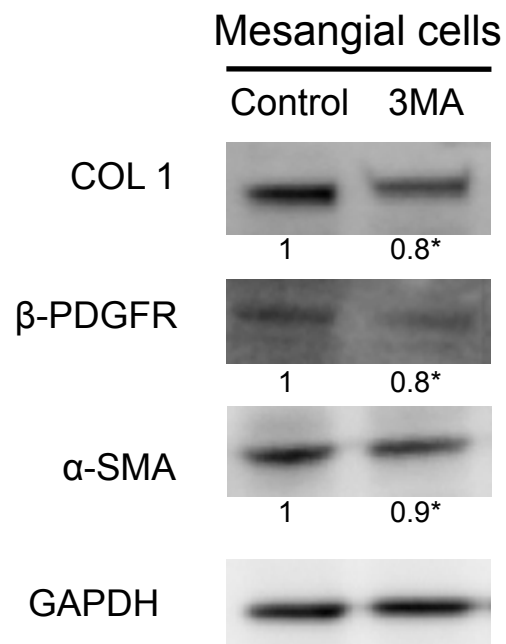
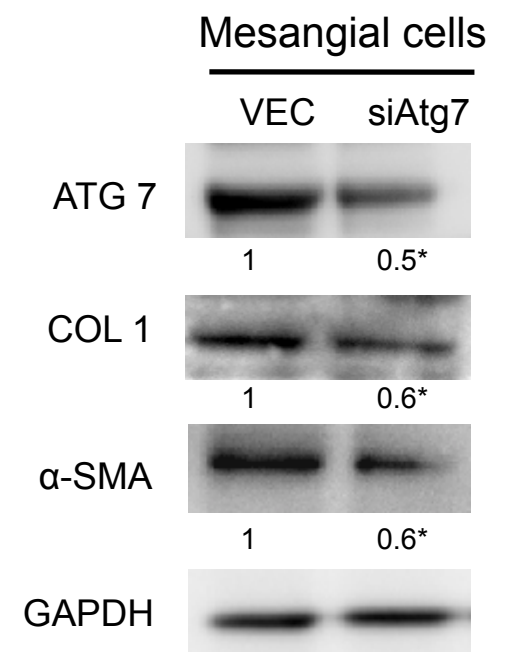
Supplemental Figure 5. Treatment with chloroquine in stellate cells decreases fibrogenesis

A**B****C**

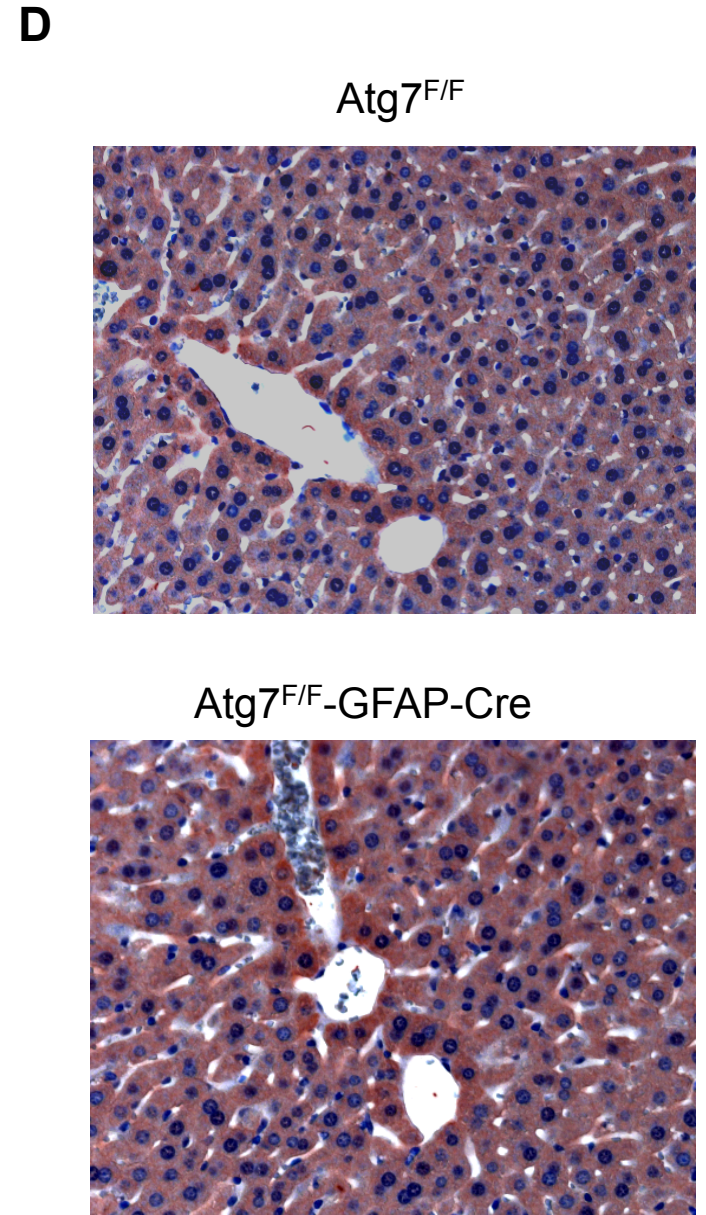
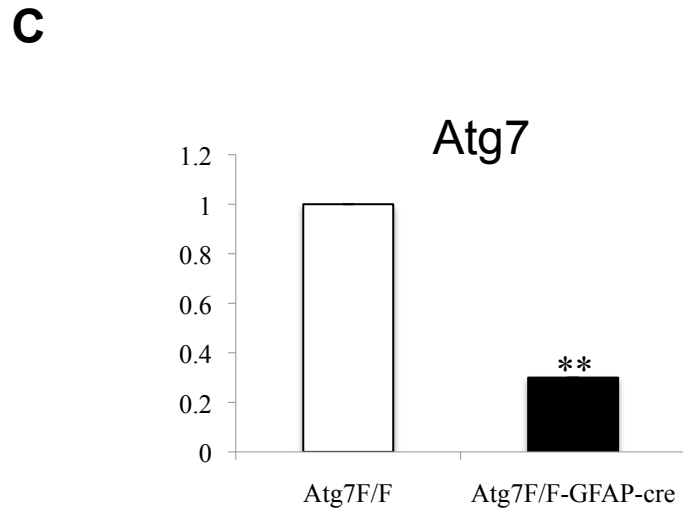
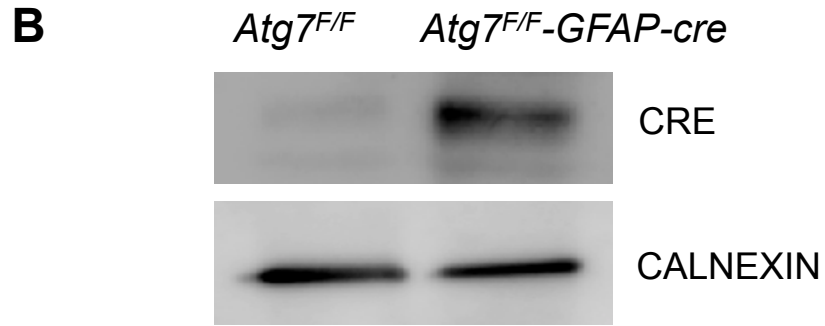
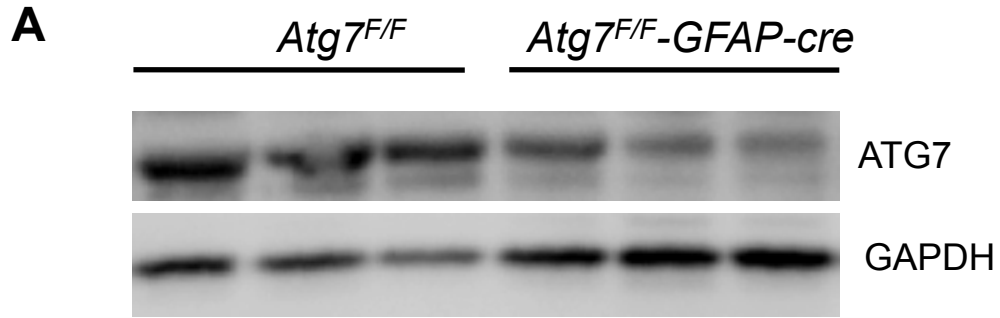
Supplemental Figure 6. Knockdown of Atg5 in stellate cells decreases fibrogenesis.

A**B**

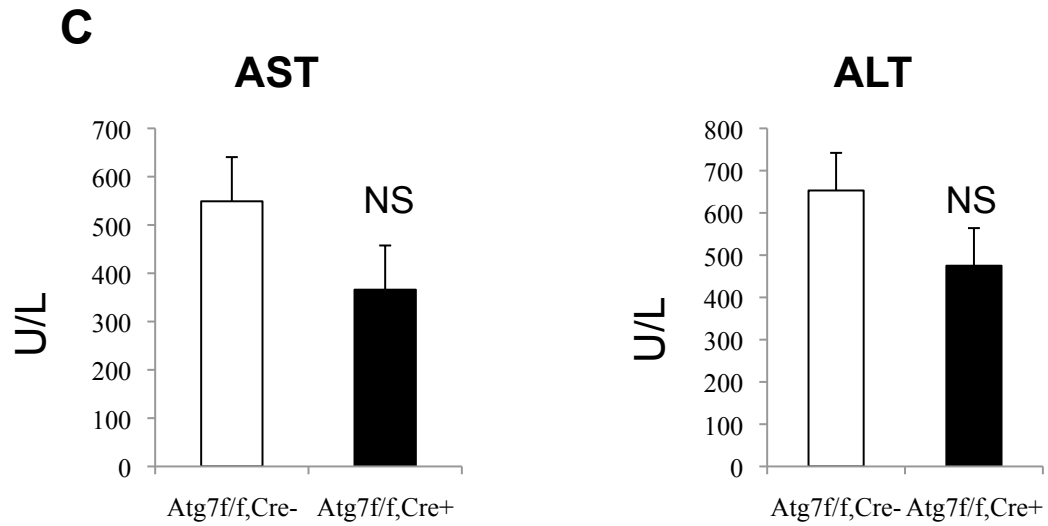
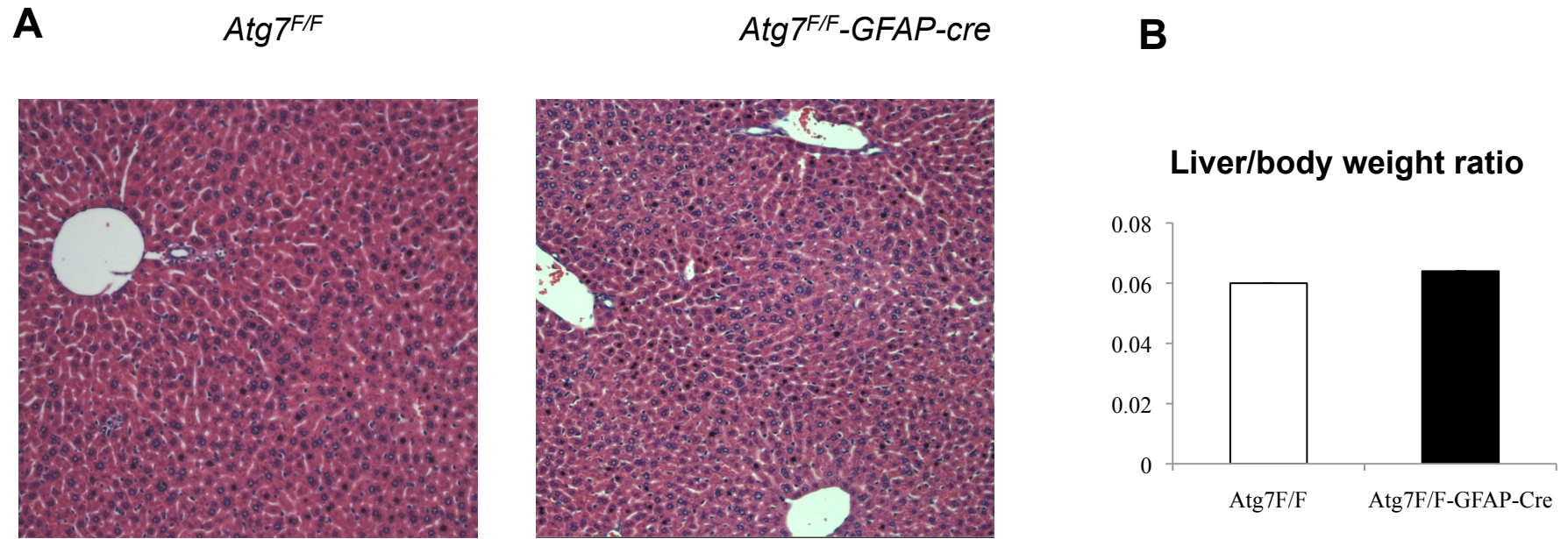
Supplemental Figure 7. Treatment with 3MA in human stellate cells and pulmonary fibroblasts decreases fibrogenesis

A**B****C**

Supplemental Figure 8. Embryonic fibroblasts from Atg5 KO mice have reduced fibrogenesis.

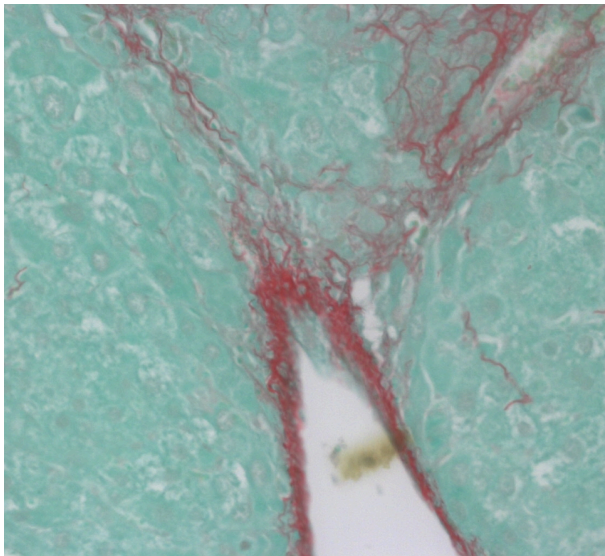


Supplemental Figure 9 . *Atg7^{F/F}-GFAP-Cre* mice characterization

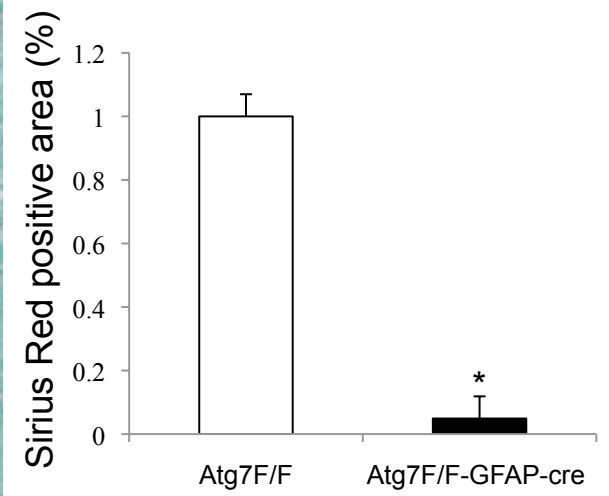
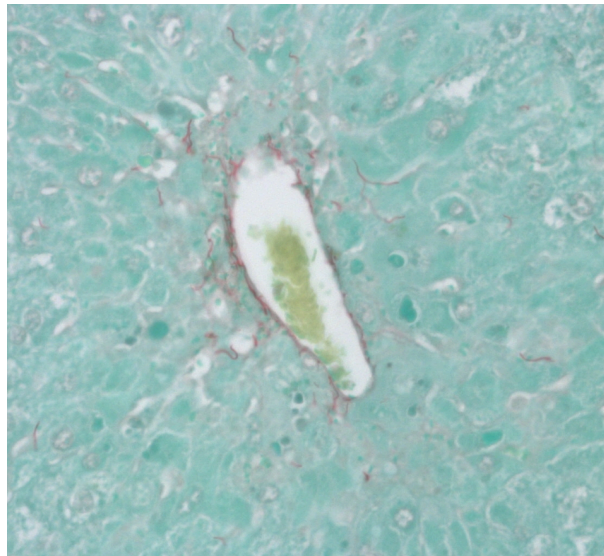


Supplemental Figure 10. Blocking autophagy in stellate cells does not amplify liver injury

Atg7^{F/F}

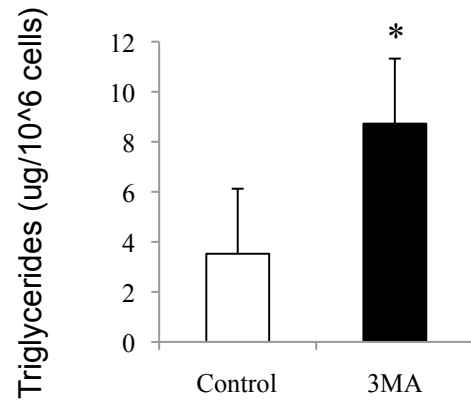


Atg7^{F/F}-GFAP-cre

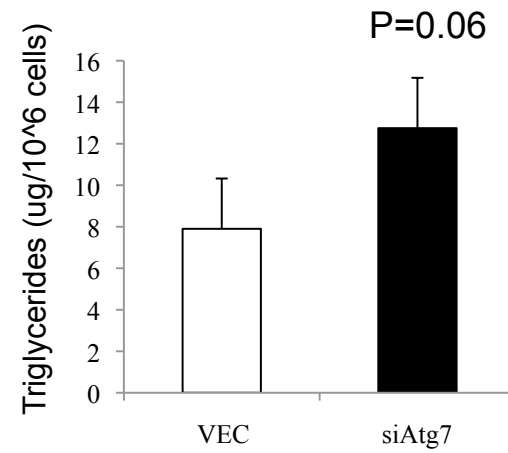


Supplemental Figure 11. . Autophagy regulates stellate cell activation and fibrosis in vivo

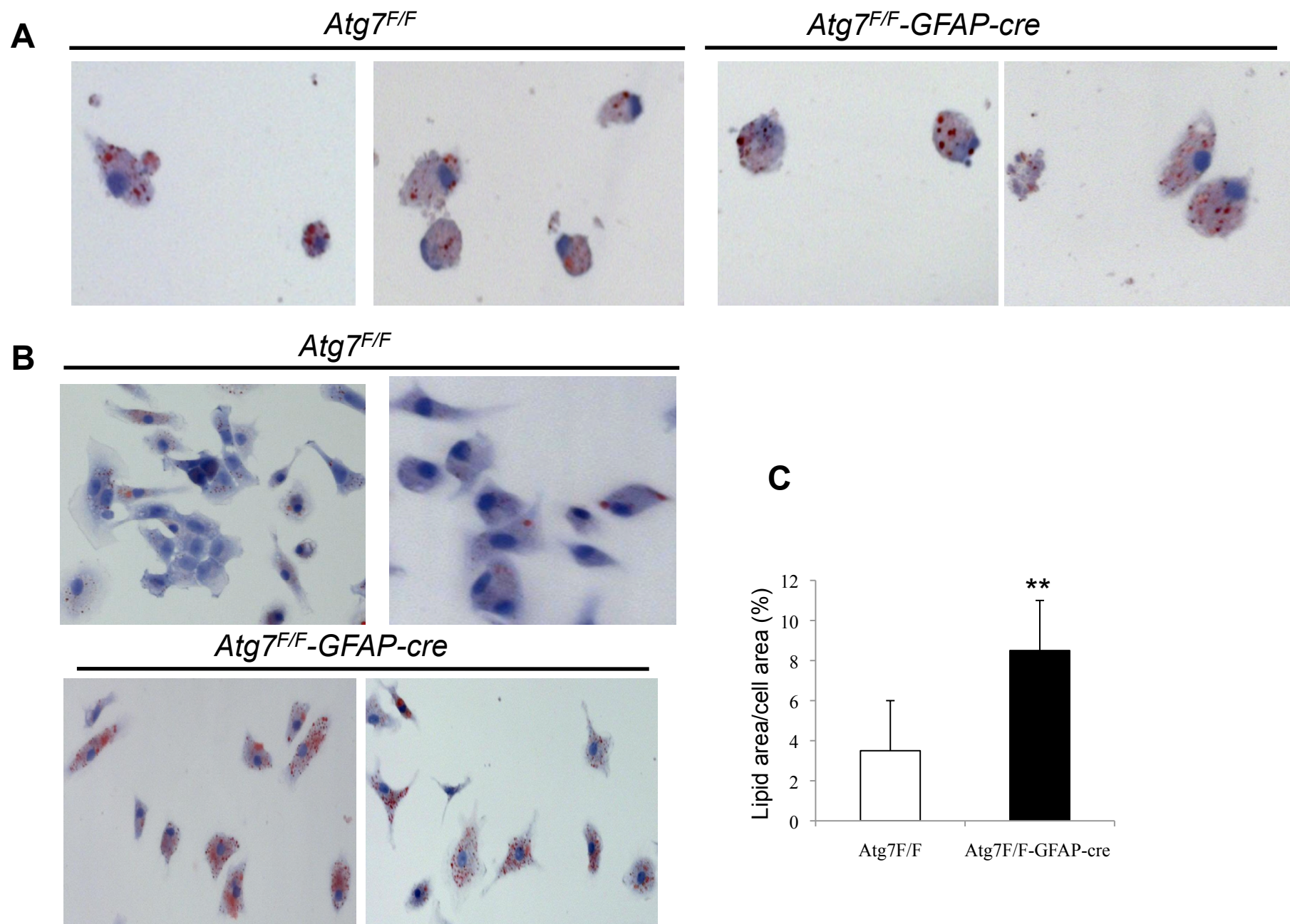
A



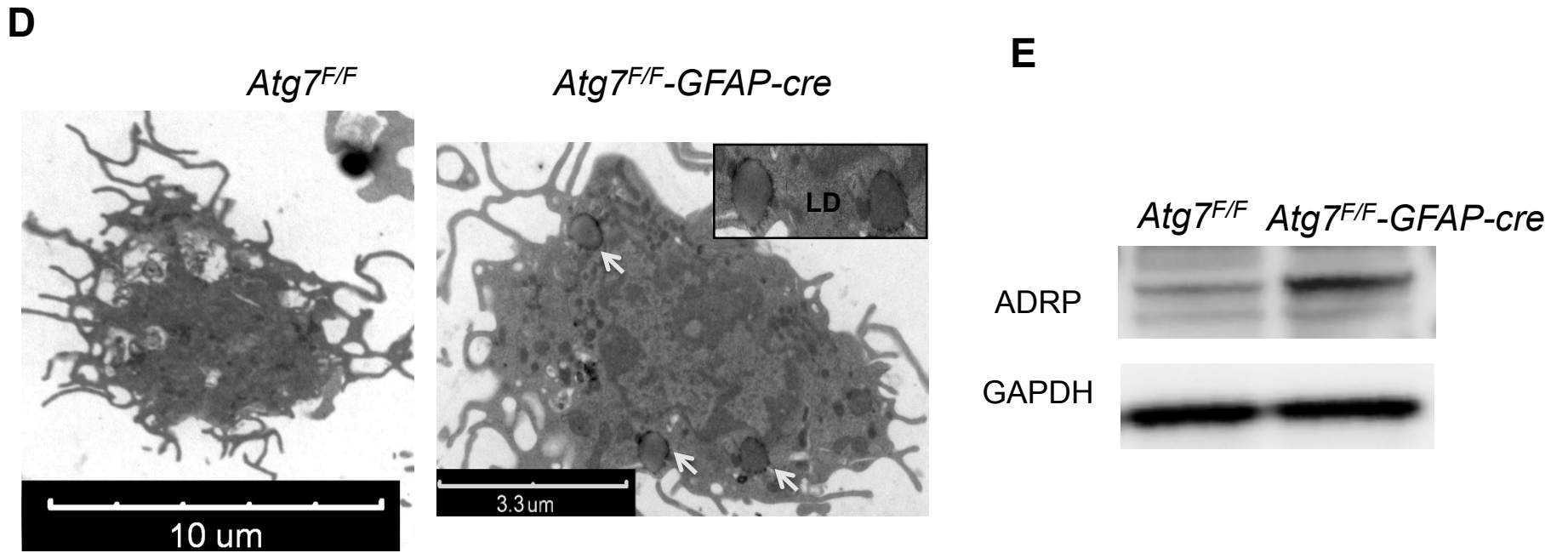
B



Supplemental Figure 12. Triglyceride content is increased in autophagy-deficient stellate cells



Supplemental Figure 13. Inhibition of autophagy in stellate cells leads to LD accumulation associated with increased expression of adipose differentiation related protein (ADRP).



Supplemental Figure 13. Inhibition of autophagy in stellate cells leads to LD accumulation associated with increased expression of adipose differentiation related protein (ADRP).