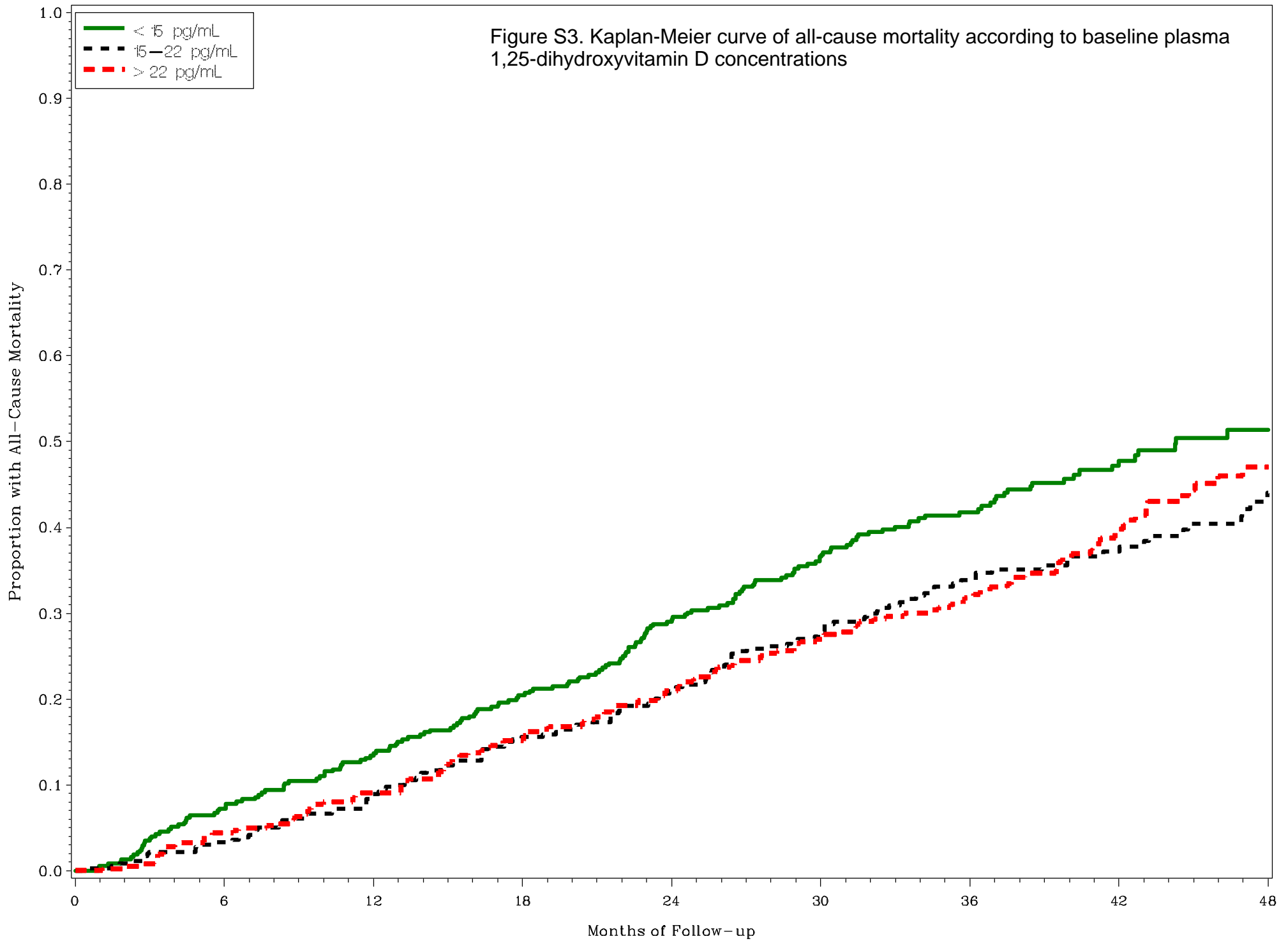


Figure S3. Kaplan-Meier curve of all-cause mortality according to baseline plasma 1,25-dihydroxyvitamin D concentrations



P-value for Log-rank test of equality over strata = 0.0090

Supplementary Figure S3; Kendrick et al, AJKD, "Associations of Plasma 25-Hydroxyvitamin D and 1,25-Dihydroxyvitamin D Concentrations With Death and Progression to Maintenance Dialysis in Patients With Advanced Kidney Disease"