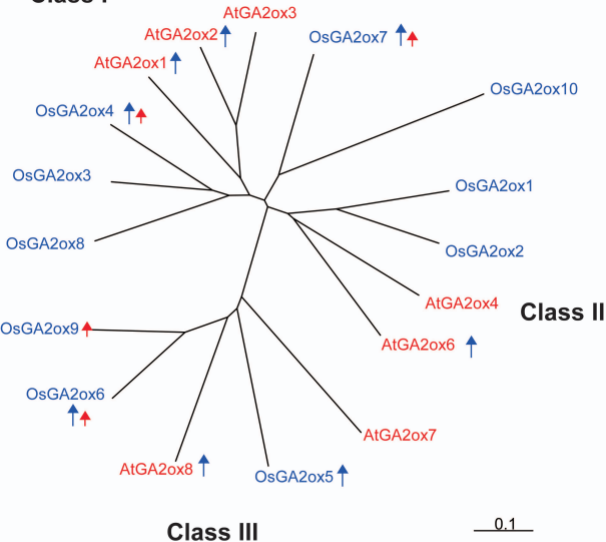
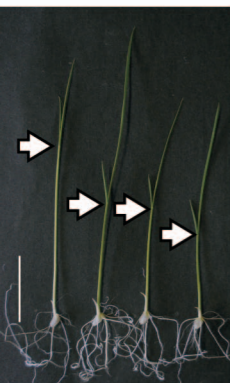


# Class I

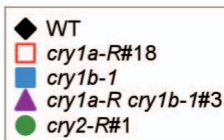
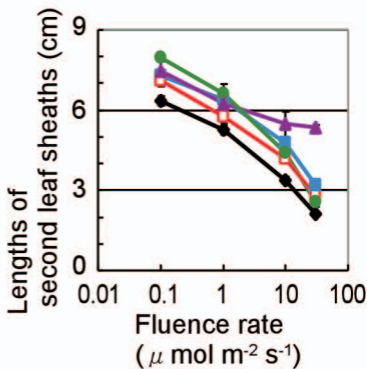


A



*cry1a-R*  
*cry1b-1*  
*cry1b-1*  
*cry2-R*  
 WT

B



Supplementary Fig. S3

Hirose, F. et al.

Supplemental Table S1 Primer sequence for screening of *cry* mutant

| name     | sequence                    |
|----------|-----------------------------|
| CRY-1stF | CAGATGGAAGTTGACCGAG         |
| CRY-2ndF | CGACGCGAGGATCAGATGGT        |
| CRY-1stR | CTCGGTCAACTTCCATCTG         |
| CRY-2ndR | TTCTTCCATTCCATTGTCCAT       |
| LTR1     | CAGTCCATTGGATCTTGTATCTTGTAT |
| LTR2     | GCTAATACTATTGTTAGGTTGC      |
| LTR4     | GCTGGACATGGGCCAACTAT        |
| LTR5     | CAGTACATTAGCTTGTATATATATTTA |

Supplemental Table S2 Primer sequence for amplification of GA biosynthesis, inactivation and signaling genes

| name       | sequence                      | reference              |
|------------|-------------------------------|------------------------|
| OsGA20ox1F | AATGAGCATGGTGGTGCAGCAGGAGCAG  | Sakamoto et al. (2004) |
| OsGA20ox1R | GTTAACCACCAGGAAGAAGCCGTGCCTC  |                        |
| OsGA20ox2F | AGACCCTCTCCTTCGGCTTC          | in this work           |
| OsGA20ox2R | CAGGAGTTCCATGATCGTCAG         |                        |
| OsGA20ox3F | GTGGAAGGAGACCATGTCGTTCAACTGC  | Sakamoto et al. (2004) |
| OsGA20ox3R | TCATCACGTCGCAGTACTCCTGGTACAC  |                        |
| OsGA20ox4F | GACGCTCTCCTTCGGCCAC           | in this work           |
| OsGA20ox4R | CGCCATTATCGCTTCGTCAC          |                        |
| OsGA3ox1F  | ATGGAGGAGTACGACTCGTCGATGAGAG  | Sakamoto et al. (2004) |
| OsGA3ox1R  | CTCTGCAGGATGAAGGTGAAGAAGCCTG  |                        |
| OsGA3ox2F  | GAAGCCCAGTCCGTGTGCGCGATG      | Iwamoto et al. (2009)  |
| OsGA3ox2R  | GACGACTACCTCCTTCTGTGACGTG     |                        |
| OsGA2ox1F  | CGAGCAAACGATGTGGAAGGGCTACAGG  | Sakamoto et al. (2004) |
| OsGA2ox1R  | TGGCTCAGGCGGAGTGAGTACATTGTCTG |                        |
| OsGA2ox2F  | CTGACAAGGCTCATCACAGC          | in this work           |
| OsGA2ox2R  | GAAGTAGATGGTCGACAGCCTC        |                        |
| OsGA2ox3F  | TTCTTCGTCAACGTCGGCGACTCGTTGC  | Sakamoto et al. (2004) |
| OsGA2ox3R  | TCTCAAACGGGCCAGCCTGTTGTCTCC   |                        |
| OsGA2ox4F  | GCGTGCGAGAGGTTTGGGTTCTTCAAGG  | Sakamoto et al. (2004) |
| OsGA2ox4R  | CTCCGCCACCATCTCCAGCACCGTCC    |                        |
| OsGA2ox5F  | CTCATTTCGATGAATCGCAG          | in this work           |
| OsGA2ox5R  | CCTGCATGCGCCTTAATCAAT         |                        |
| OsGA2ox6F  | TCGTCAACATCGGCGATCTG          | in this work           |
| OsGA2ox6R  | CATATATAGAACAAGCGGTTGCTG      |                        |
| OsGA2ox7F  | GAGATCTCCCTCCGTGACG           | in this work           |
| OsGA2ox7R  | GCTAGAGGCAAACCACAGTGAT        |                        |
| OsGA2ox8F  | GATCGATCTATCCTTGTGTTG         | in this work           |
| OsGA2ox8R  | CATGCAGGAGGAGGCAGCTC          |                        |
| OsGA2ox9F  | GATGTGCGAGGCTGGCCAG           | in this work           |
| OsGA2ox9R  | GGAAGTAGGCGACGGAGTATCT        |                        |
| OsGA2ox10F | CTCCGATCCAACGACACCTCT         | Lo et al. (2008)       |
| OsGA2ox10R | AGCCAGCGCCTCGTCCTGAT          |                        |
| SLR1F      | CTGGAGCAGCTGGAGATGG           | Iwamoto et al. (2009)  |
| SLR1R      | GATGCCGAAGTCGACGACG           |                        |
| GID1F      | CAGCGACGAGGTCAACCGCAACGAG     | Iwamoto et al. (2009)  |
| GID1R      | CTGGCGCGTCCGTCAGGAACCTCAAG    |                        |
| GID2F      | GATCTCGGGGAGGACCTGCTGTTC      | Iwamoto et al. (2009)  |
| GID2R      | CTTGTTGGAGTGAAGCTATTCCAC      |                        |

Iwamoto, M., Higo, K. and Takano, M. (2009) Circadian clock- and phytochrome-regulated Dof-like gene, Rdd1, is associated with grain size in rice. *Plant Cell Environ.* 32: 592-603.

Lo, S.F., Yang, S.Y., Chen, K.T., Hsing, Y.I., Zeevaart, J.A., Chen, L.J. and Yu, S.M. (2008) A novel class of gibberellin 2-oxidases control semidwarfism, tillering, and root development in rice. *Plant Cell* 20: 2603-2618.

Sakamoto, T., Miura, K., Itoh, H., Tatsumi, T., Ueguchi-Tanaka, M., et al. (2004) An overview of gibberellin metabolism enzyme genes and their related mutants in rice. *Plant Physiol.* 134: 1642-1653.