

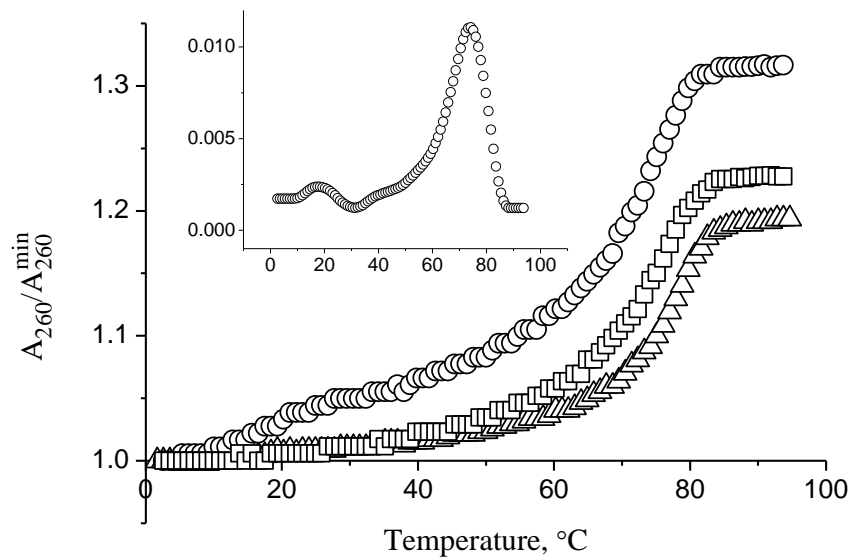
Supplementary Table ST1. Microarray hybridisation data.

<i>h1</i>				<i>h2</i>			
0.059	0.010	0.328	0.313	0.012	0.048	0.178	0.178
-0.086	-0.075	0.071	-0.038	-0.103	-0.072	-0.014	-0.026
0.015	0.072	0.066	0.111	-0.025	0.012	0.032	0.108
<i>h3</i>				<i>h4</i>			
0.096	0.071	0.767	0.652	0.075	0.060	0.311	0.345
-0.071	-0.059	0.103	0.133	-0.066	-0.072	0.054	0.181
0.082	0.223	-0.053	-0.073	0.052	0.158	-0.051	-0.066
<i>h5</i>				<i>h6</i>			
0.035	-0.013	0.090	0.076	-0.014	-0.002	0.093	0.090
-0.028	-0.041	0.030	0.090	-0.042	-0.052	-0.007	-0.030
0.454	-0.010	0.051	-0.006	0.032	1.562	-0.009	-0.022

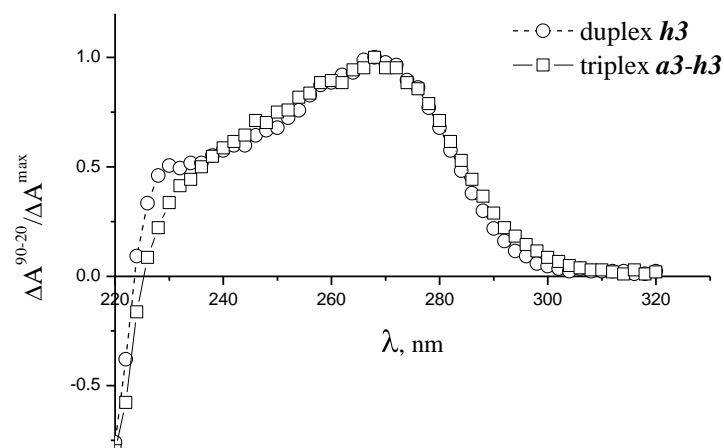
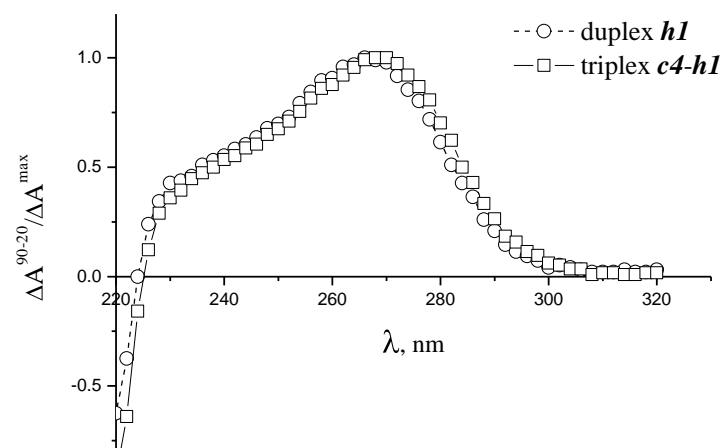
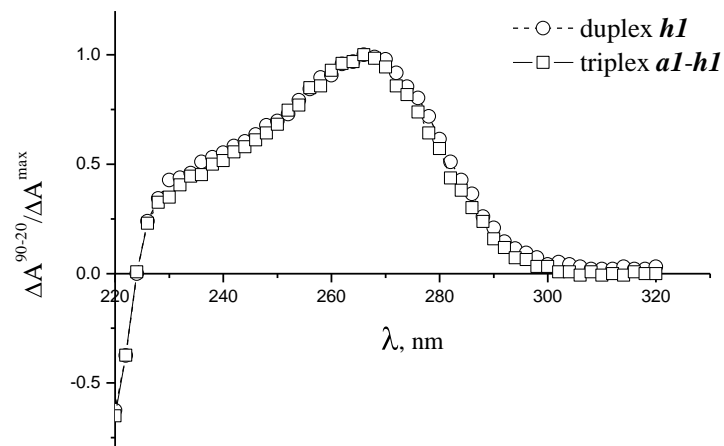
Supplementary Table ST2. Triplex formation by probes *a1-a4* and *b1-b4* with hairpins *h1-h4*.
Quantitation of triplex bands (%) in non-denaturing PAGE.

	<i>a1</i>	<i>a2</i>	<i>a3</i>	<i>a4</i>	<i>b1</i>	<i>b2</i>	<i>b3</i>	<i>b4</i>
<i>h1</i>	70	63	68	23	0	5	49	6
<i>h2</i>	58	92	62	br*	0	0	83	0
<i>h3</i>	9	13	62	85	8	7	6	7
<i>h4</i>	4	8	98	96	12	11	20	15

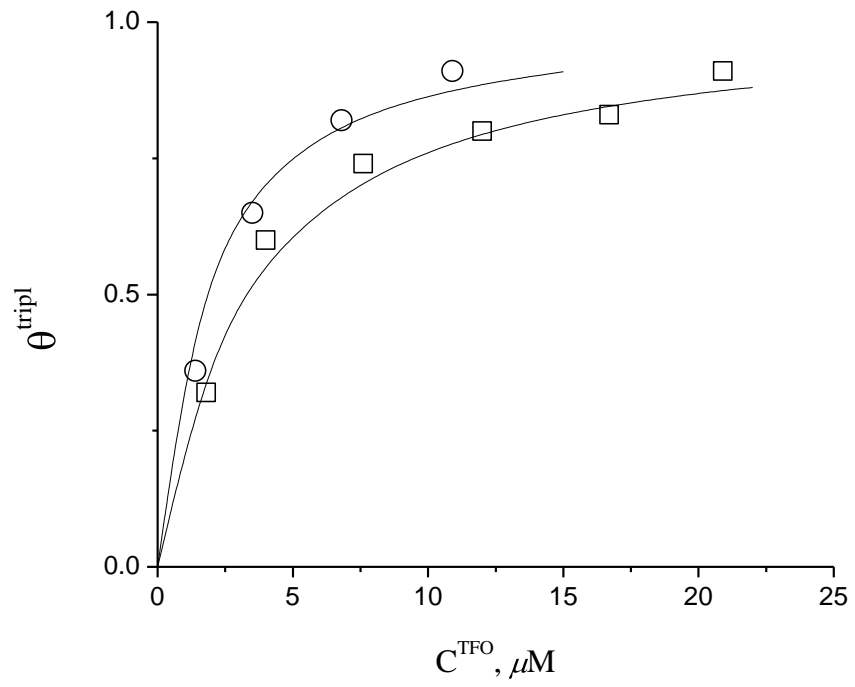
* broad unresolved band



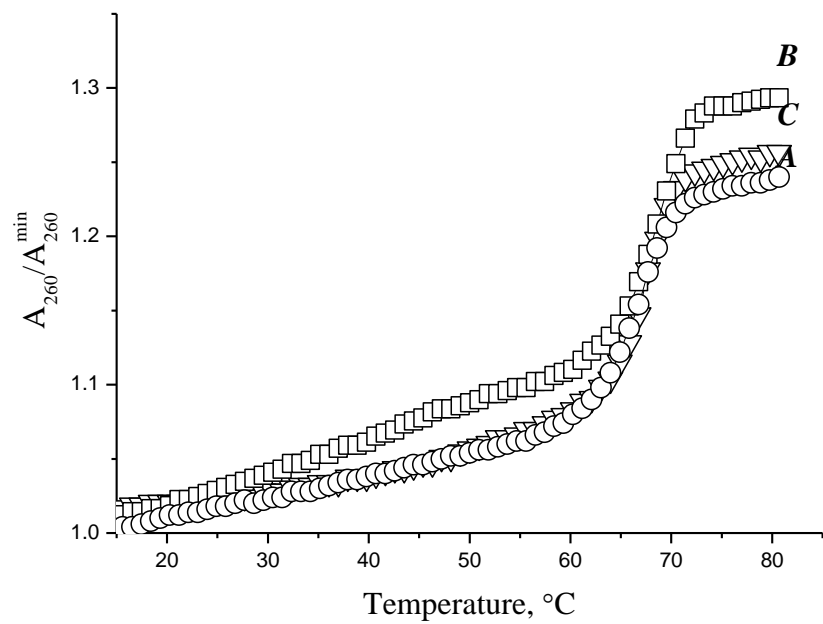
Supplementary Figure SF1. UV melting profiles of chimeric triplexes *a1-h1* (circles), *c4-h1* (squares) and *a3-h3* (triangles) in 0.1 M TBE and 30 mM MgCl₂ and a plot of the first derivative for triplex *a1-h1*.



Supplementary Figure SF2. Normalized thermal difference spectra (90 vs. 20°C) for triplexes *a1-h1*, *c4-h1* and *a3-h3* and underlying duplexes *h1* and *h3*.



Supplementary Figure SF3. Binding curves for triplex **A** (circles) and for mixed triplex **A**^{dupl}**B**^{TFO} (squares).



Supplementary Figure SF4. UV melting profiles of chimeric triplexes **A**, **B** and **C** in 0.1 M TBE and 30 mM MgCl₂.