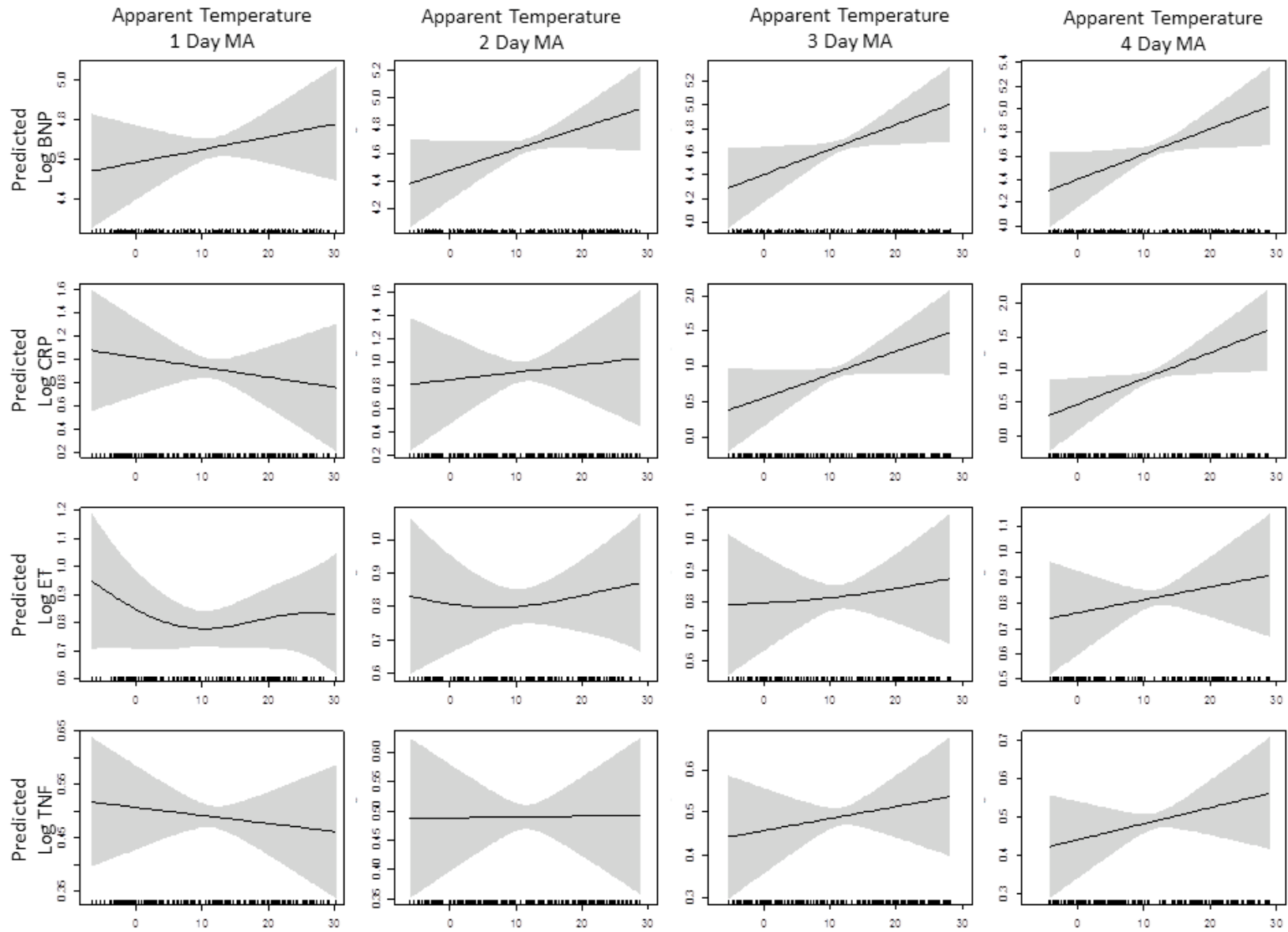


**Supplemental Material****Ambient Temperature and Biomarkers of Heart Failure: A Repeated Measures Analysis**

Elissa H. Wilker<sup>1,2</sup>, Gloria Yeh<sup>3</sup>, Gregory A. Wellenius<sup>4</sup>, Roger B. Davis<sup>3</sup>, Russell S. Phillips<sup>3</sup>  
Murray A. Mittleman<sup>1,2</sup>

## Supplemental Material, Figure S1



**Legend**

Penalized spline representations of the association between each study biomarker and moving averages (MA) of apparent temperature. In each plot the solid line denotes the fitted spline term for the mean predicted value of the biomarker as a function of apparent temperature (x-axis, in °C). The shaded areas denote the 95% confidence intervals for the smoothed term. These plots indicate that there was no evidence of statistically significant departures from linearity for the association between any of the study biomarkers and apparent temperature. ET= Endothelin-1; TNF=Tumor Necrosis Factor.