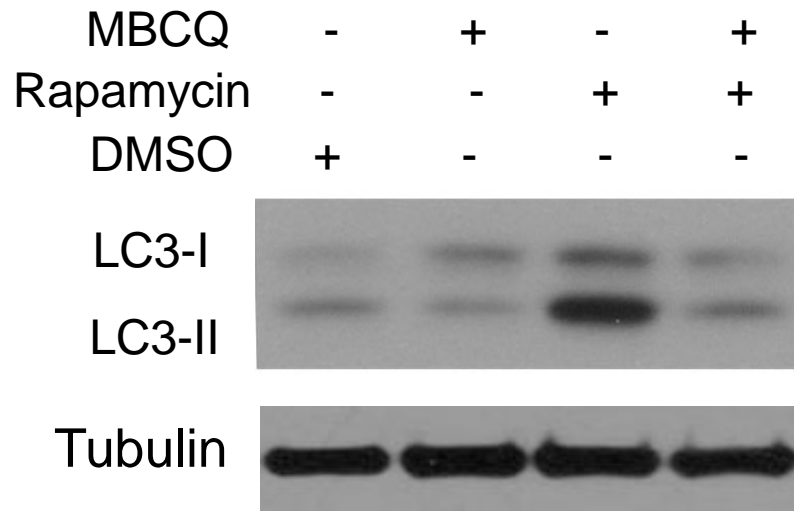
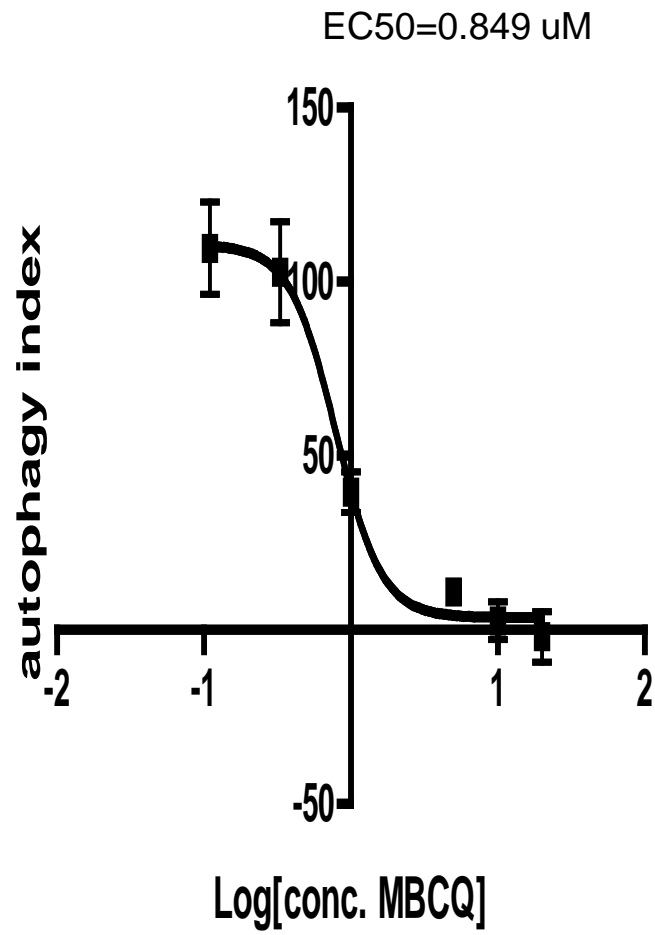


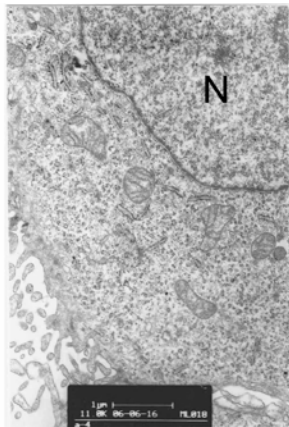
1A



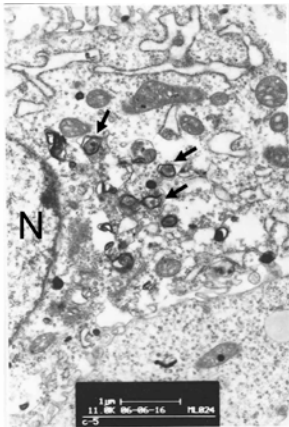
1B



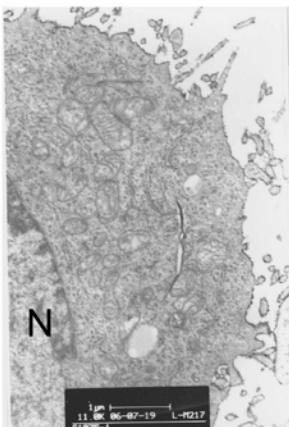
1C



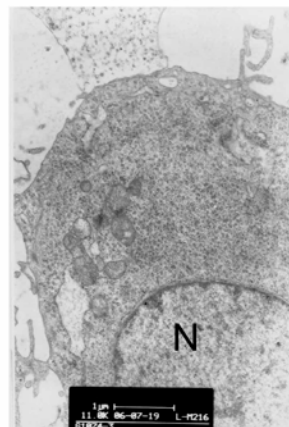
DMSO



Rapamycin



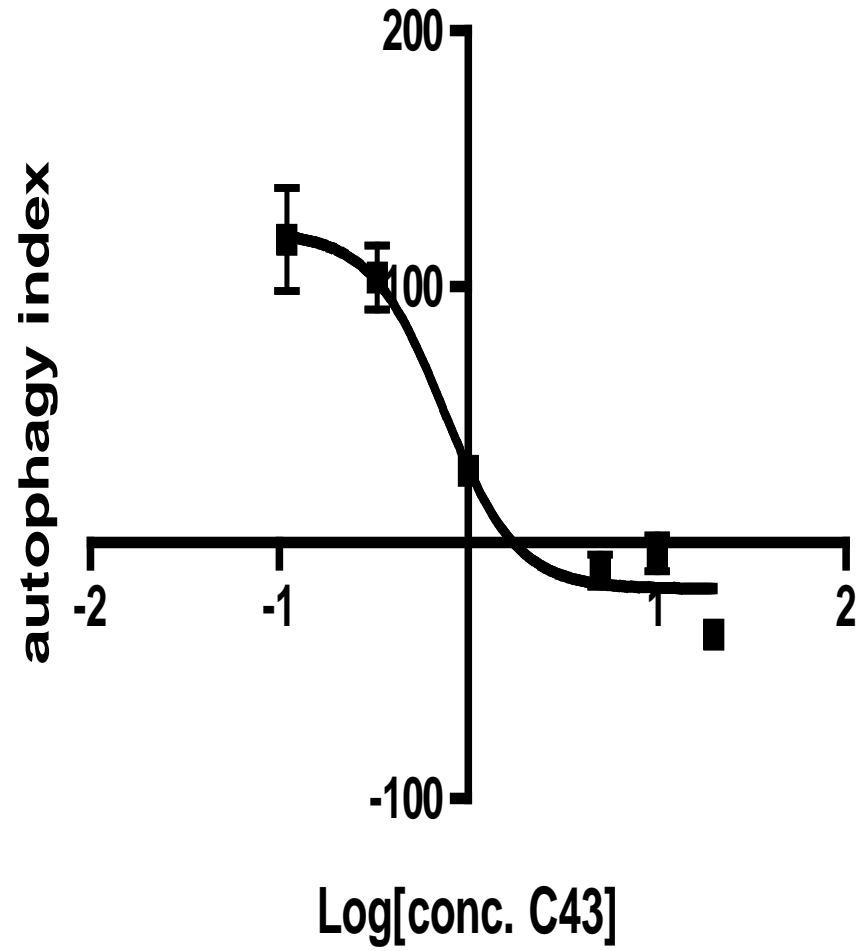
MBCQ



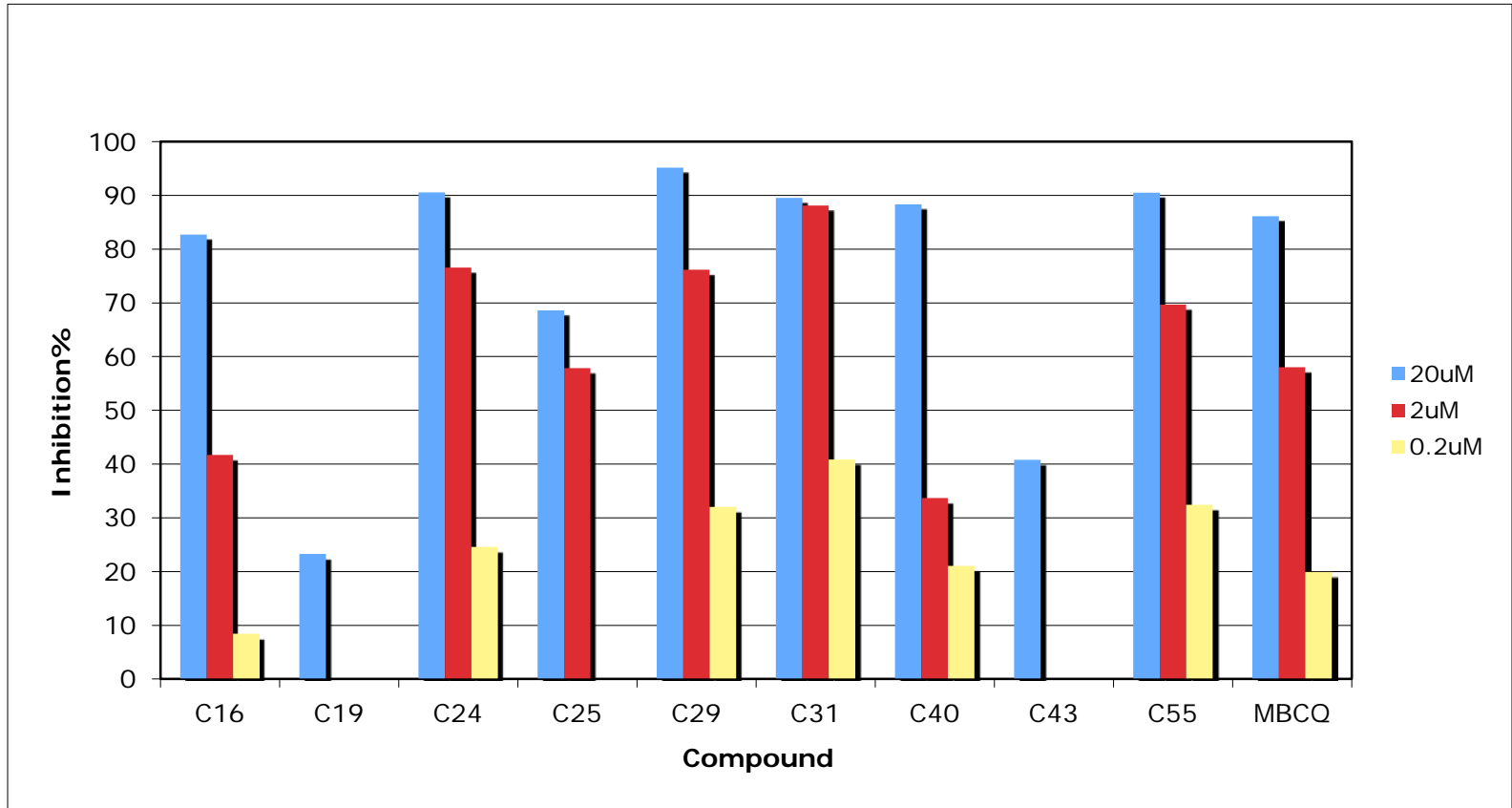
Rapamycin+MBCQ

1D

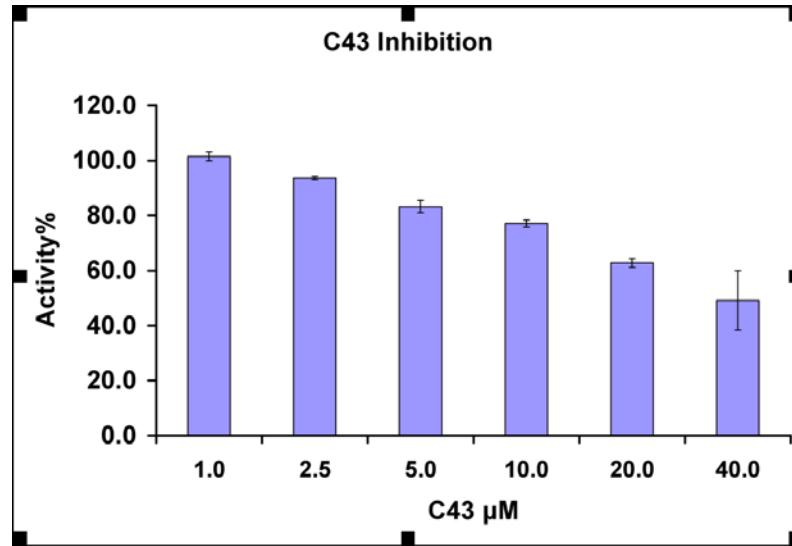
EC50=0.744 (uM)



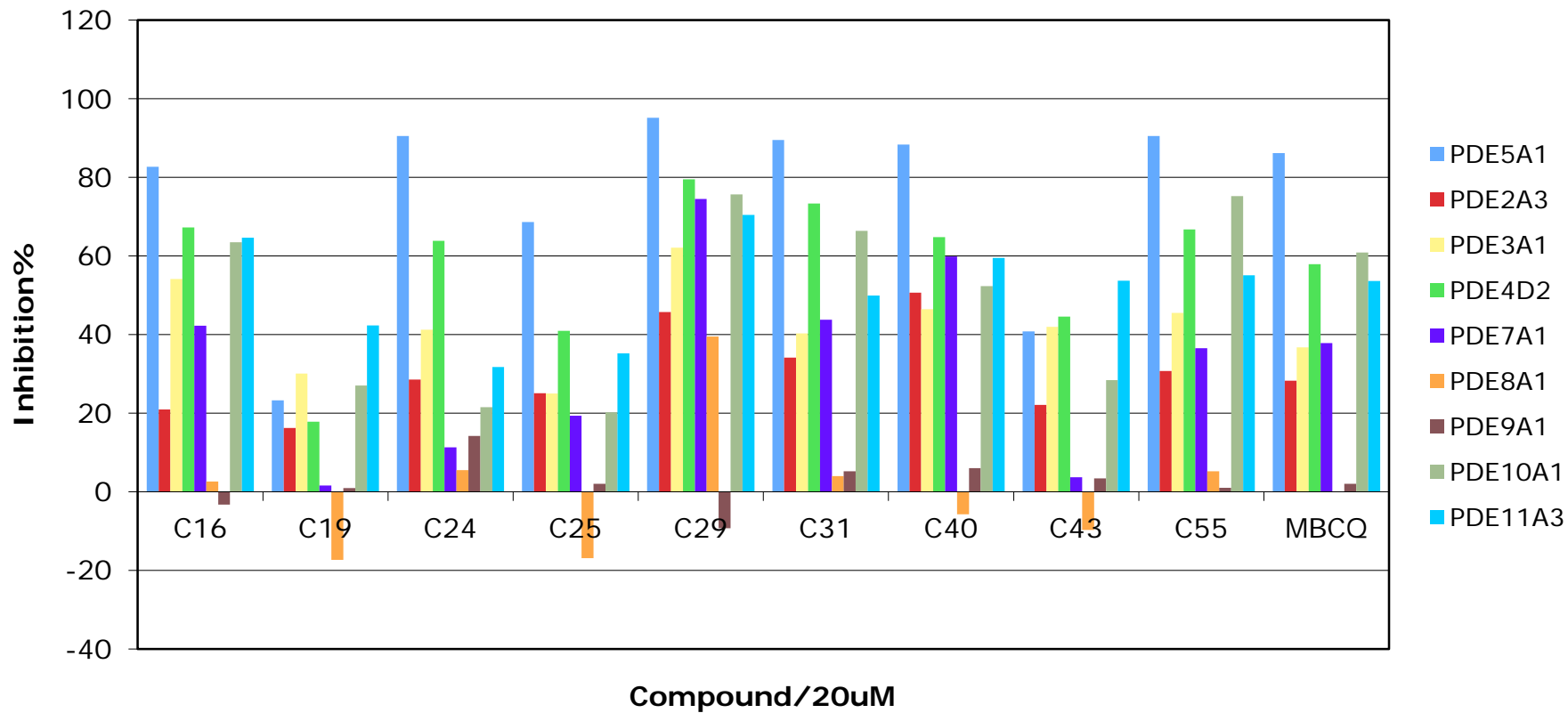
2A



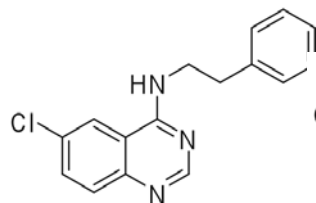
2B



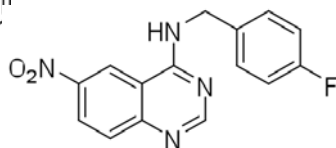
2C



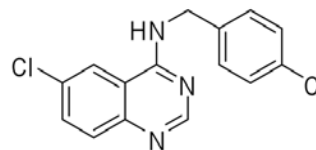
2D



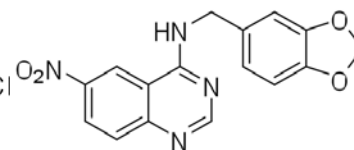
C16
EC₅₀(μ M) 0.79



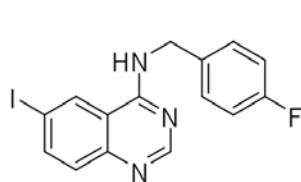
C24
0.28



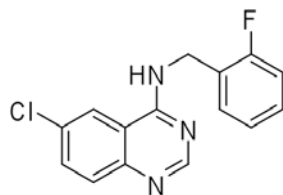
C25
0.36



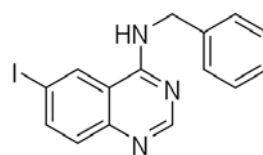
C29
Inactive



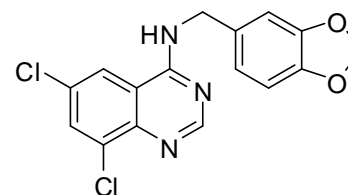
C31
EC₅₀(μ M) 0.66



C40
0.88

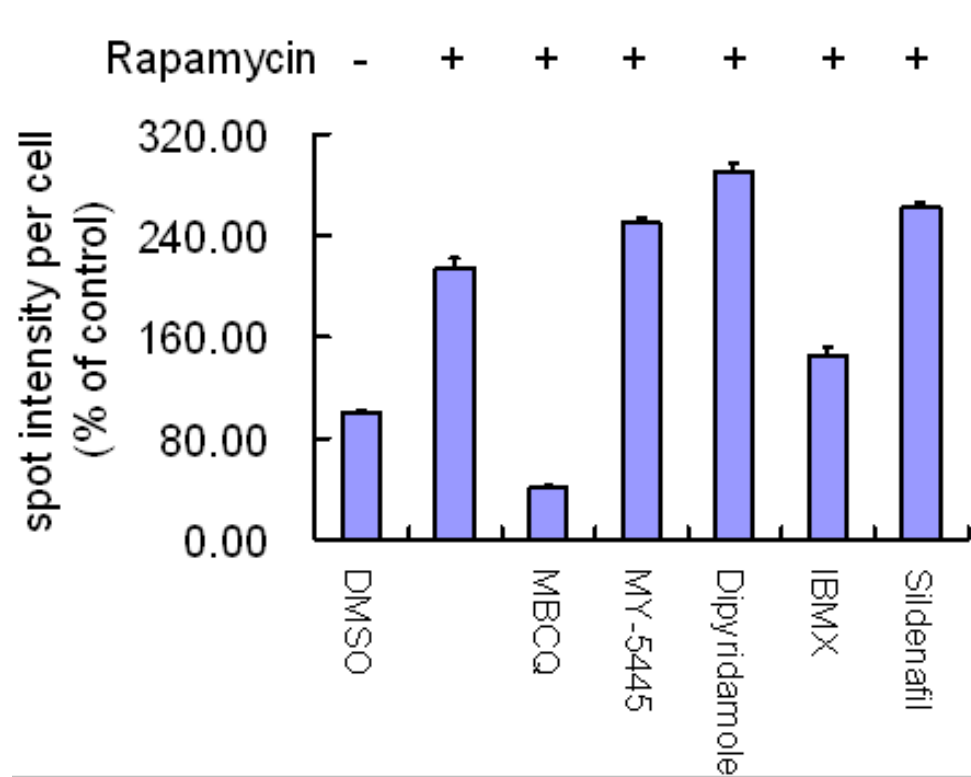


C55
0.23

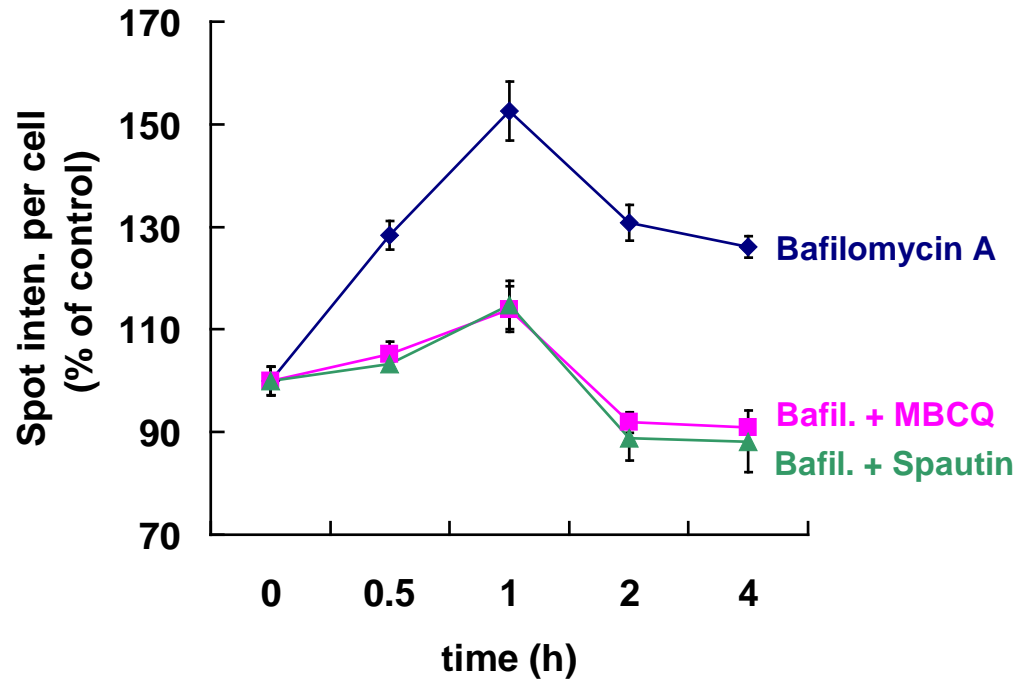


C19
Inactive

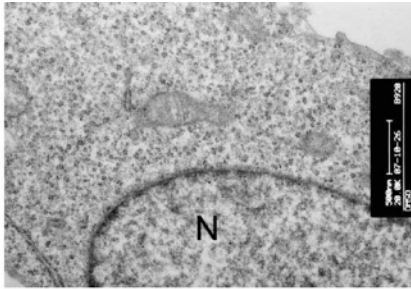
2E



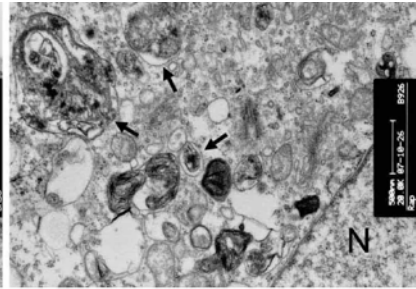
3A



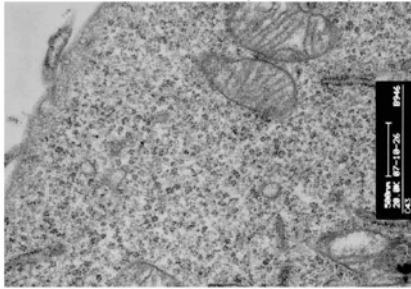
3B



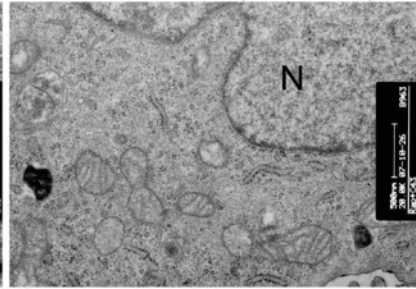
DMSO



Rapamycin

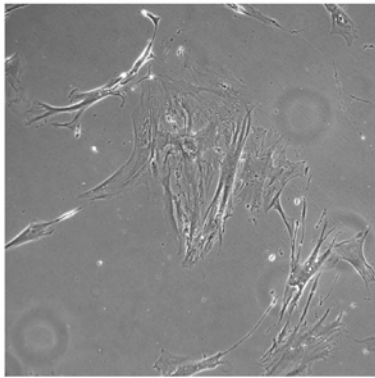


Spautin

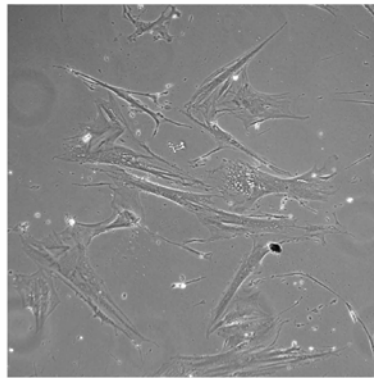


Rapamycin + Spautin

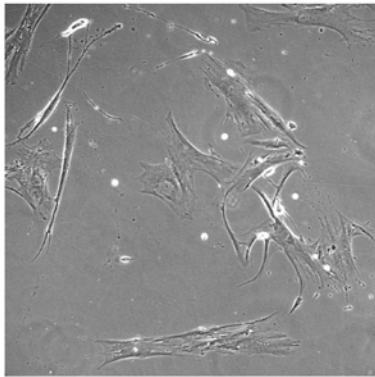
4A



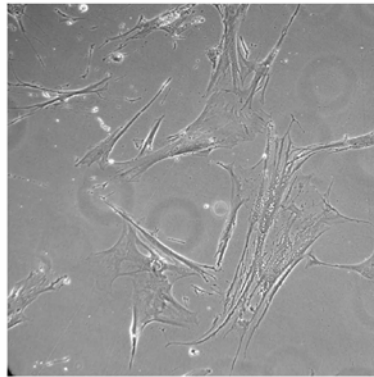
DMSO



Spautin

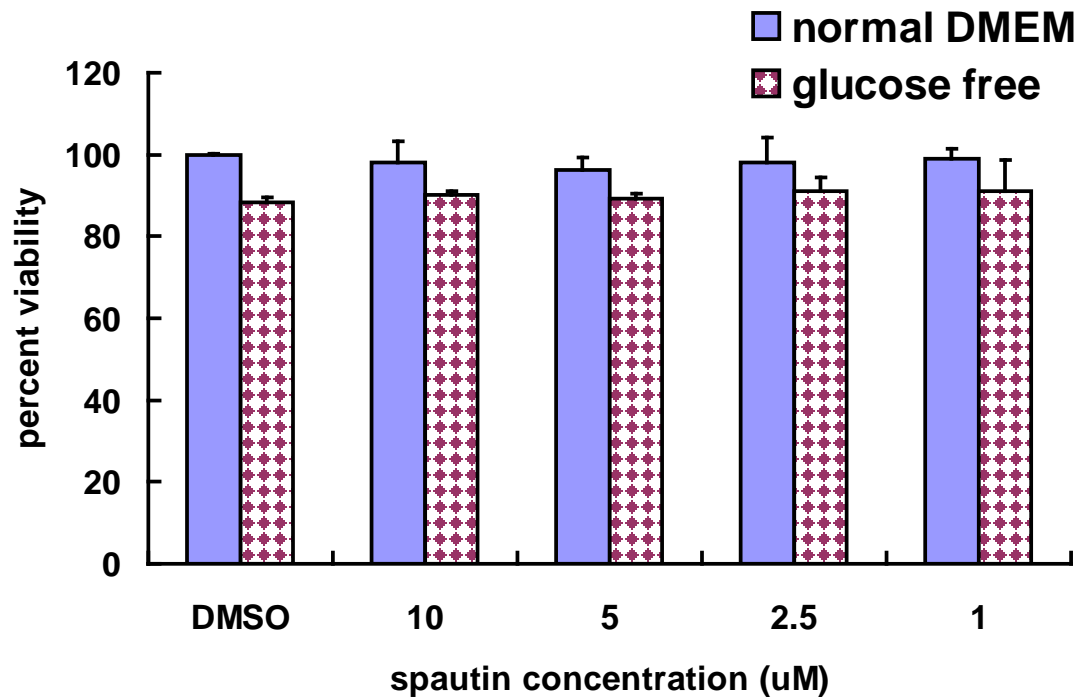


DMSO
glucose free

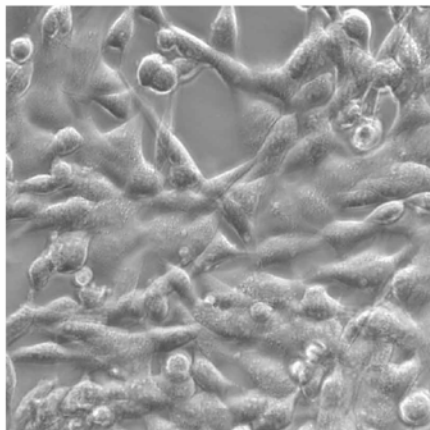


Spautin
glucose free

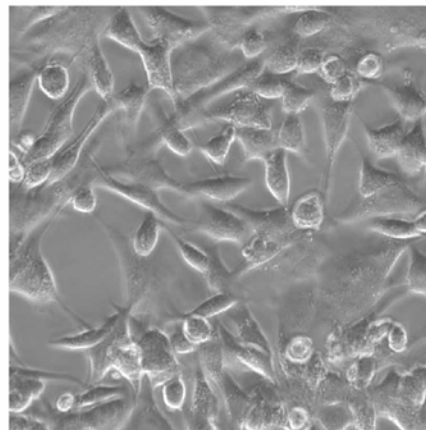
4B



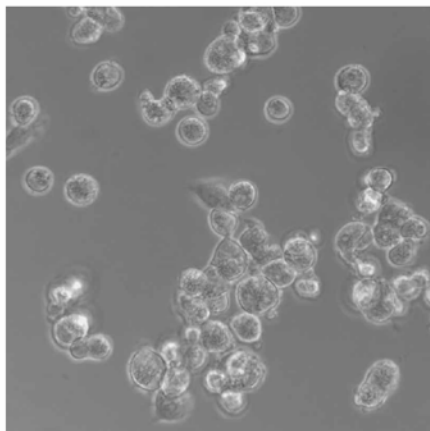
4C



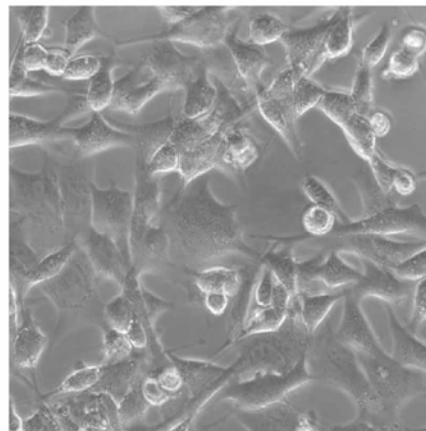
DMSO



Spautin



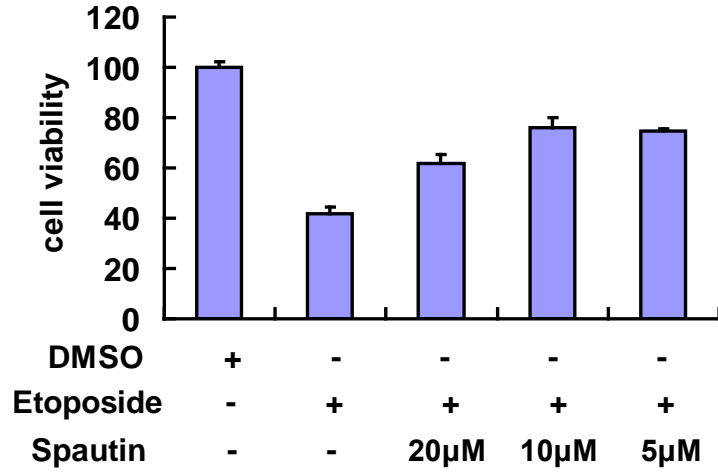
Etop.



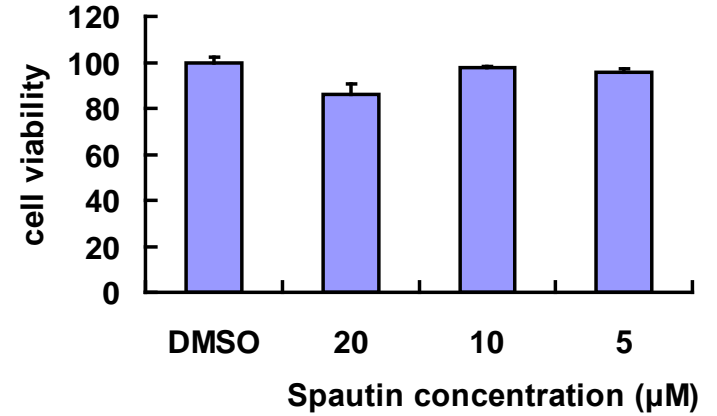
Etop. + Spautin

4D

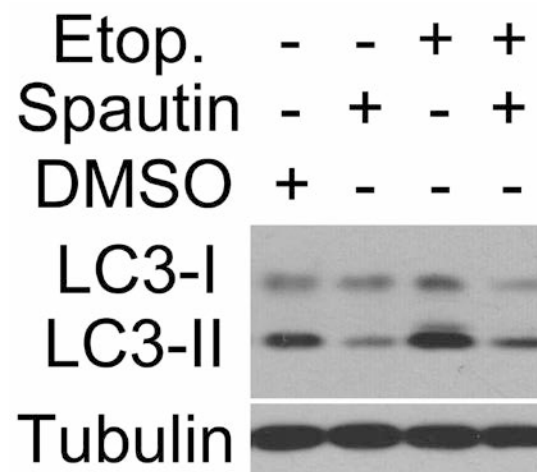
MTT assay of DKO-MEFs



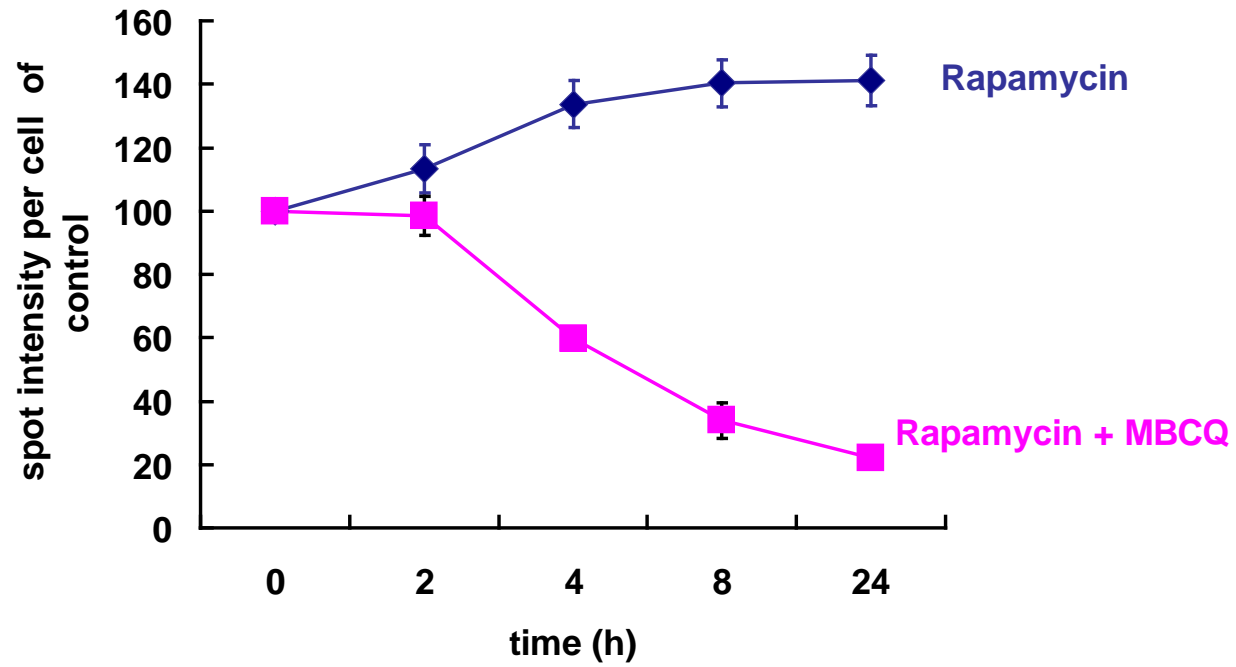
MTT assay of DKO-MEFs



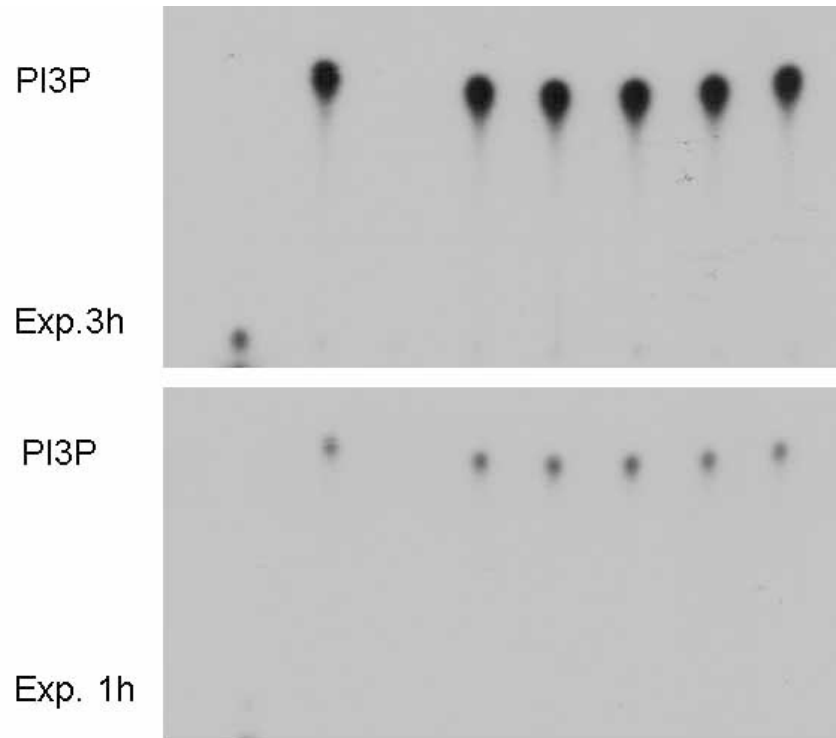
4E



5A



5B



	1	2	3	4	5	6	7	8
Flag-Vps34/GFP-Beclin-1	-	+	+	+	+	+	+	+
Wartmannin(10uM)	-	-	+	-	-	-	-	-
Spautin (uM)	-	-	-	10	1	0.1	0.01	0.001

Please correct for spelling: wortmannin, uM, and spautin-1

5C

GFP	+	+	+
MBCQ	-	+	-
Spautin	-	-	+
DMSO	+	-	-

Anti-GFP

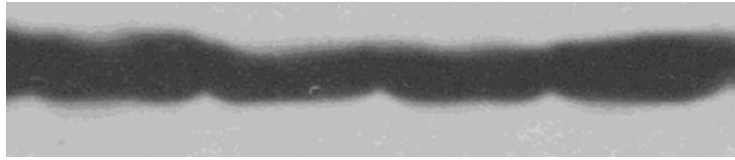


Tubulin



5D	GFP-Arf1	+	+	+	+
	MBCQ	-	-	-	-
	Spautin	-	-	-	+
	Rap	+	+	+	+
	DMSO	+	-	-	-

Anti-GFP



Tubulin



5E

GFP-MT

+

+

+

+

MBCQ

-

-

-

-

Spautin

-

-

-

+

Rap

+

+

+

+

DMSO

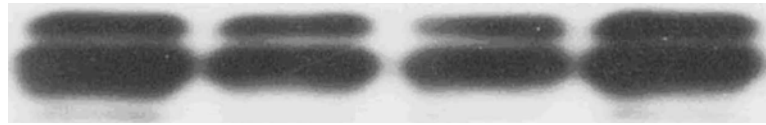
+

-

-

-

Anti-GFP



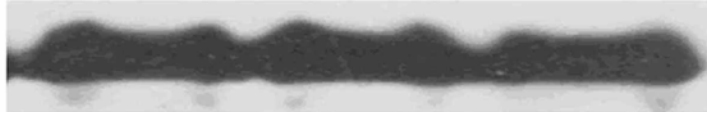
Tubulin



5F

HA-Hrs	+	+	+
MBCQ	-	+	-
Spautin	-	-	+
DMSO	+	-	-

Anti-HA



Tubulin



5G

GFP-Atg3	+	+	+
MBCQ	-	+	-
Spautin	-	-	+
DMSO	+	-	-

Anti-GFP

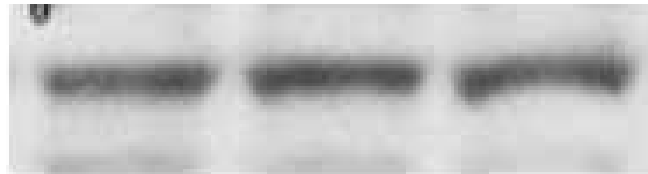


Tubulin

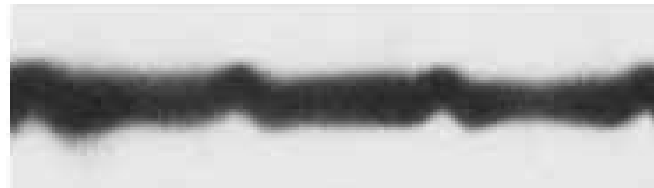


5H	HA-Atg7	+	+	+
	MBCQ	-	+	-
	Spautin	-	-	+
	DMSO	+	-	-

Anti-HA



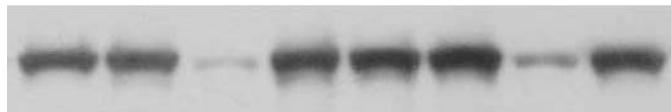
Tubulin



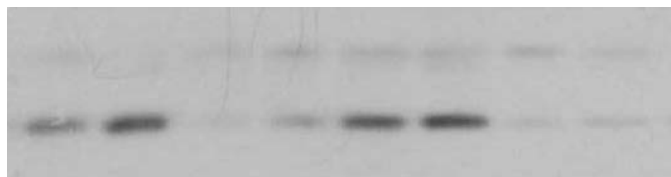
5I

3-MA	-	-	-	+	-	-	-	+
Spautin	-	-	+	-	-	-	+	-
Rap	-	+	+	+	-	+	+	+
DMSO	+	-	-	-	+	-	-	-

Beclin1



LC3-I



LC3-II



Tubulin



6

GFP-Beclin1	+	+	+	+
NH4Cl	-	-	-	+
MG132	-	-	+	-
Spautin	-	+	+	+
DMSO	+	-	-	-

