

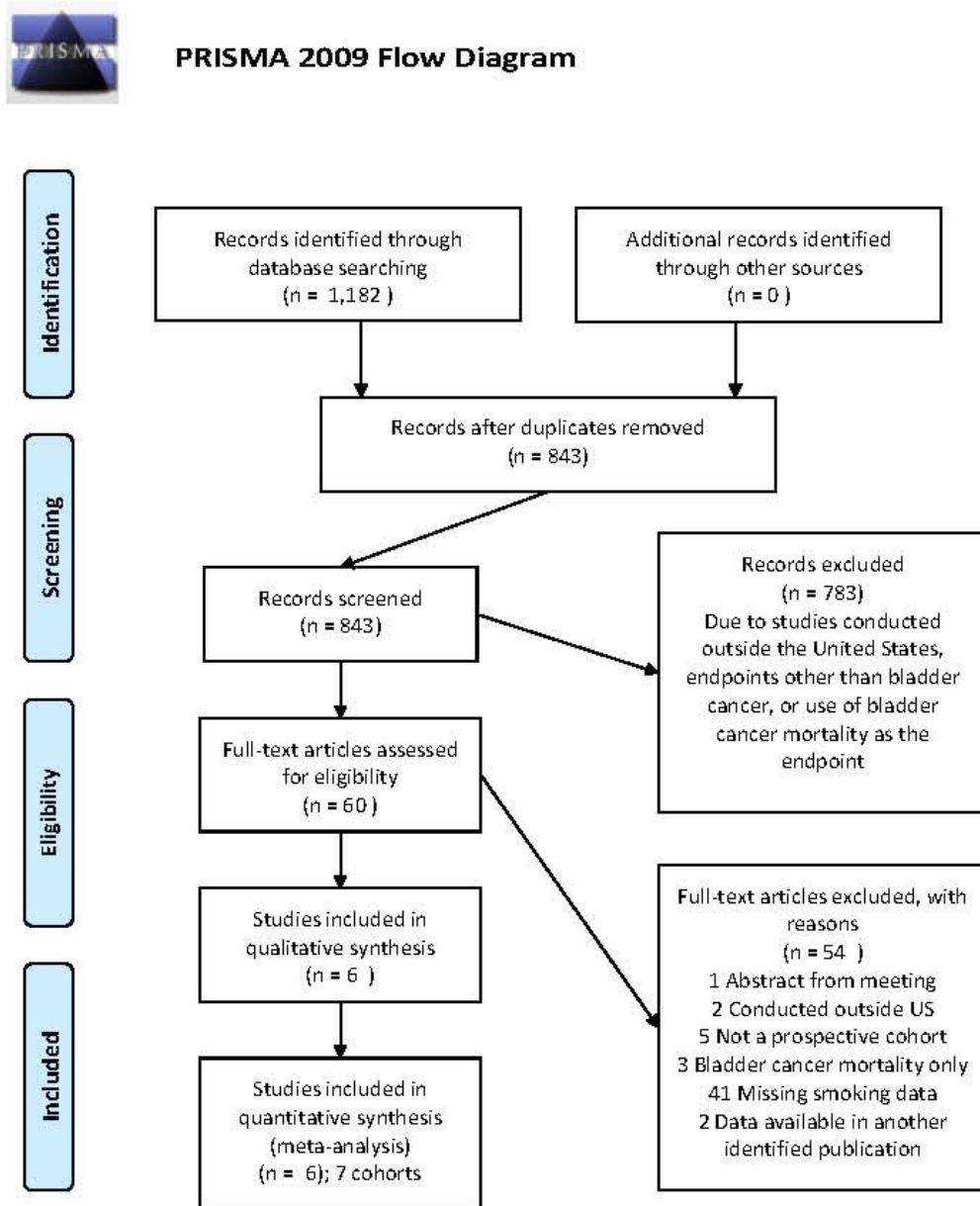
## Supplementary Online Content

Freedman ND, Silverman DT, Hollenbeck AR, Schatzkin A, Abnet CC. Association between smoking and risk of bladder cancer among men and women. *JAMA*. 2011;306(7):737-745.

**eFigure.** PRISMA Flow Diagram for Systematic Review of Previous US Prospective Cohort Studies for the Association of Current Smoking With Incident Bladder Cancer

This supplementary material has been provided by the authors to give readers additional information about their work.

**eFigure.** PRISMA Flow Diagram for Systematic Review of Previous US Prospective Cohort Studies for the Association of Current Smoking With Incident Bladder Cancer



From: Moher D, Liberati A, Tetzlaff J, Altman DG, The PRISMA Group (2009). Preferred Reporting Items for Systematic Reviews and Meta-Analyses: The PRISMA Statement. PLoS Med 6(6): e1000097. doi:10.1371/journal.pmed1000097

For more information, visit [www.prisma-statement.org](http://www.prisma-statement.org).