

Supplemental figure S1

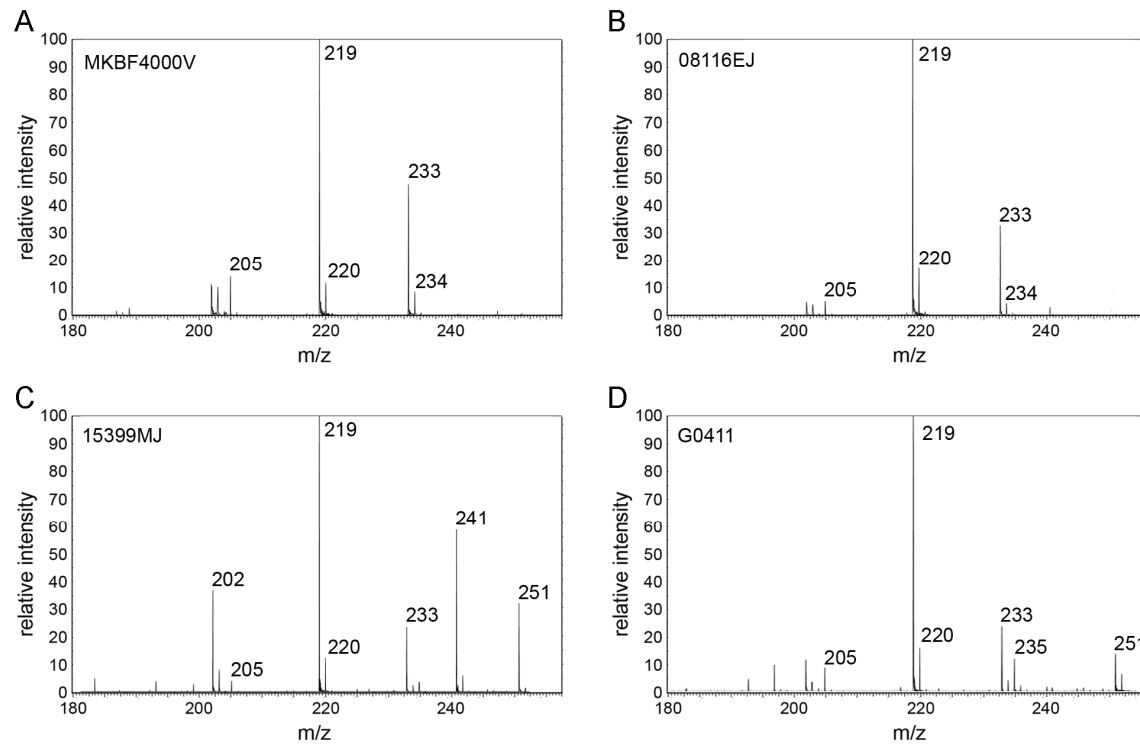


Figure S1. MS Analysis of different 1-L-MT lots dissolved in tryptophan-free cell culture medium. Exemplary spectra of the lots (A) MKBF4000V, (B) 08116EJ, (C) 15399MJ (all derived from Sigma Aldrich, St. Louis, USA) and (D) G0411 (derived from Santa Cruz Biotechnology Inc., Santa Cruz, USA). Additional to 1-L-MT with the m/z of 219, all lots also contain tryptophan with the m/z of 205.