

Supplemental figure S4

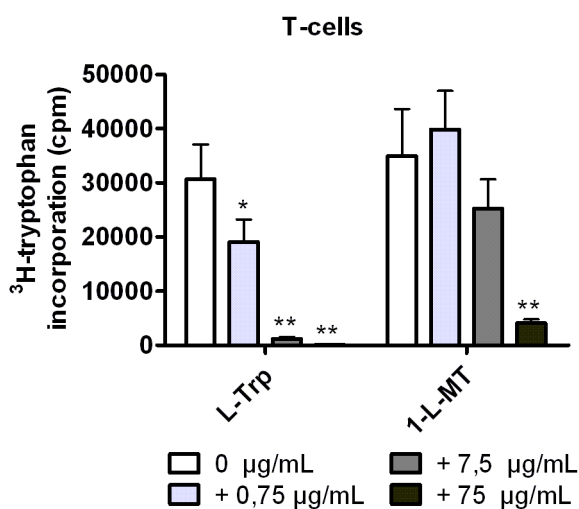


Figure S4. Competitive replacement of [³H] L-tryptophan by unlabelled L-tryptophan and 1-L-MT in human T cells. OKT3-stimulated T cells were cultured in conditioned, tryptophan-free cell culture medium containing 0,75 µg/mL [³H] L-tryptophan and additional L-tryptophan and 1-L-MT (0-75 µg/mL each). The [³H] L-tryptophan was detected by liquid scintillation spectrometry. Its incorporation into T cells was significantly decreased in a concentration-dependent way, when it was competitively replaced by unlabelled L-tryptophan and 1-L-MT. Data are given as [³H]-tryptophan incorporation, measured by liquid scintillation spectrometry, +/- SEM of four independent experiments with each experiment performed in triplicates.