

Fig.1B coomassie

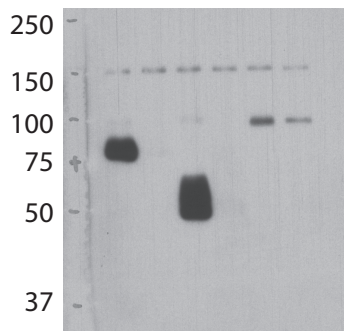


Fig.1C anti-GFP

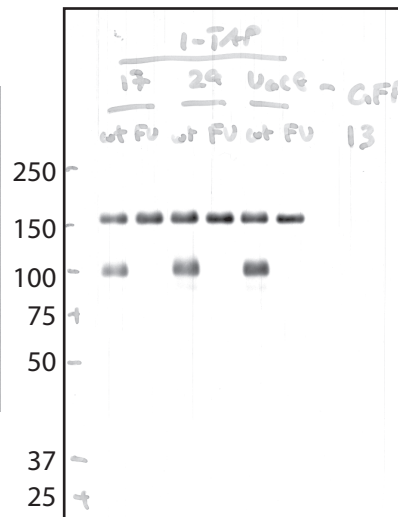


Fig.1C anti-TAP and anti-Atg13

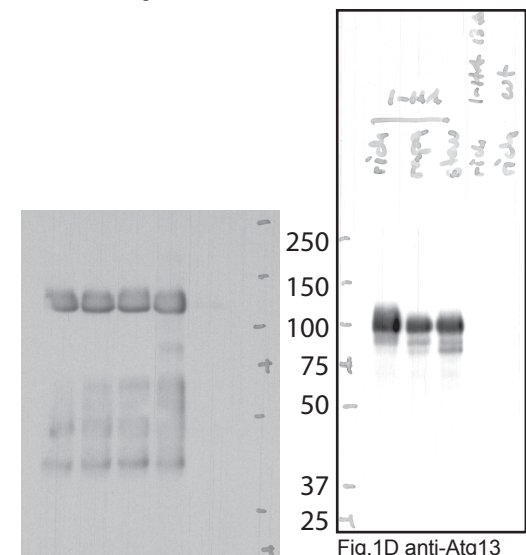


Fig.1D anti-HA

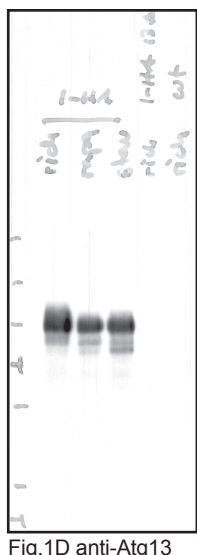


Fig.1D anti-Atg13

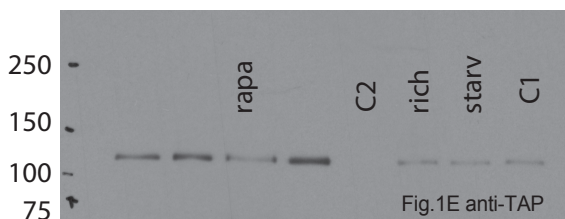


Fig.1E anti-TAP

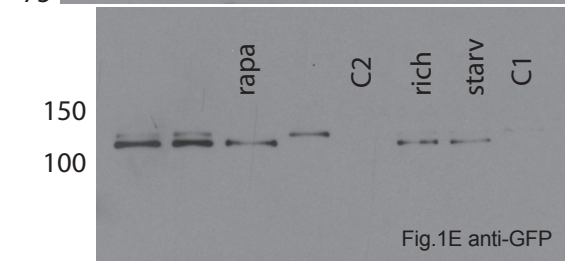


Fig.1E anti-GFP

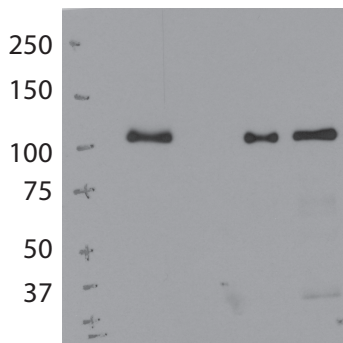


Fig.1E anti-TAP

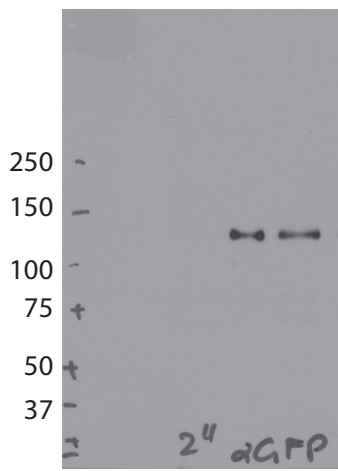


Fig.1E anti-GFP

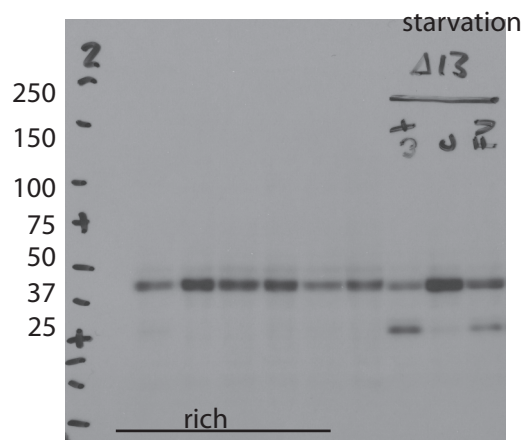


Fig.1I anti-GFP

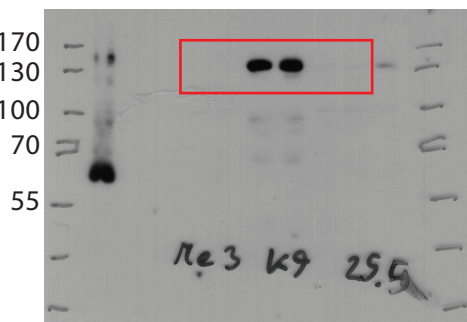


Fig.1F anti-Trimethylation
(blot also shows a positive and negative controls)

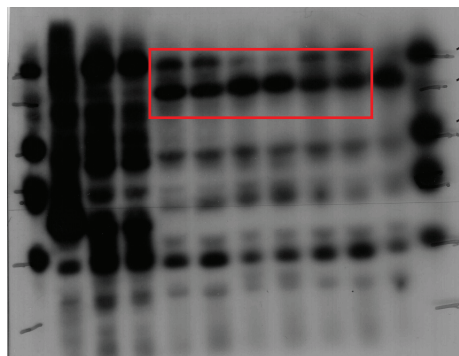


Fig.1F anti-HA

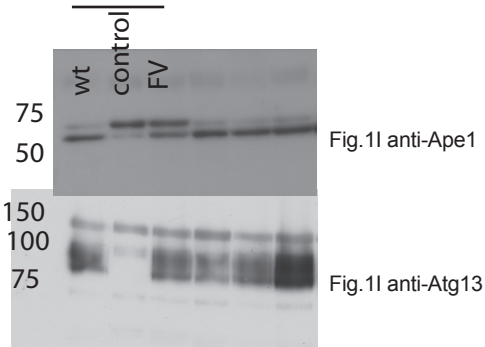


Fig.1I anti-Ape1

Fig.1I anti-Atg13

Figure 1