



Supplemental Material to:

**Robert Taylor, Po-Hao Chen, Chia-Ching Chou,
Jasmin Patel and Shengkan V. Jin**

**KCS1 deletion in *Saccharomyces cerevisiae* leads
to a defect in translocation of autophagic proteins
and reduces autophagosome formation**

Autophagy 2012; 8(9)

<http://dx.doi.org/10.4161/auto.20681>

www.landesbioscience.com/journals/autophagy/article/20681

Figure S1

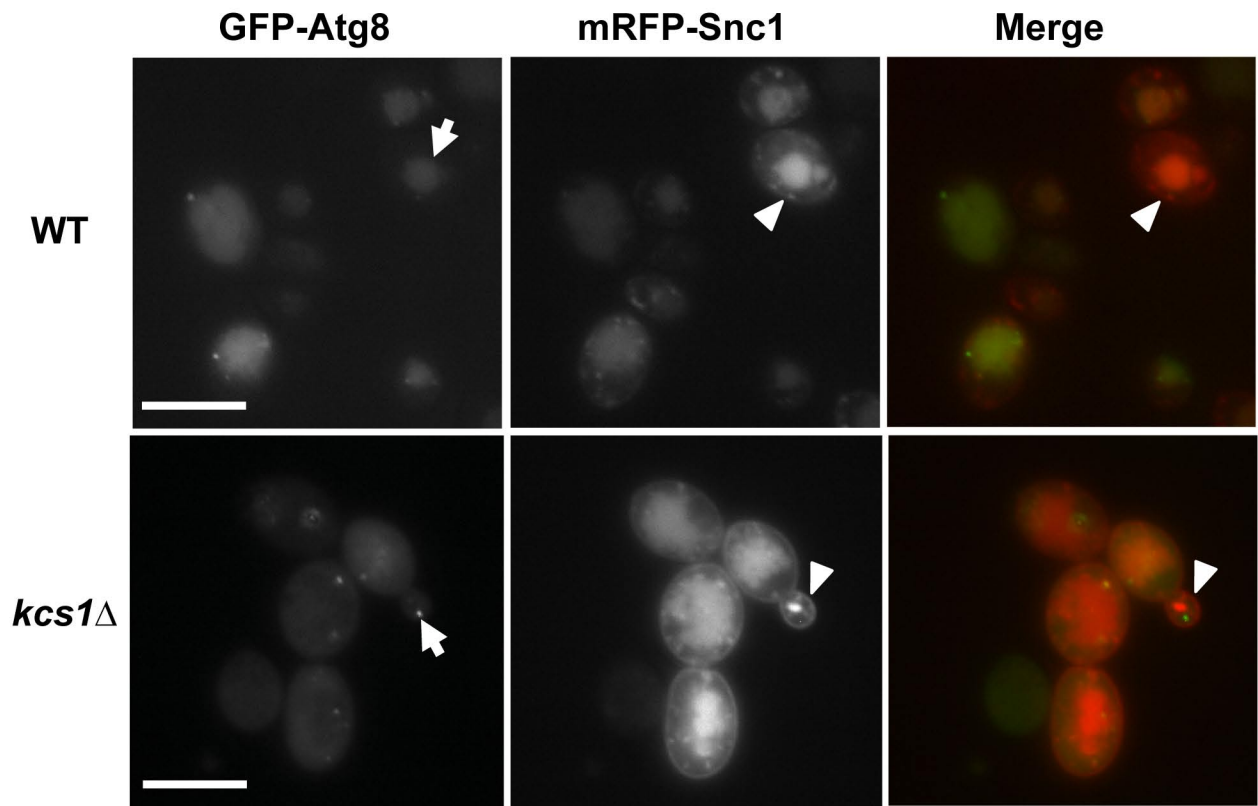


Figure S1. GFP-Atg8 was not colocalized with membrane marker mRFP-Snc1 in wild-type or *kcs1Δ* cells. Figures show representative pictures of the wild-type and *kcs1Δ* cells transformed with pCuGFP-Atg8 (pRS415) and pKT1563 (pRS416 mRFP-Snc1) plasmids, grown to mid-log phase followed by 4 h SD-N nitrogen starvation. Scale bar = 2.5 μm. GFP-Atg8 dots in the *kcs1Δ* are not associated with plasma membrane. Arrows indicate GFP-Atg8 signals, while arrowheads indicate plasma membrane.