

Figure S1. Global contig alignment between *A. arborescens* contigs (blue blocks) and *A. brassicicola* contigs (red blocks). The first 11 lines contain EC contigs alignment and the last line (and the magnified inset) contains CDC contigs alignment. Alignment identity cut-off was set as 70%. Contig numbers are given above blocks. The corresponding alignment identity is shown as spots under contigs.

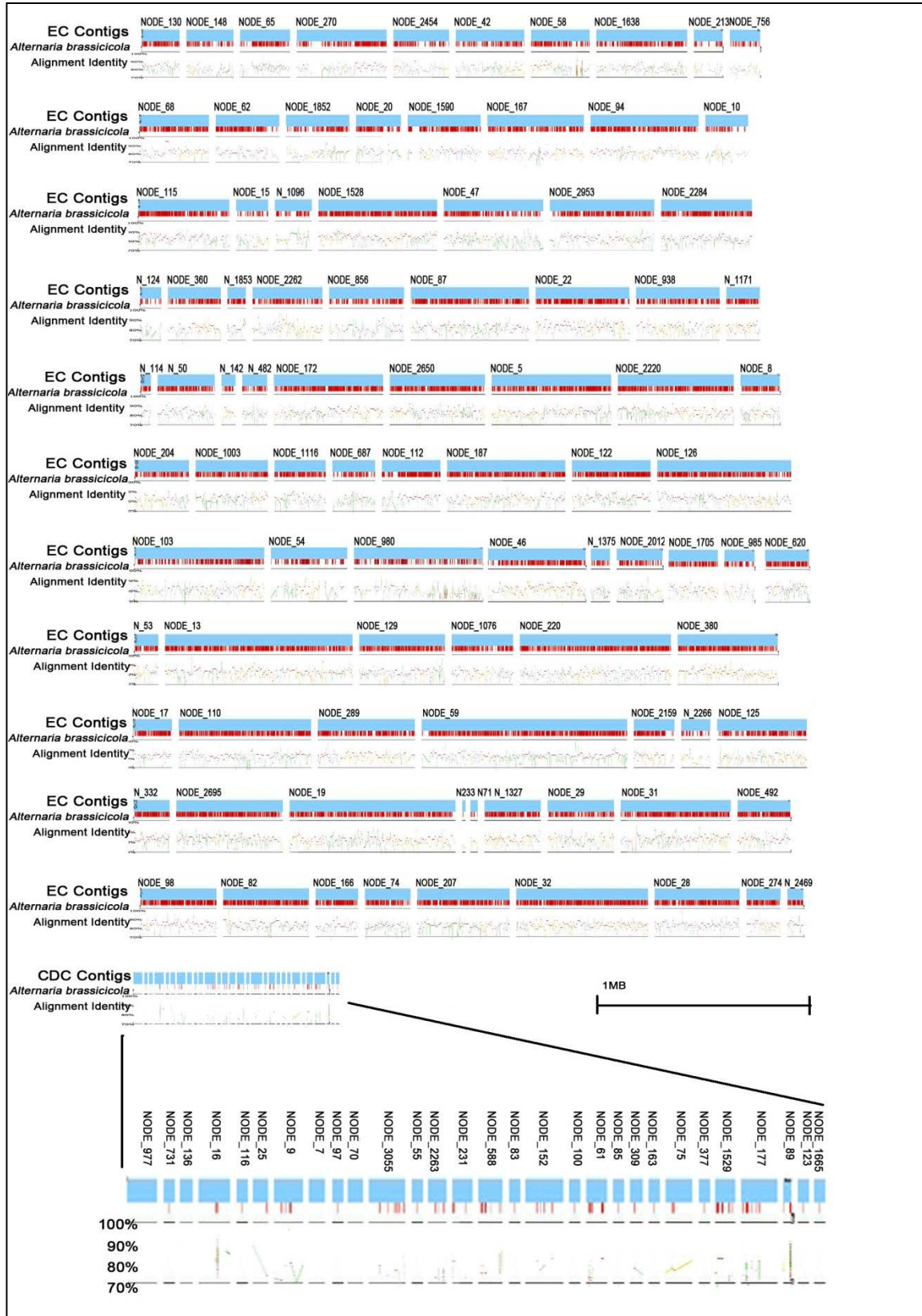


Figure S2. GO term of CDC genes. GO terms were assigned to all CDC genes and level three terms in the categories Biological Process (A), Molecular Function (B), and Cellular Component (C) are showed in the corresponding pie chart.

