

Supplementary

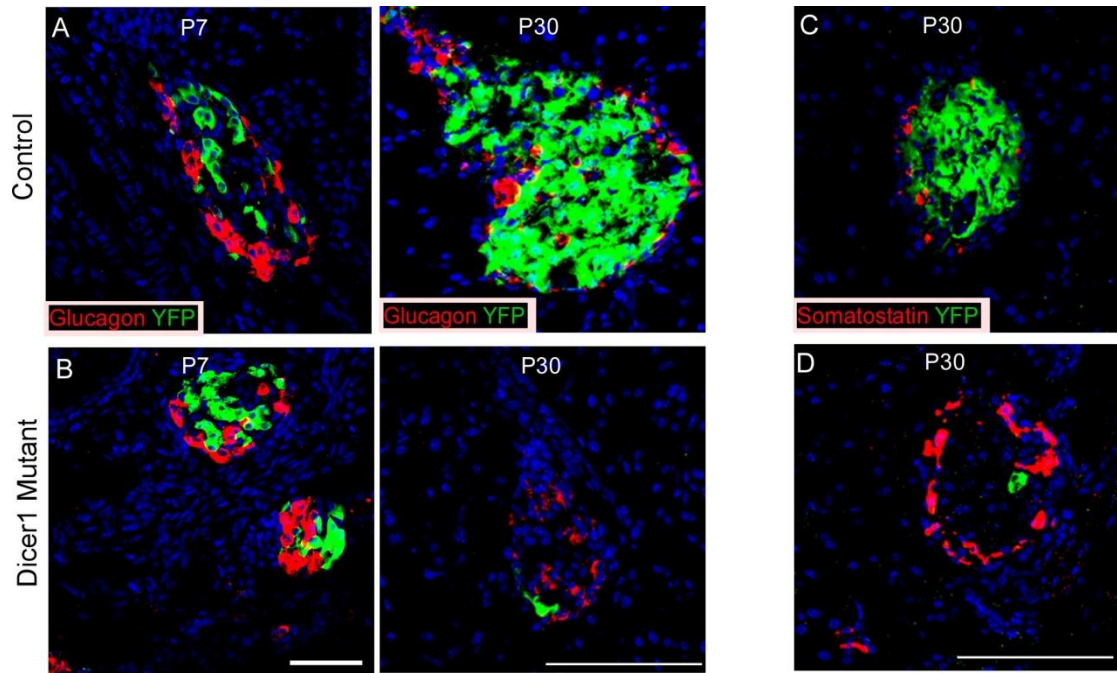


Figure S1: Dicer1 null cells do not express alternative endocrine cell marker.

Normal glucagon expression in alpha cells of RIP-Cre;*Dicer1*^{LoxP/LoxP} islets and control at post-natal days 7 and 30 (A,B) and of somatostatin at post-natal day 30 (C,D). Notably, YFP-positive *Dicer1*-null cells are rarely seen at the age of 30 days, consistent with figures in the main text. Bar - 50 μ m.

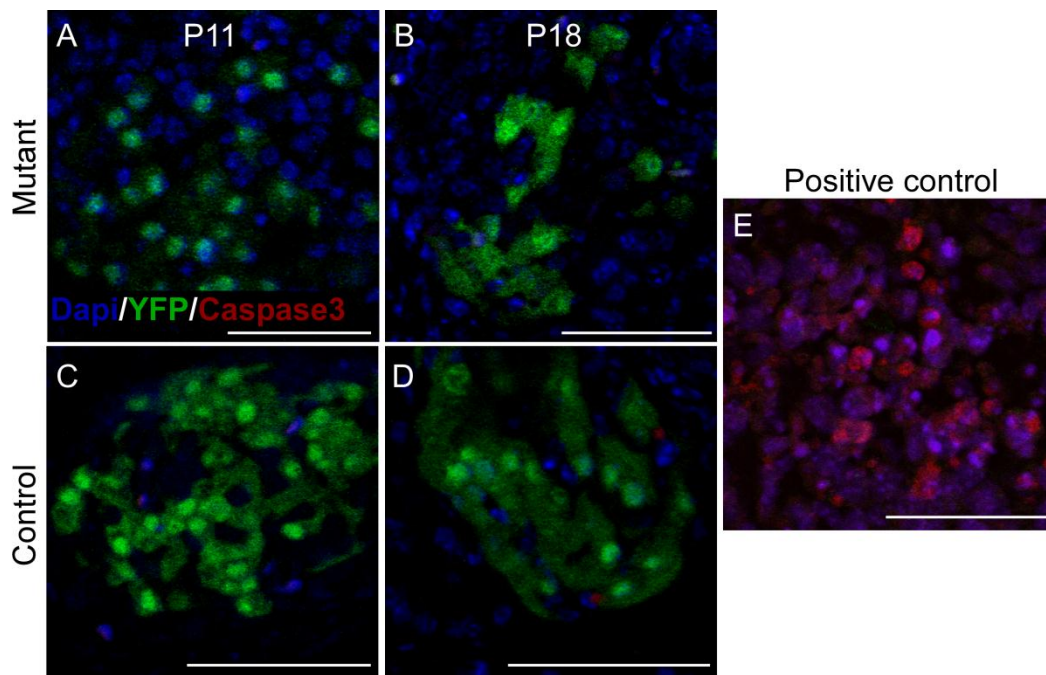


Figure S2: Dicer1 null cells do not undergo apoptosis. Fluorescent immunostaining for activated-caspase 3, neither reveal apoptosis in Dicer1 null cells (A,B) nor in control pancreata (C,D). Positive signal, providing technical control for detection of activated-caspase 3 in irrelevant tissue (embryonic branchial arches, E) Bar - 50µm.

Primers table

Gene name (F-forward, R-reverse)	Forward Primer
Dicer1_F	CCTGACAGTGACGGTCCAAAG
Dicer1_R	CATGACTCTTCAACTCAAAC
Cre_F	TGCCACGACCAAGTGACAGC
Cre_R	CCAGGTTACGGATATAGTTCATG
Rosa26YFP_F	TGTTTTGGAGGCAGGAAGCACTTG
Rosa26YFP_R Wild-type	GCTGCATAAACCCAGATGACTCC
Rosa26YFP_R knockin	CATCAAGGAAACCCTGGACTACTG
Cdh1_F	GGG TCTCAC CGT AGT CCT CA
Cdh1_R	GAT CTT TGG GAG AGC AGT CG