

**The tomato (*Solanum lycopersicum* cv Micro-Tom) natural genetic variation *Rgl* and the DELLA mutant *procera* control the competence necessary to form adventitious roots and shoots.**

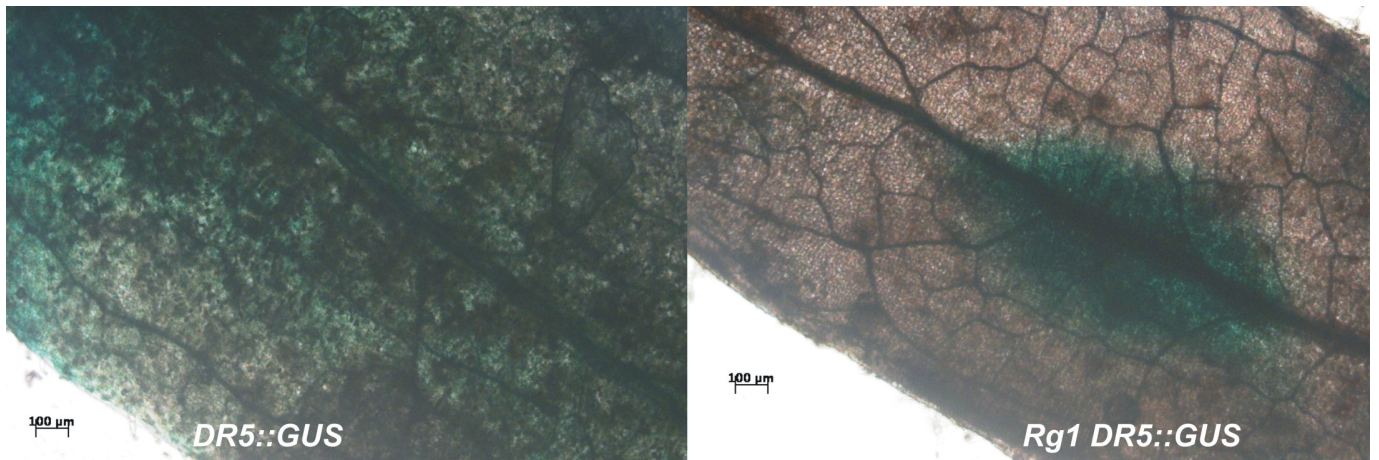
Simone Lombardi-Crestana, Mariana da Silva Azevedo, Geraldo Felipe Ferreira e Silva, Lílian Ellen Pino, Beatriz Appezzato-da-Glória, Antonio Figueira, Fabio Tebaldi Silveira Nogueira, Lázaro Eustáquio Pereira Peres

**Supplementary Material**

Table S1. Primers used in the RT-PCR analysis

Primer	Sequence	SGN Accession*
<i>GAPDH</i> F	TCCATCACAGCCACTCAGAA	Solyc05g014470
<i>GAPDH</i> R	TCAACCACGGACACATCAAC	
<i>GAMyb1</i> F	AACCACATCATCAGGTCAAGC	Solyc01g009070
<i>GAMyb1</i> R	GCACACAGGAAAATCCAGAAG	
<i>GOB</i> F	CTCCTCGATTCTCTCCGTA	Solyc07g062840
<i>GOB</i> R	AGTGCATGCAAGGTGTTTGA	
<i>miR164</i> F	CCTGAGTGGAGAAGCAGGGCA	At2g47585
Universal R	GTGCAGGGTCCGAGGT	
<i>miR164</i> RT	GTCGTATCCAGTGCAGGGTCCGAGGT ATTCGCACTGGATACGACTGCACG	
<i>TKn1</i> F	GTGAAGGCCCTTTTCGTTT	Solyc04g077210
<i>TKn1</i> R	GCTTAGGCCTATAAGGCTTGCT	
<i>TKn2</i> F	GAGGCATTGGAAACCATCAG	Solyc02g081120
<i>TKn2</i> R	CATGCACACAAGTAATATGCAA	
<i>PTS</i> F	TCTAATTTTGATGGGATGAAGG	Solyc06g072480
<i>PTS</i> R	TACGAGTTGTGGCAATCTAGC	
<i>SIPIN4</i> F	TGCGGTTATTTTGGGATGT	Solyc05g008060
<i>SIPIN4</i> R	TTTCTTGTCCTAATGCTCCAAA	
<i>AXL</i> F	CGAGACAATTCATTCCCATGT	Solyc11g072460
<i>AXL</i> R	GCAACTTGTCTTTTCACTTGC	
<i>IAA11</i> F	GTTTTAACGGACGTGAAGCTG	Solyc03g120380
<i>IAA11</i> R	TTATCTGCATCCTCCAATGCT	

\*As annotated in the Sol Genomics Network - SGN (<http://solgenomics.net/search/loci>)



**Fig. S1.** GUS staining of *DR5::GUS* cotyledons in MT (left) and *Rg1* (right) genetic background. Eight-d-old cotyledons were cultivated on RIM (0.4 μM NAA) during 2 d.