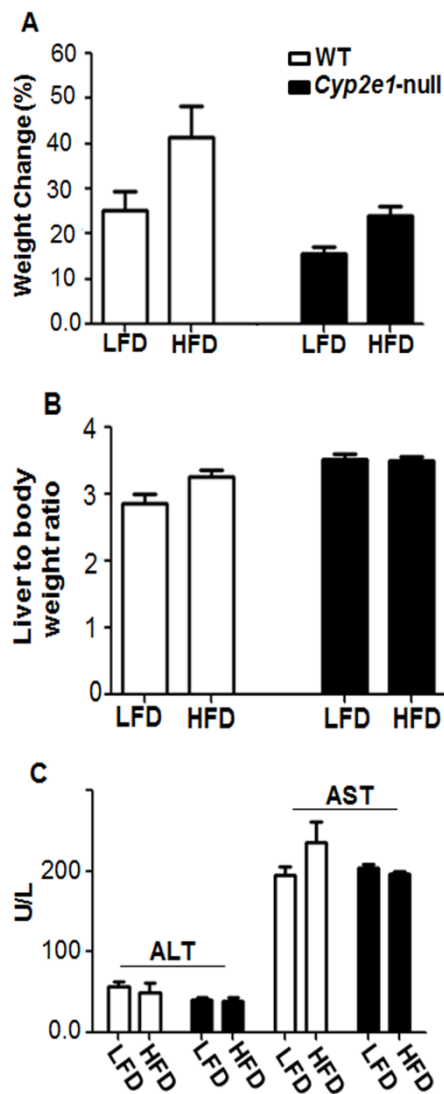


## Supplementary Fig. 1



**Supplementary Fig. 1. Changes in body and liver weights and plasma transaminase activities.** (A) The changes of body weight, measured before and after the exposure to LFD or HFD, are presented as a percentage of weight gain. (B) Immediately following euthanasia, the liver from each mouse was excised and immediately weighed. Liver weight ratios are presented as a percentage of the corresponding body weight for each group. (C) ALT and AST activities were monitored in plasma samples from each mice and presented. Data are expressed as mean  $\pm$  SEM of 4-5 mice per group.