

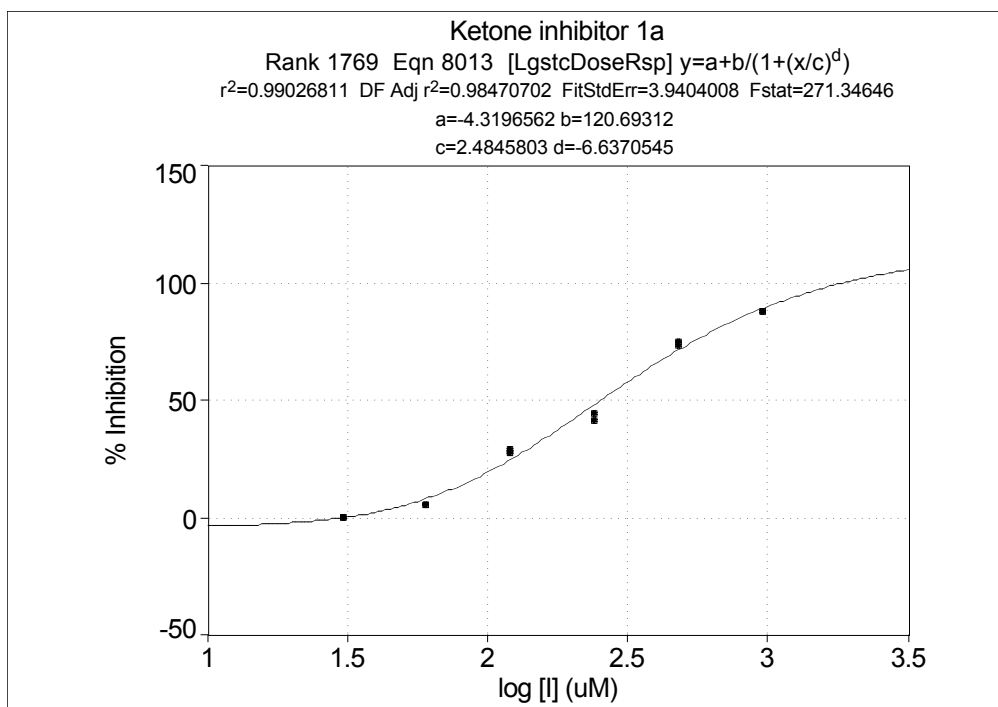
Supporting Information

Cyclohexyl ketone inhibitors of Pin1 dock in a *trans*-diaxial cyclohexane conformation

Guoyan G. Xu, Carla Slebodnick, and Felicia A. Etzkorn*

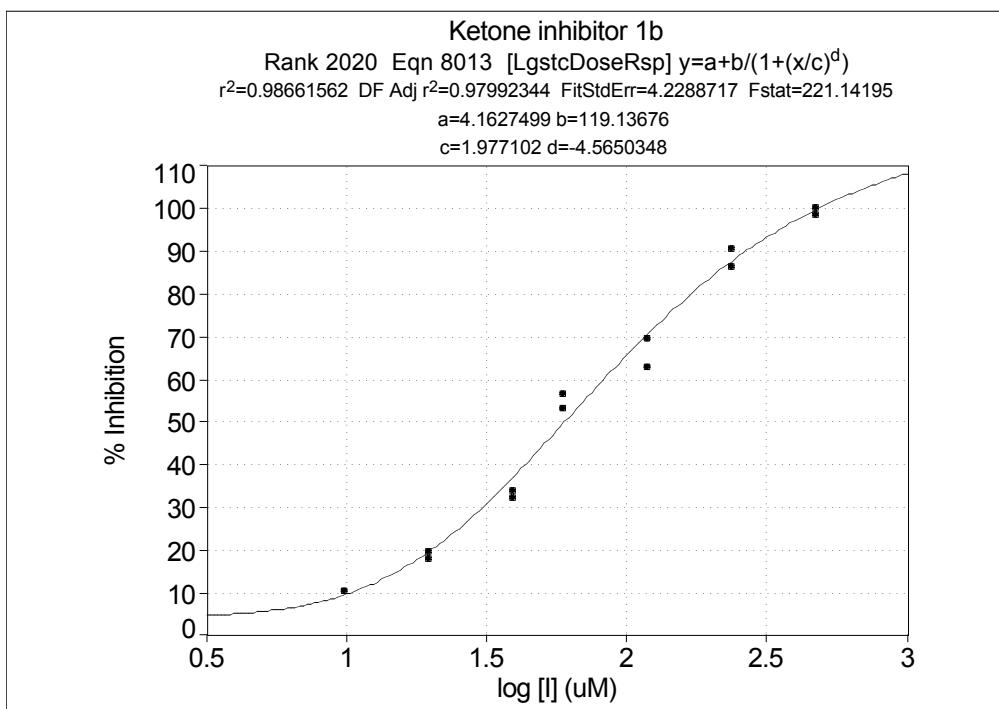
Department of Chemistry, Virginia Tech, Blacksburg, VA 24061-0212, USA

Dataset S2. Pin1 inhibition plots and curve fits for compounds **1** and *rac*-**2**.



Dose response curve for inhibition of Pin1 by compound **1**. $IC_{50} = 260 \pm 30 \mu M$

* Corresponding author. Phone: +1 540 231 2235; fax: +1 540 231 3255; e-mail: fetzkorn@vt.edu



Dose response curve for inhibition of Pin1 by compound *rac-2*. $IC_{50} = 60 \pm 8 \mu M$.