

## Additional file 1

### **Figure S1 Phylogenetic tree and intron map of the CYP71C sequences of Poaceae rooted with five CYP76 sequences of *Arabidopsis***

*thaliana*. This tree is the expanded view of the tree shown on Figure 2. Presence or absence of the first common intron (at position 192) or of the second intron (at position 336) is marked as "1" or "2" respectively. In the absence of intron, a "0" is indicated. Branch lengths are drawn in scale in terms of the number of substitutions per site. Intron localizations are not marked on root sequences. Only nodes with bootstrap values superior to 75% are shown (100 iterations).

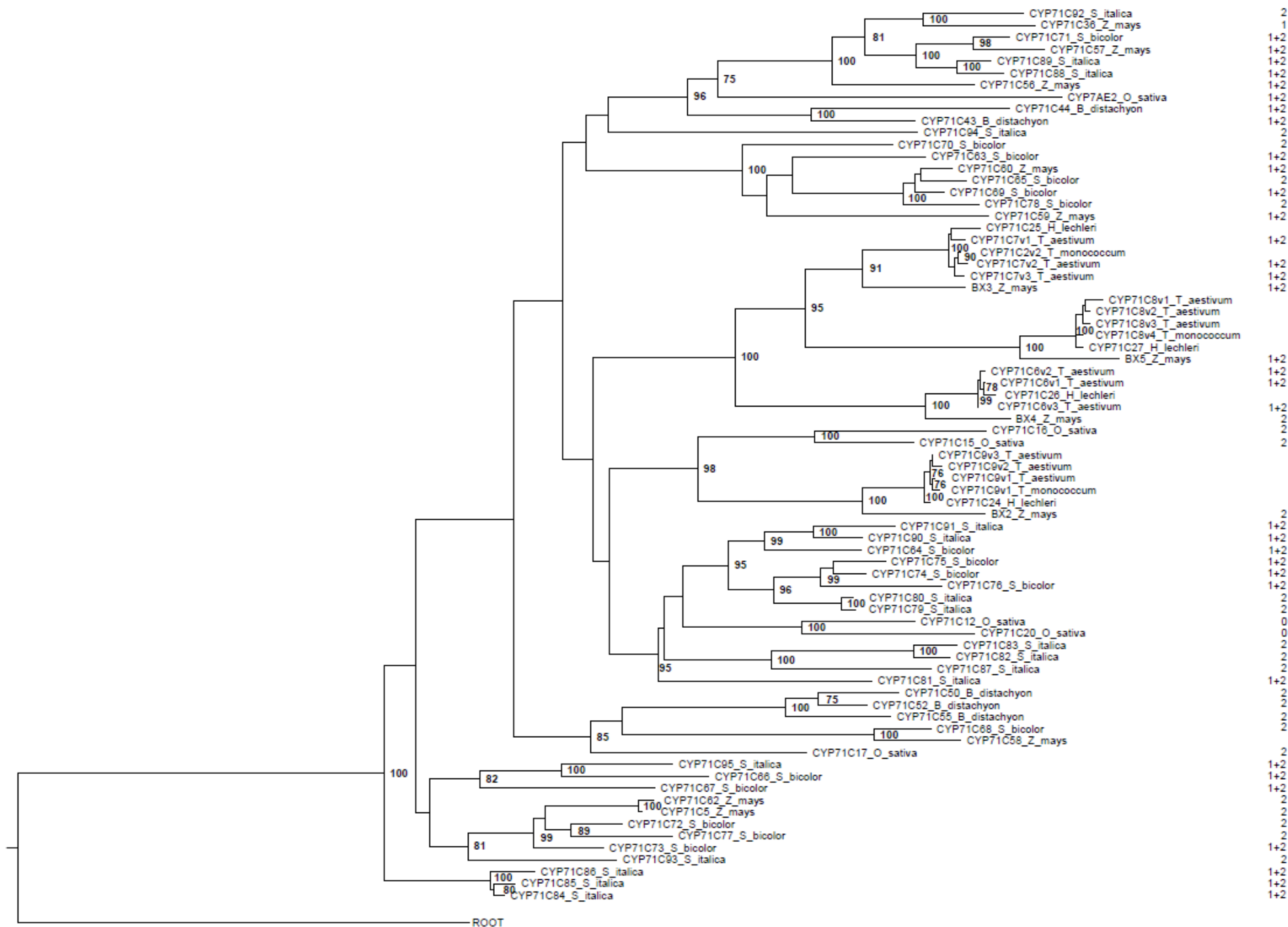


Figure S1

0.2