

Figure S1. SerB is secreted and can spread through the cell. HIGK cells were infected with *P. gingivalis* SerB::FLAG MOI 1 for 15 min and analyzed by CSLM. SerB (red) was labeled using anti-FLAG antibody, cofilin (green) was stained with antibody. Magnification x63. Results are representative of two independent assays. Data shown are maximum projections of z-stacks (10 slices/z stack, 3 coverslips/group).

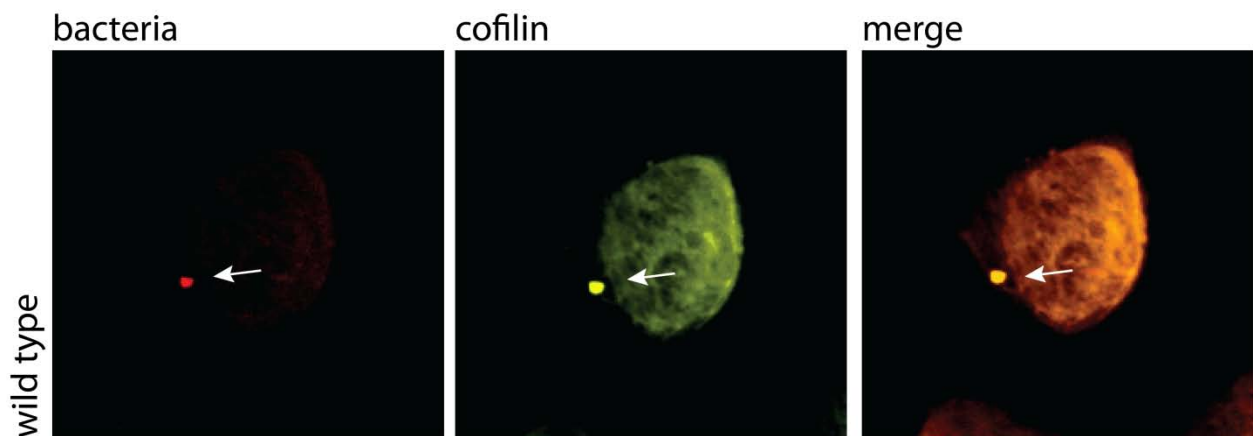


Figure S2. Cofilin localizes with *P. gingivalis*. HIGK cells were infected with *P. gingivalis* wild type MOI 1 for 1 min and analyzed by CSLM. *P. gingivalis* (red) and cofilin (green) were visualized with specific antibodies. Magnification x63. Results are representative of two independent assays. Data shown are maximum projections of z-stacks (10 slices/z stack, 3 coverslips/group).

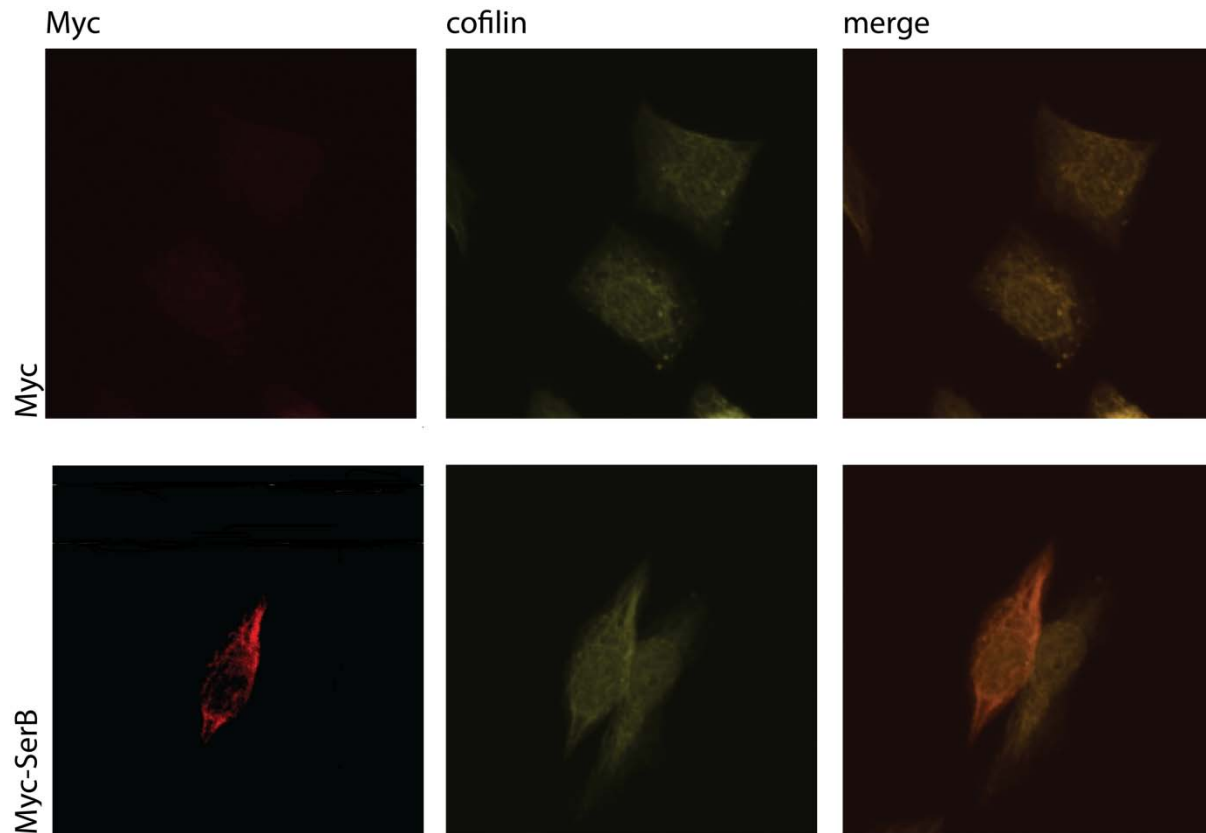


Figure S3. Ecotopic SerB colocalizes with cofilin. HIGK cells were transfected with pCMV-Myc containing SerB or empty vector control. Cells were labeled with antibodies to Myc (red) and cofilin (yellow) and analyzed by CSLM. Magnification x63. Results are representative of two independent experiments (n=3 coverslips/group). Data shown are maximum projections of z-stacks (10 slices/z stack).

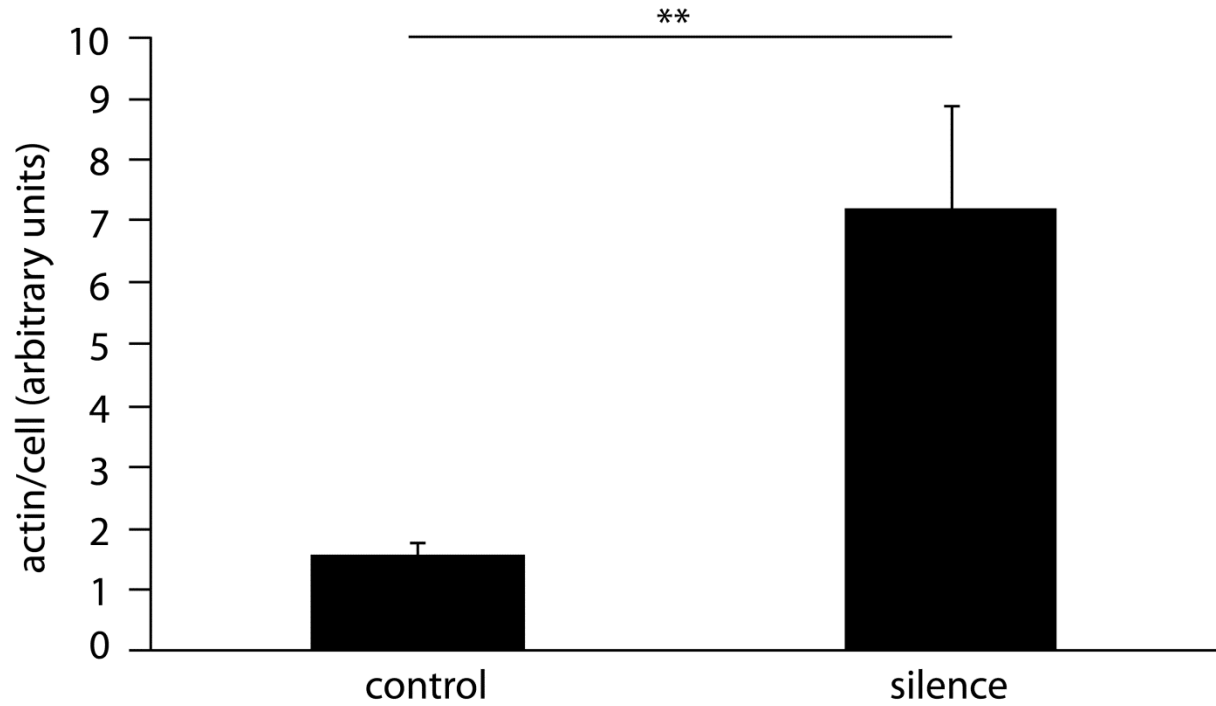


Figure S4. Cofilin knockdown increases F-actin in HIGKs. HIGK cells were transfected with silence(si)-cofilin and the control was transfection agent only. Cells were stained with TRITC-phalloidin and analyzed by CSLM. Fluorescence intensity analysis with Leica Confocal software was used to quantitate filamentous actin levels (arbitrary units). Results are representative of two independent experiments (n=3 coverslips/group). Data are means and error bars indicate standard deviations. **, P <0.01; by Tukey-Kramer Multiple Comparison test.

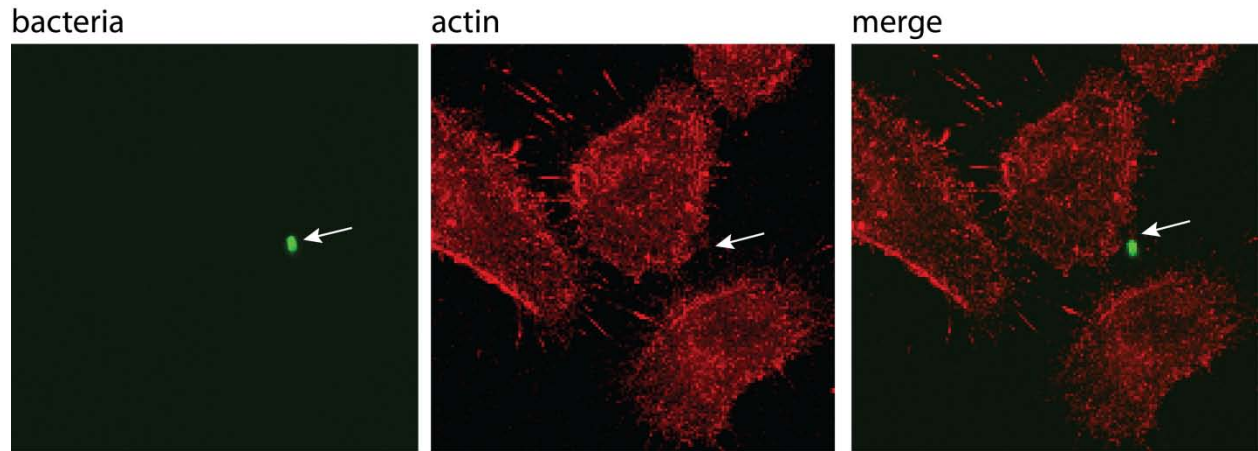


Figure S5. Actin is rapidly depolymerized around internalizing *P. gingivalis*. HIGK cells were infected with *P. gingivalis* MOI 1 for 1 min and analyzed by CSLM. Bacteria (green) were labeled with *P. gingivalis* antibody, actin (red) was stained with TRITC-phalloidin. Magnification x63. Data shown are maximum projections of z-stacks (10 slices/z stack).