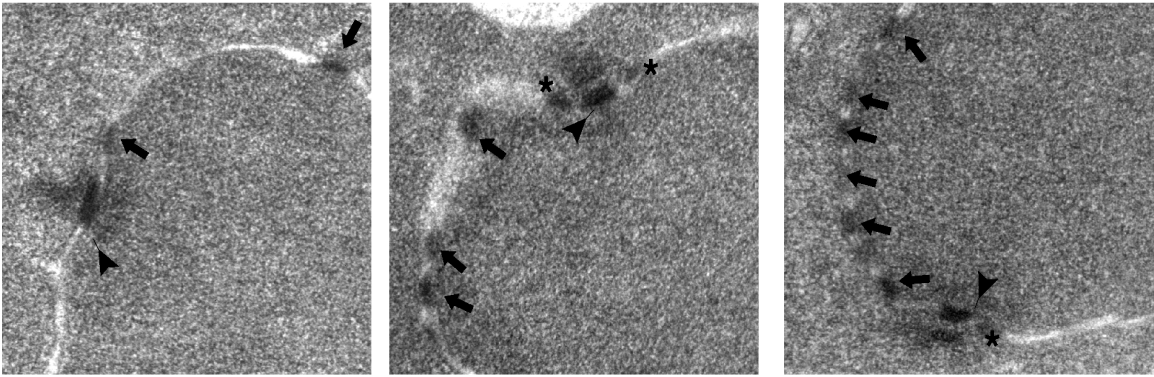


*rtn1Δ yop1Δ*



**Figure S1** Deletion of *RTN1* and *YOP1* result in abnormalities in the SPB. *rtn1Δ yop1Δ* (SWY3811) cells were grown to early log phase at 23°C and processed for TEM. Scale bar, 100 nm. Arrowheads point to SPBs, arrows point to NPCs, asterisks indicate abnormal lobular structures on SPBs.