

Table S1. List of oligonucleotide primers.

№	sequence
#1	5'-GGCATCGARTACTCGATCAAYAAYGC-3'
#2	5'-CGAACCGCCCGARTCGCC-3'
#3	5'-CGCTCGGCTTCATTCCATCGATC-3'
#4	5'-TCAGCCGGTGACCAGGCTCAGGCC-3'
#5	5'-GAAGCAACGGCCACTGTCGCTCAC-3'
#6	5'-GGGCTACACCGGTGCGCGATC-3'
#7	5'-GAGTTTTTCGGTCTGCAGGT-3'
#8	5'-CGGTCGGCTTGCACCAT-3'
#9	5'-P-CACATTGGGCACGGACGAGGAAddC-3'
#10	5'- <u>ctccgccgggtcccc</u> AACAGT <u>GTTGCATCGCGA</u> ACTTCAGCTC-3'
#11	5'- <u>ctccgccgggtcccc</u> AACAGT <u>TTGAGAGTCGGGTTGAGAC</u> -3'
#12	5'-TTCCTCGTCCGTGCCCAATGTG-3'
#13	5'-CTCCGCCGGGTCCCCAACAGT-3'
#14	5'- <u>TTTTATCATATGTCCGTATCGAAGTCCAATGC</u> -3'
#15	5'- <u>AAATTACTCGAGGCAGCGGCATGAACGACAAC</u> -3'
#16	5'- <u>TTTTTACATATGTCCGTATCGAAGTCGAATCT</u> -3'
#17	5'- <u>TATTATCTCGAGCCATCGTCCCGAAGCGCATG</u> -3'

The nucleotides noncomplimentary to the sequences of *alpA* and *alpB* are underlined; in the sequences of primers #10 and #11, the nucleotides corresponding to the sequence of vector pUC18-lic are shown by lowercase letters.

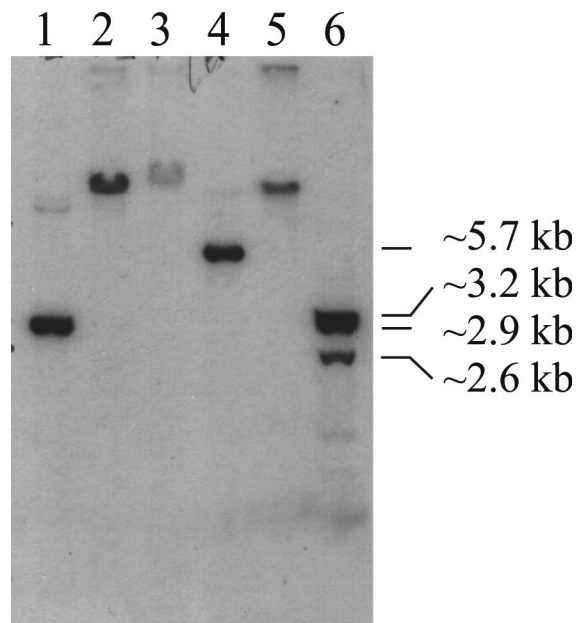


Fig. S1. (Supplemental material) Southern blot hybridization of *Lysobacter* sp. XL1 genomic DNA fragments with DNA probe to endopeptidase L1 gene. Numbers indicate restriction endonucleases *EcoRI* (1), *HindIII* (2), *XbaI* (3), *XhoI* (4), *BamHI* (5) and *SalI* (6).