

Figure S1

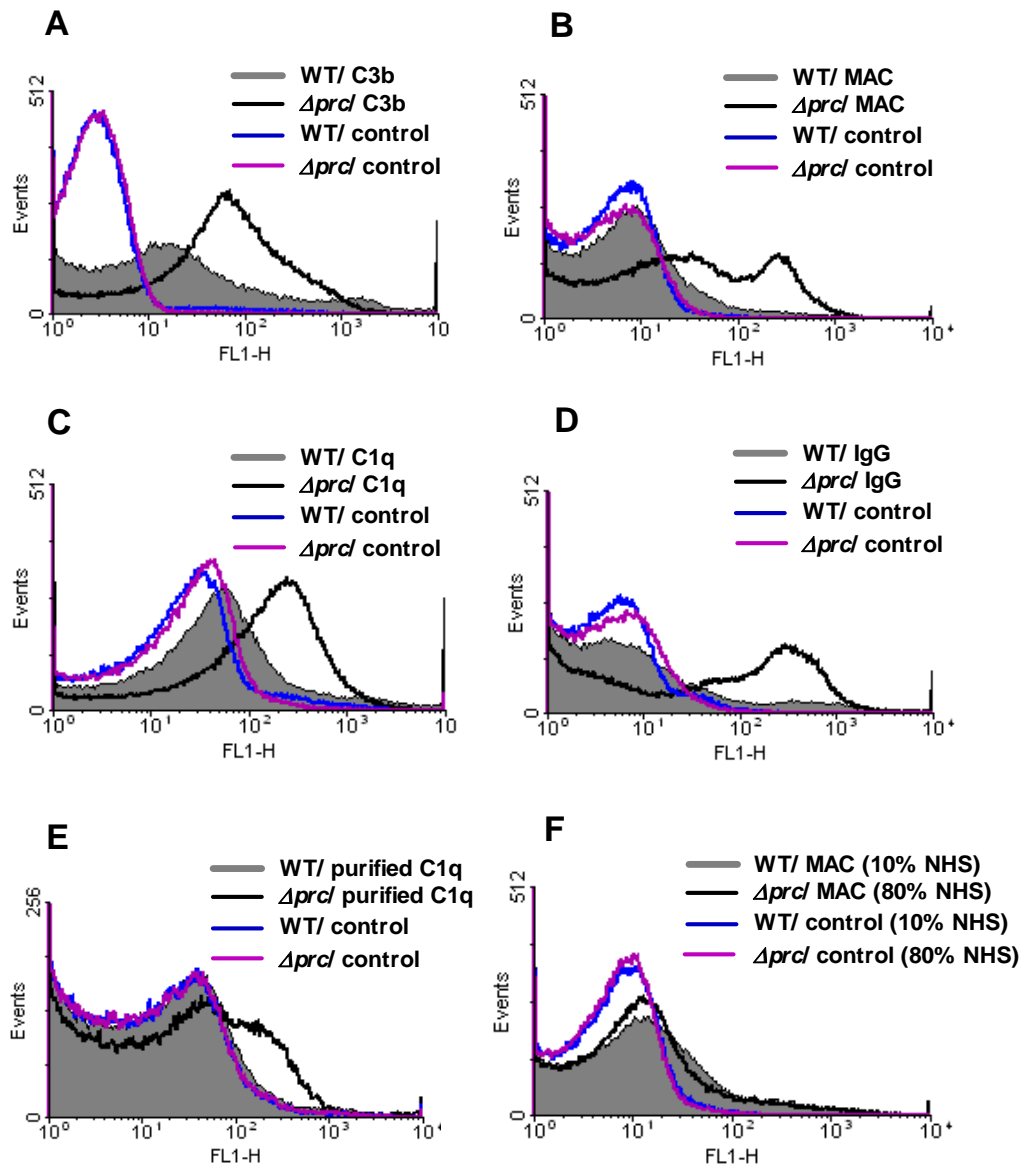


Fig.S1. Representative histograms of the flow cytometry results for complement components and IgG deposition shown in this study. (A), (B), (C), (D), (E), and (F) are the representative histograms of figures 3A, 3B, 3F, 4A, 4C, and 6C, respectively. The histograms are the results of 15 min incubation of bacterial strains with serum or purified C1q.

Figure S2

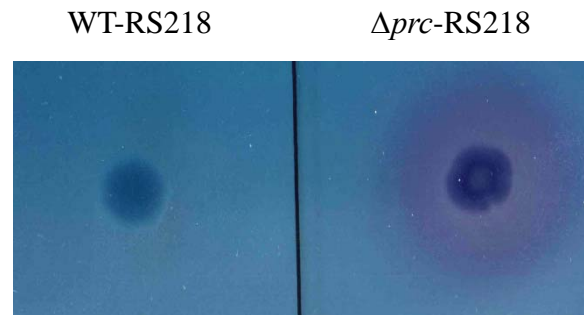


Fig. S2. RNase leakage analyses of WT-RS218 and Δprc -RS218. The bacteria were grown on a RNase test agar plate. The pink halo around the Δprc -RS218 colony indicates a significant leakage of periplasmic RNase into the agar. This result suggests that deletion of Prc increases the permeability of the outer membrane of *E. coli* strain RS218.