

Figure S1

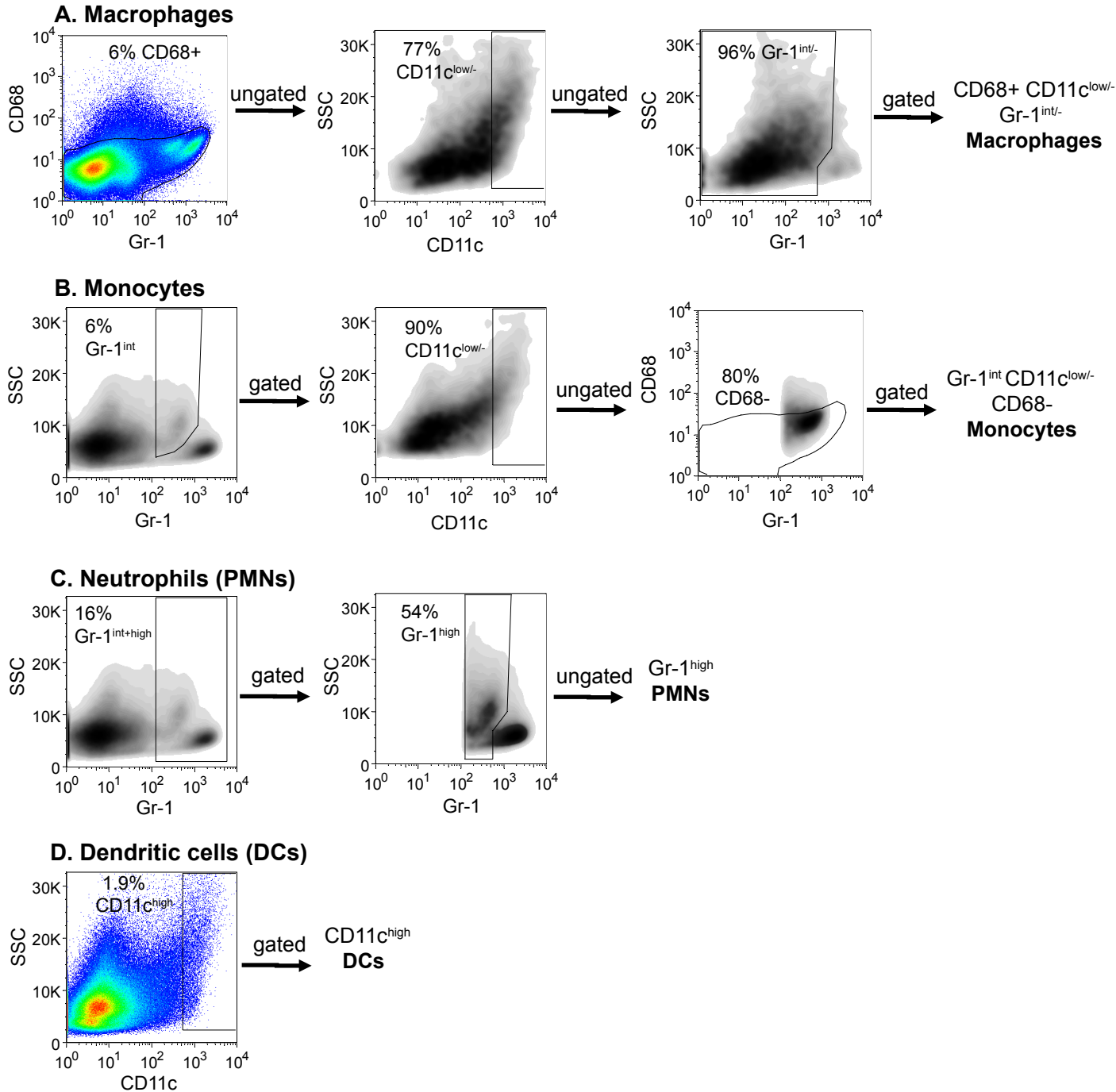


Figure S1. Gating procedure for macrophages, monocytes, neutrophils and dendritic cells. Macrophages are defined as CD68⁺ CD11c^{low/-} Gr-1^{int/-} (A). Monocytes are Gr-1^{int} CD11c^{low/-} CD68⁻ (B). PMNs are Gr-1^{high} (C). DCs are CD11c^{high} (D).