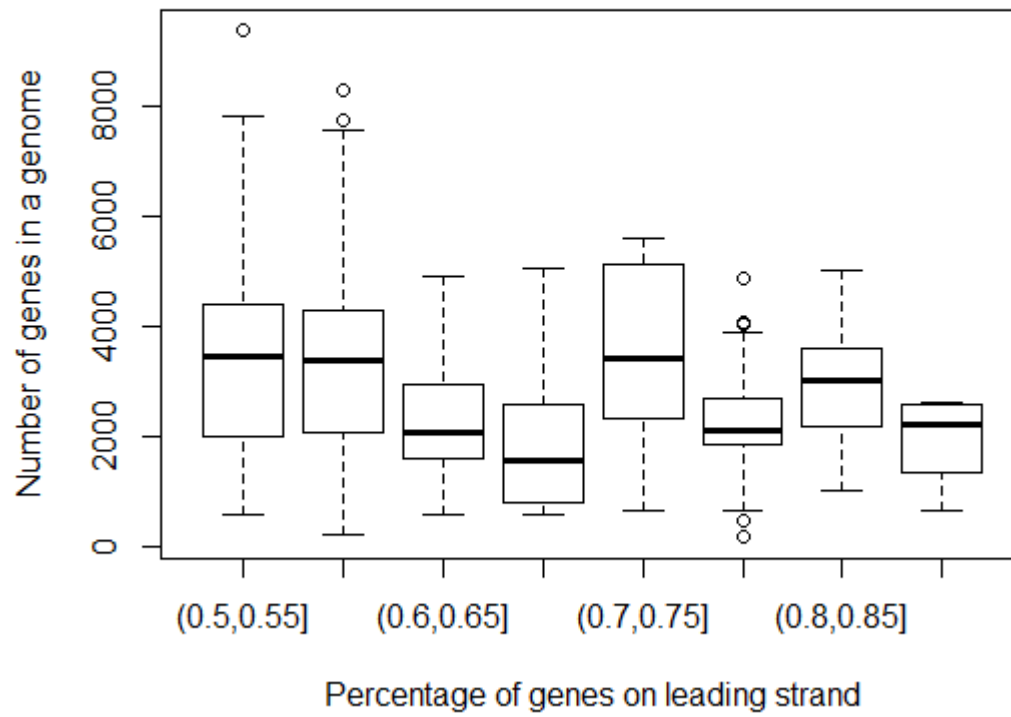
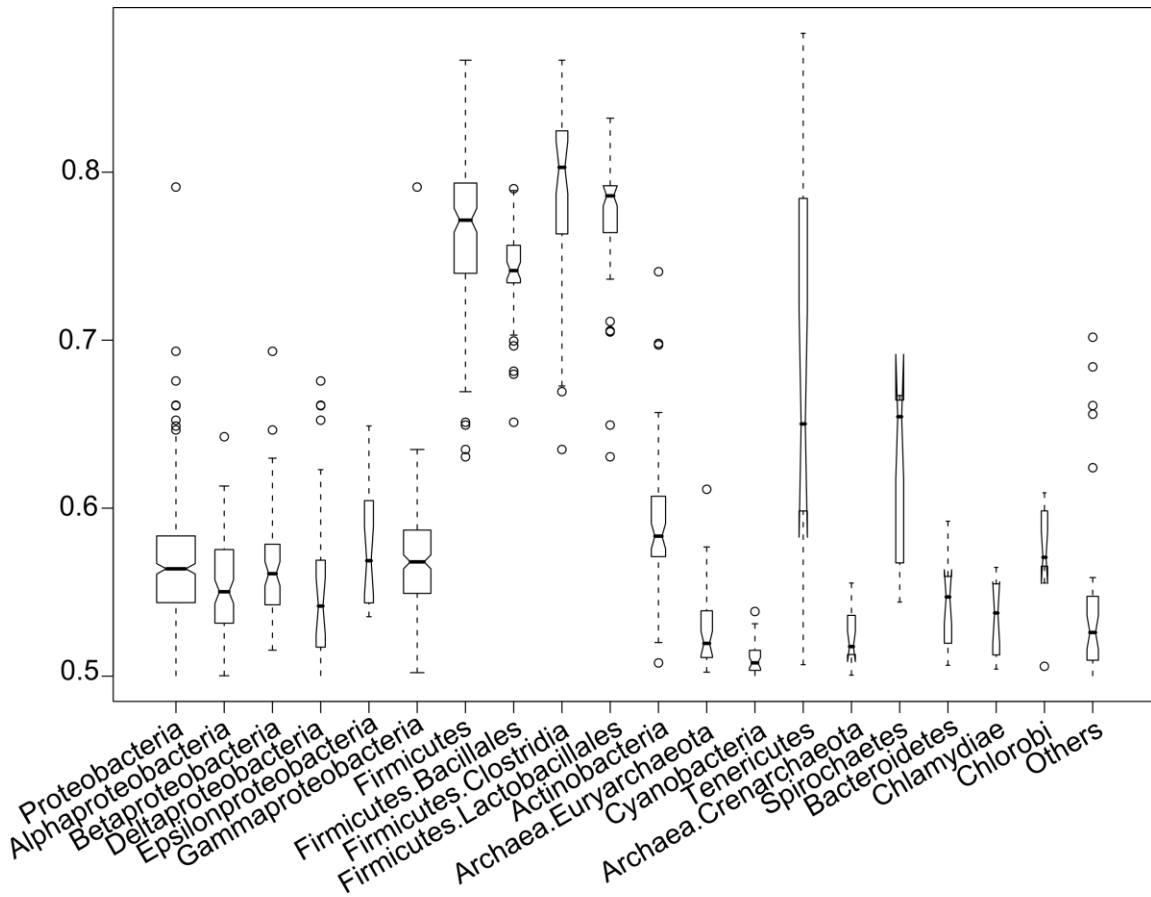


Supplementary figures

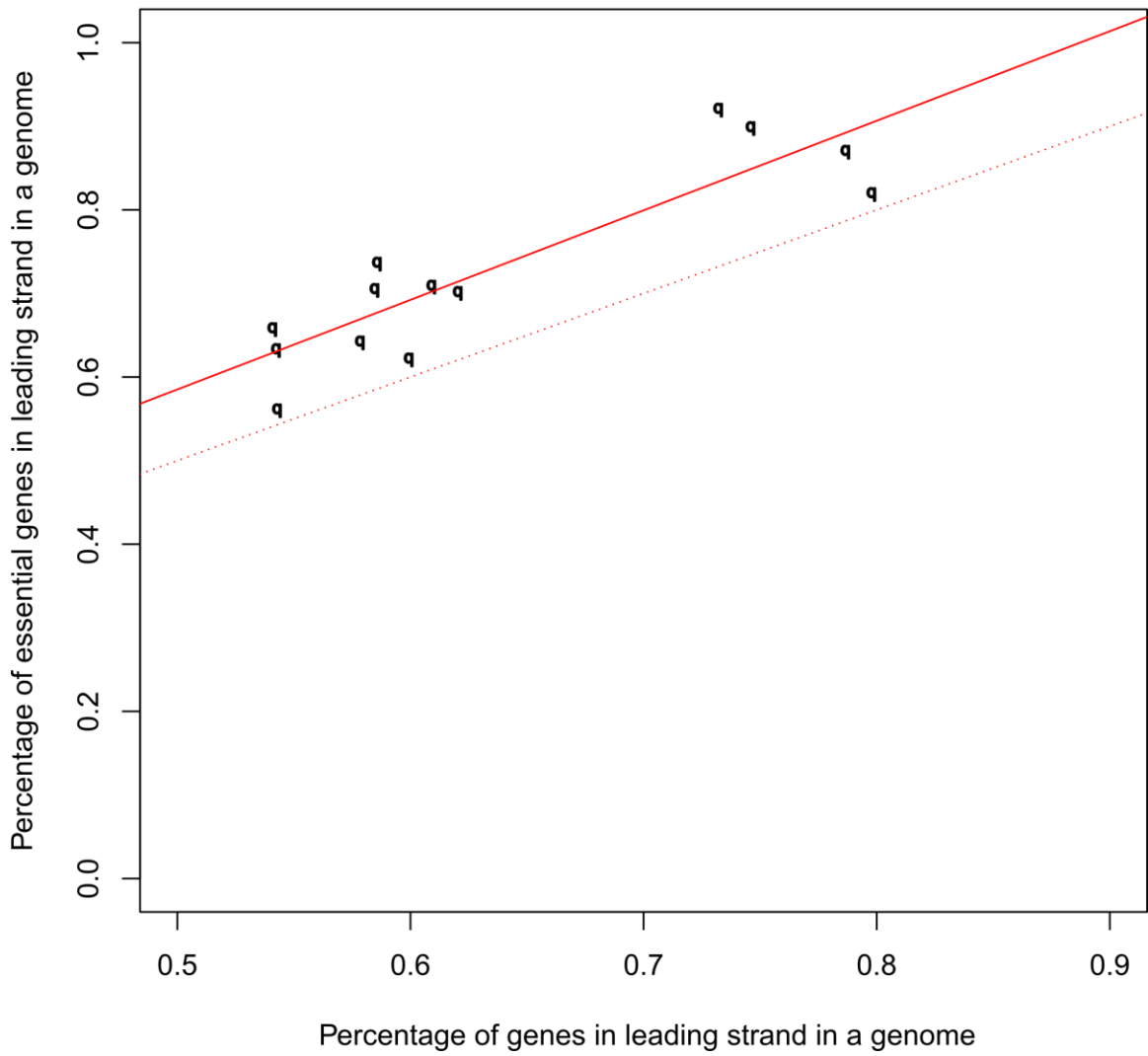


Supplementary Figure S1: Boxplot of the number of genes in a genome versus the percentage of genes to be on leading strand



Supplementary Figure S2: Distribution of percentages of genes on the leading strand across different taxonomical groups

Essential genes for 13 bacteria, preference: 0.0128



Supplementary Figure S3: Preferences of essential genes in leading strand across 13 genomes