

SUPPLEMENTARY ONLINE DATA

Mitochondrial c-Src regulates cell survival through phosphorylation of respiratory chain components

Masato OGURA, Junko YAMAKI, Miwako K. HOMMA and Yoshimi HOMMA¹

Department of Biomolecular Science, Fukushima Medical University School of Medicine, Fukushima 960-1295, Japan

Supplementary Table S1 is available as an Excel file at <http://www.BiochemJ.org/bj/447/bj4470281add.htm>.

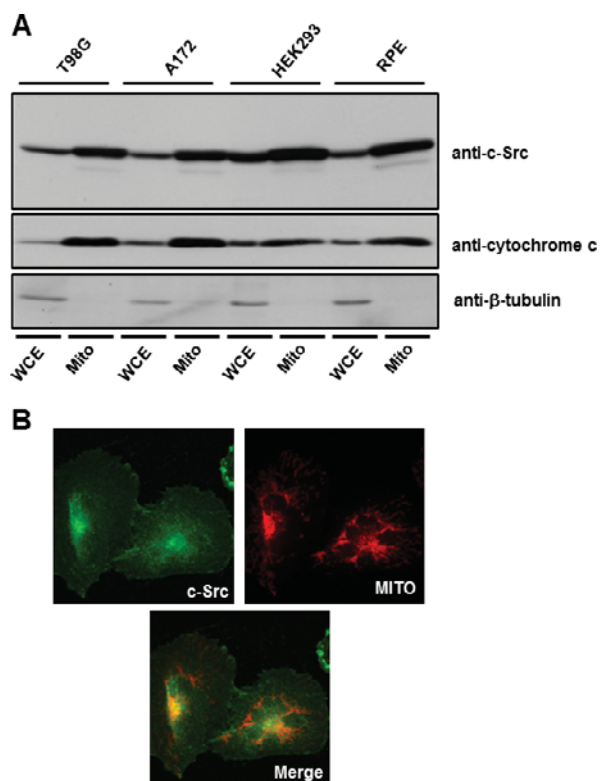


Figure S1 Expression of c-Src in mitochondria

(A) Whole-cell (WCE) and mitochondrial (Mito) extracts prepared from T98G, A172, HEK-293 and RPE cells were blotted with anti-c-Src, anti-cytochrome *c* and anti-β-tubulin antibodies.

(B) T98G cells were stained with Alexa Fluor® 488/546-conjugated anti-c-Src antibody and MitoTracker Red (MITO). The cells were observed using the confocal laser-scanning microscope.

¹ To whom correspondence should be addressed (email yoshihom@fmu.ac.jp).

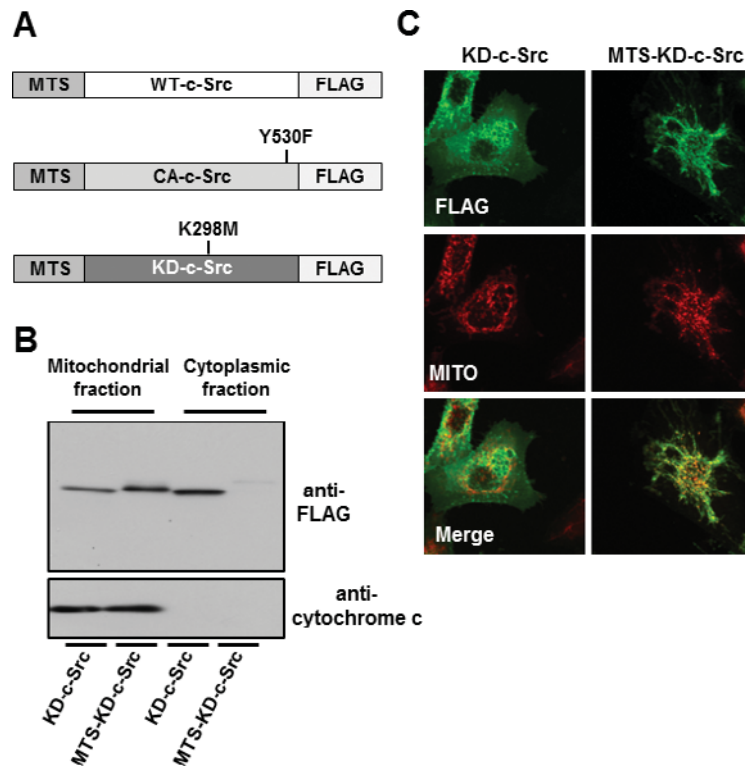


Figure S2 Mitochondrial localization of MTS-KD-c-Src

(A) Schematic representations of C-FLAG-tagged MTS-WT-c-Src, MTS-KD-c-Src and MTS-CA-c-Src. (B) Expression of KD-c-Src in mitochondria using an MTS signal sequence. Mitochondrial and cytoplasmic fractions prepared from T98G cells expressing either C-FLAG-tagged KD-c-Src or MTS-KD-c-Src were blotted with an anti-FLAG antibody and an anti-cytochrome *c* antibody. (C) Mitochondrial localization of c-Src harbouring an MTS. T98G cells expressing either C-FLAG-tagged KD-c-Src or MTS-KD-c-Src were stained with an Alexa Fluor® 488/546-conjugated anti-FLAG antibody and MitoTracker Red (MITO). The cells were observed using a confocal laser-scanning microscope.

Received 23 March 2012/17 July 2012; accepted 24 July 2012

Published as BJ Immediate Publication 24 July 2012, doi:10.1042/BJ20120509