

Controls > Patients

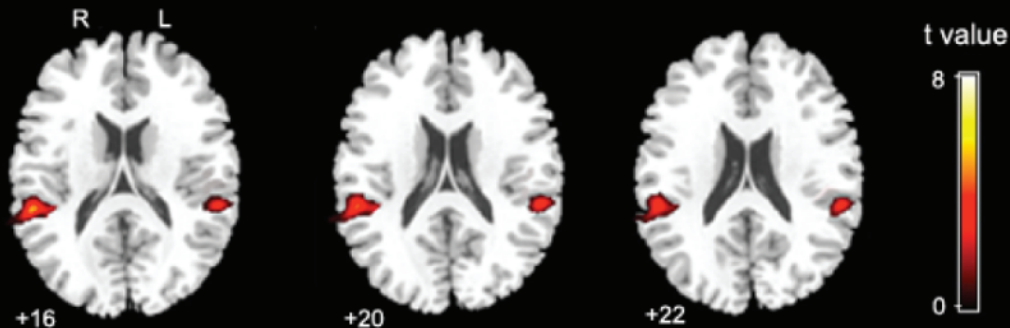


Figure e-2. **Brain regions that showed less increase in activity during stimulation in PVS than in controls** Interaction {(finger movement vs rest) x (patients vs controls)} (images are displayed at a non-corrected threshold $p < 0.005$; SVC applied on BA40 areas, corrected $p_{\text{FWE}} < 0.05$).