

Supplementary information, Figure S4

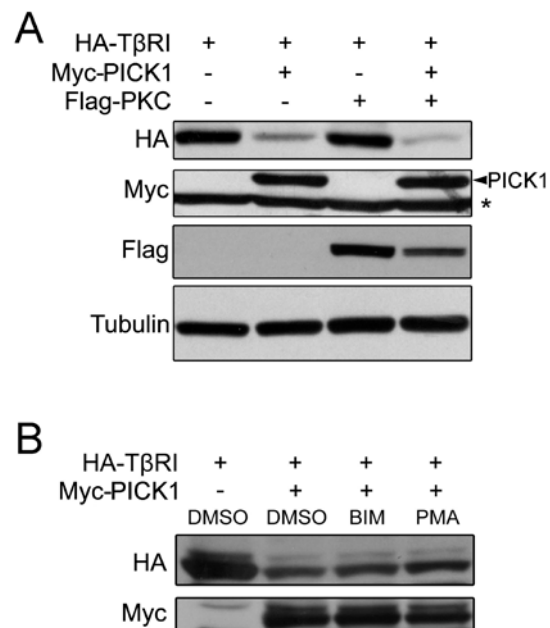


Figure S4 PICK1-mediated degradation of T β RI was not apparently influenced by PKC. **(A)** HEK293T cells were transfected with indicated constructs and harvested for immunoblotting. * indicates a nonspecific band. **(B)** Both PKC inhibitor Bisindolylmaleimide I (BIM) and activator phorbol-12-myristate-13-acetate (PMA) had no effect on PICK1-mediated degradation of T β RI. HEK293T cells transfected with indicated constructs were treated with the chemicals for 4 hours and then harvested for immunoblotting.