

Supplementary information, Figure S1

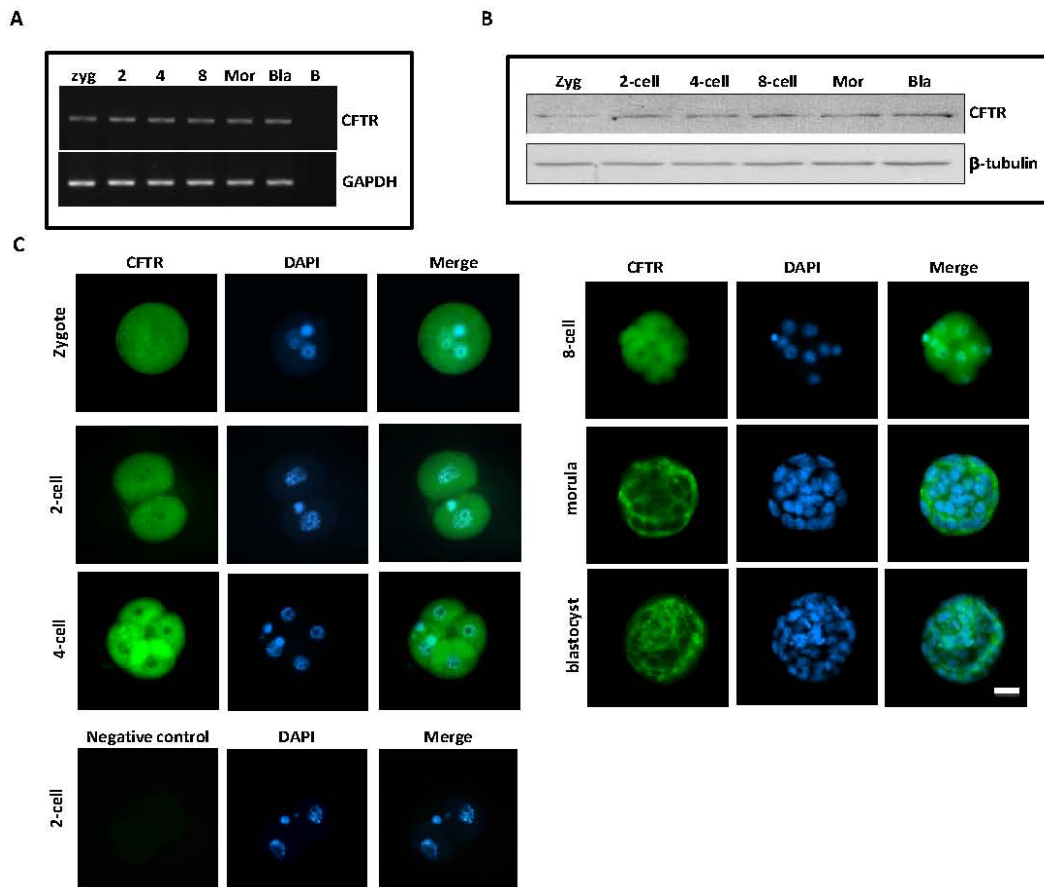


Figure S1 Expression of CFTR in mouse embryo. **(A)** RT-PCR study showing CFTR mRNA expression from zygote to blastocyst with GAPDH as internal control. **(B)** Western blot analysis of CFTR expression from zygote to blastocyst with the expected band size of CFTR at 160 kDa. β -tubulin was used as protein loading control. Zy:zygote, 2, 4, 8: two, four, eight-cell embryos, Mor: morula, Bla: blastocyst, B: blank. **(C)** Immunofluorescent staining shows localization of CFTR (green) from zygote to blastocyst, with nuclei counterstained by DAPI (blue). 2-cell embryos were used in negative control group. Scale bar: 50 μ m.