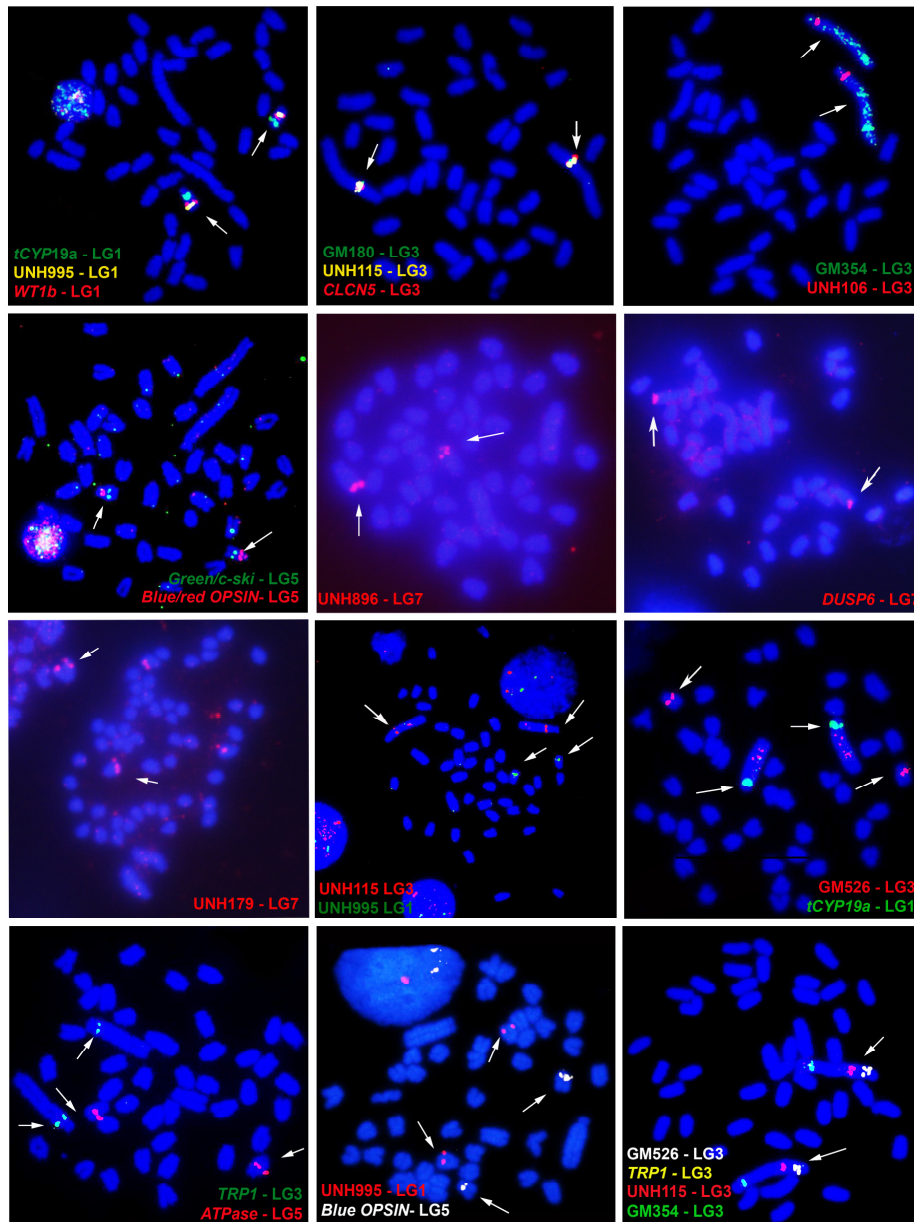
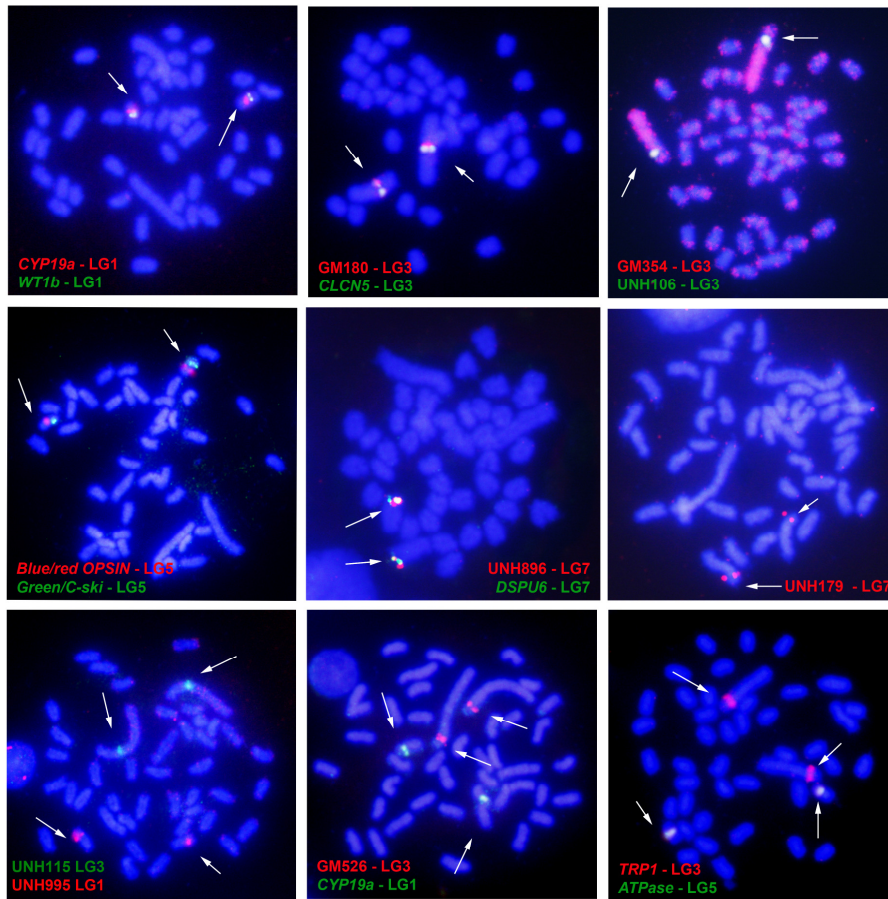


Additional file 1: Metaphase spreads of cichlid species probed with BAC clones from *Oreochromis niloticus*. BACs containing markers of LG 1, 3, 5 and 7 were hybridized under FISH procedure and are indicated in different colors in each metaphase. The arrows indicate the chromosome position of probes. Scale bar 10 μ m.

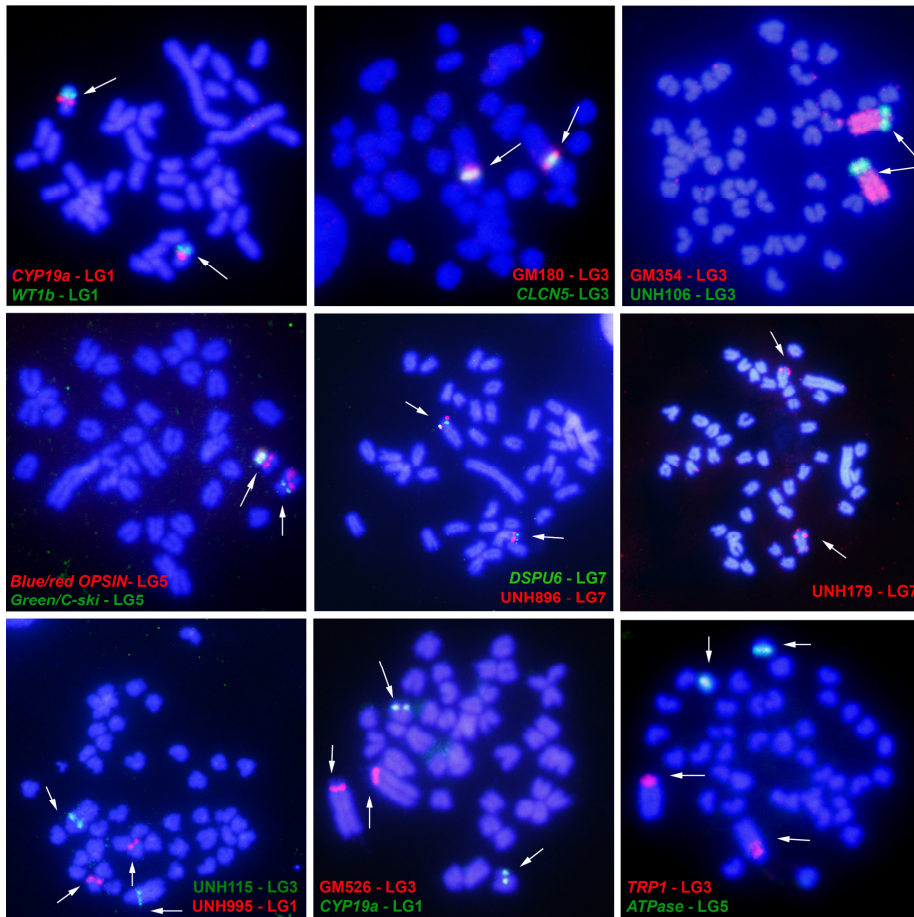
Oreochromis niloticus



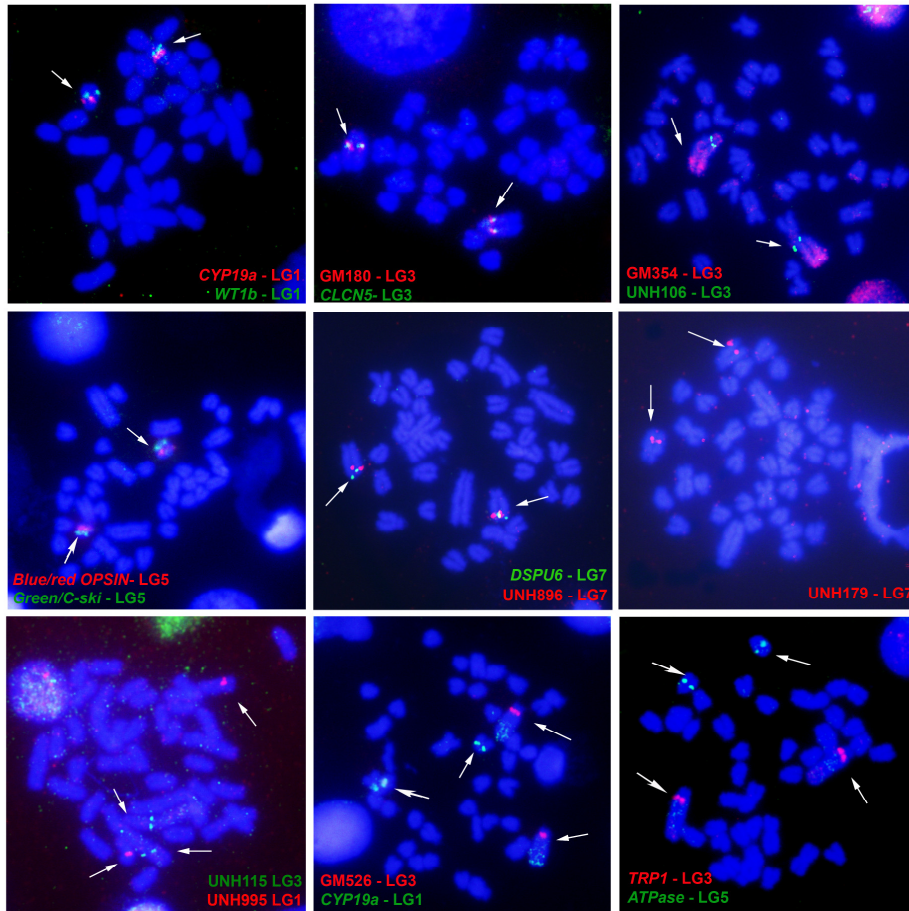
Oreochromis mossambicus



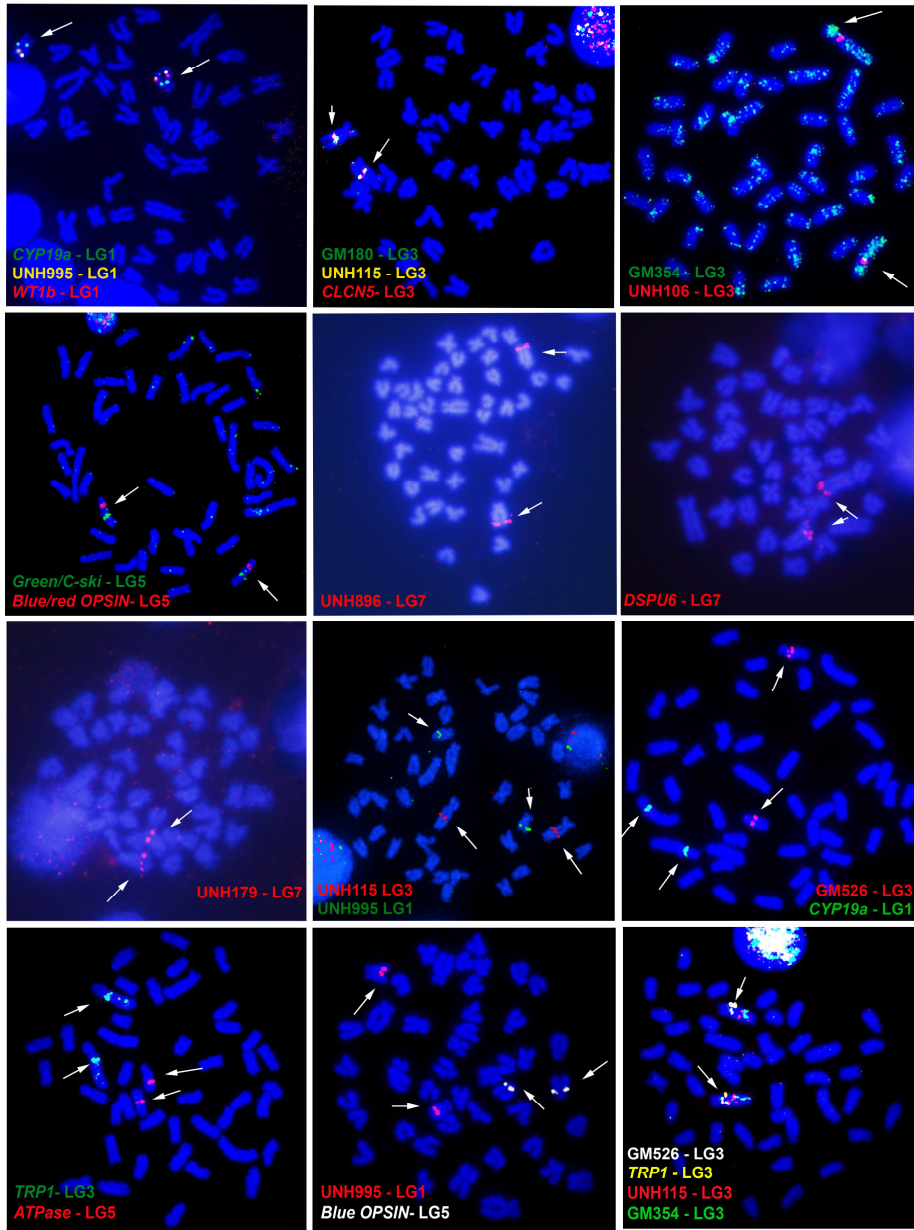
Oreochromis aureus



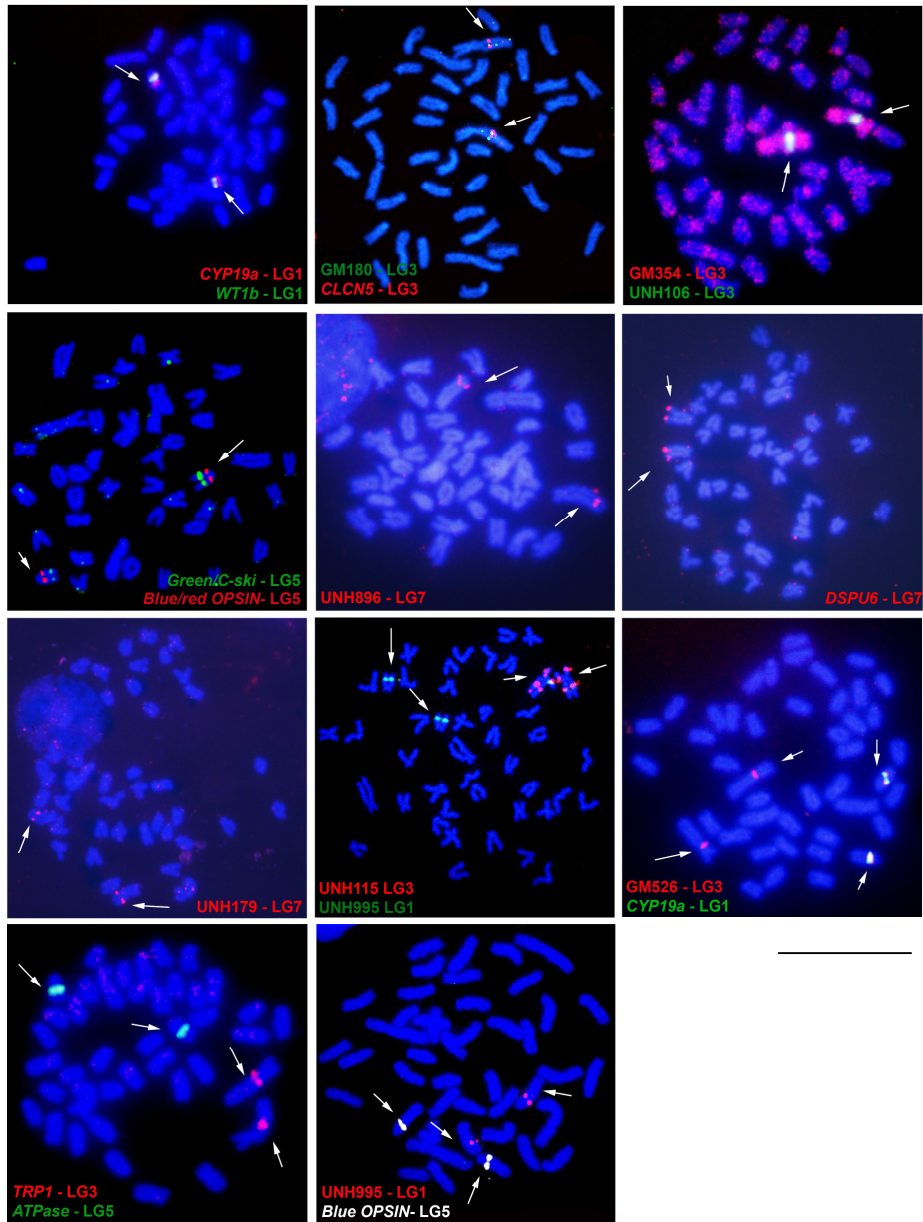
Tilapia mariae



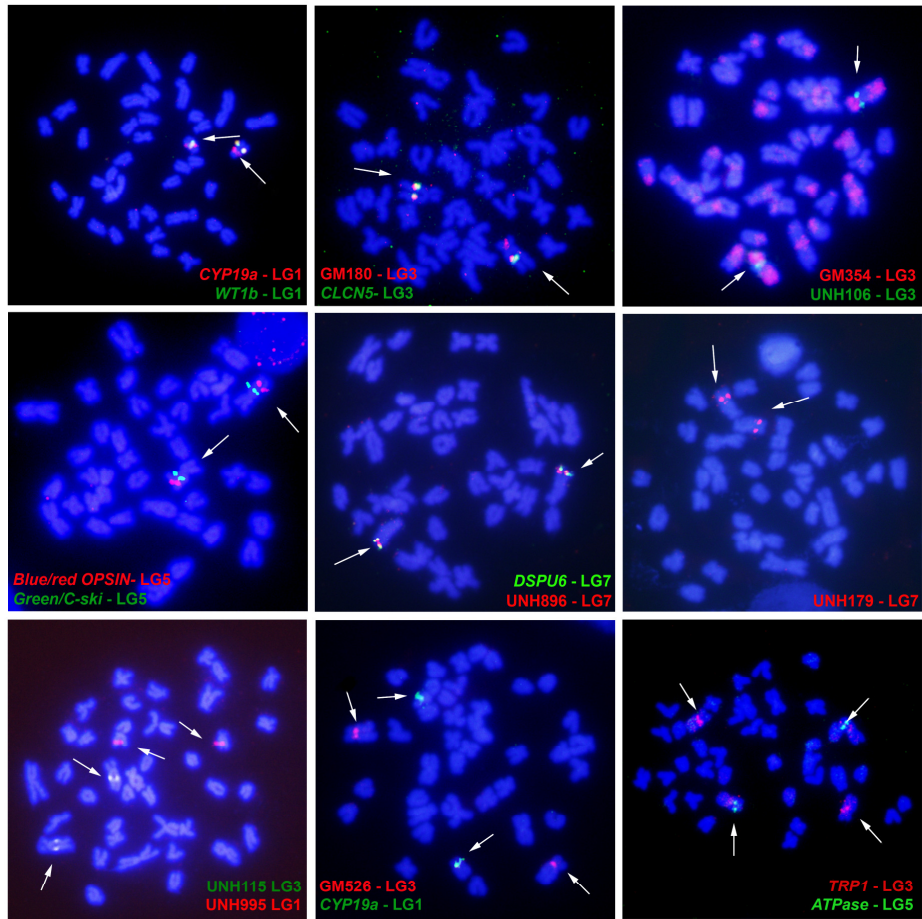
Astatotilapia latifasciata



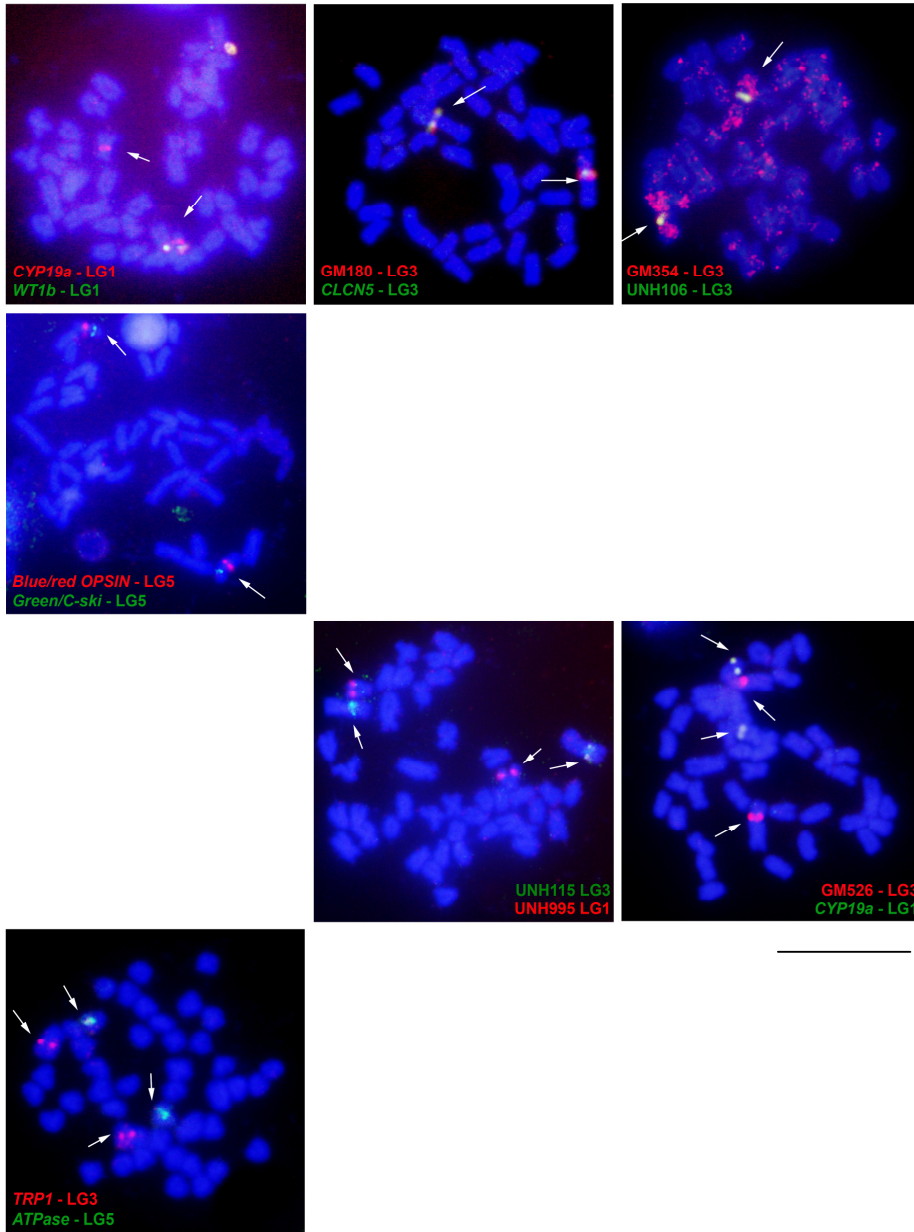
Metriaclima lombardoi



Astatotilapia burtoni



Labeotropheus trewavasae



Hemichromis bimaculatus

