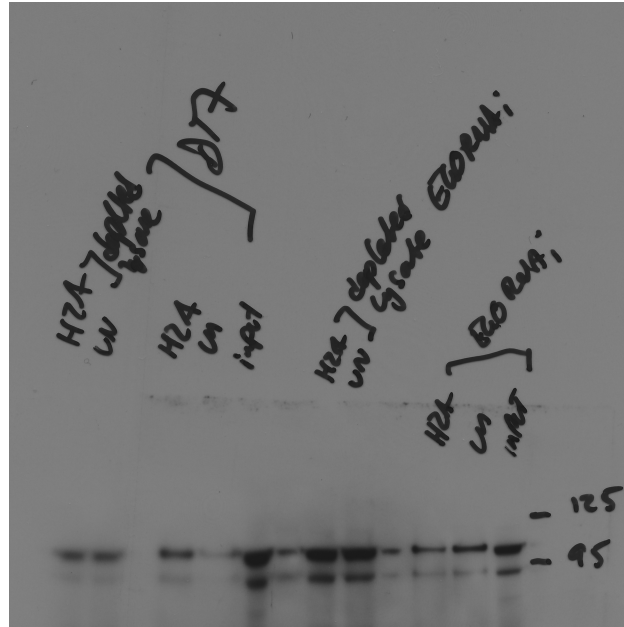


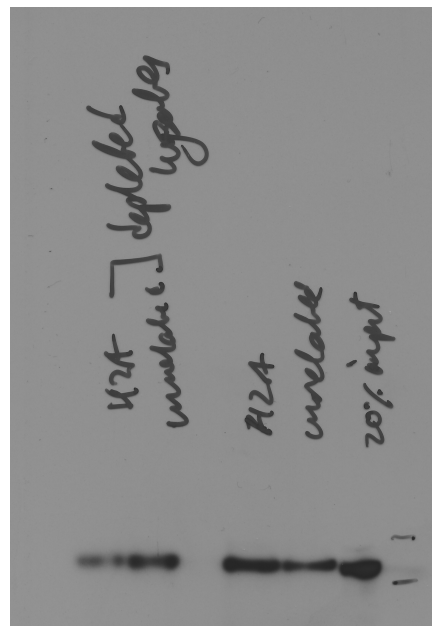
Source Data for Figure 2

Original scan for Figure 2A, anti-CSR-1 Western blot:

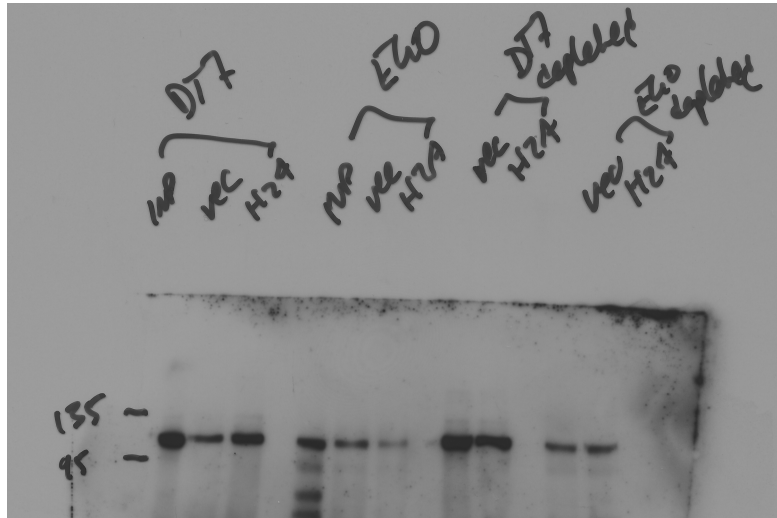


The depleted lysate lanes were not used in the Figure. The orientation has also been reversed in the Figure. The double band is likely to be degradation products.

Repeat of the Pull-Down experiment from 2A above showing enrichment with H2A mimic primers over the unrelated sequence:



Original scan for Figure 2B, anti-CSR-1 Western blot:



The depleted lysates were not included in the Figure.